

BUCKNER

HEAVYLIFT CRANES

Contents	
Sheet	Description
001	Title Page
002	Build Sheet
003	Rod Plan
004	Counterweight Arrangement
005	Hook Blocks
006	Reeving Plan
007	Erection and Takedown 1
008	Erection and Takedown 2
009	Load Chart 1
010	Load Chart 2

PROJECT: LR11000 S2DB 72m

LOCATION: -----
 BUCKNER CONTACT: Dan Ives, PE
 Dani@BucknerHeavyLift.com
 LIFT PLAN BY: Dan Ives, PE
 Dani@BucknerHeavyLift.com

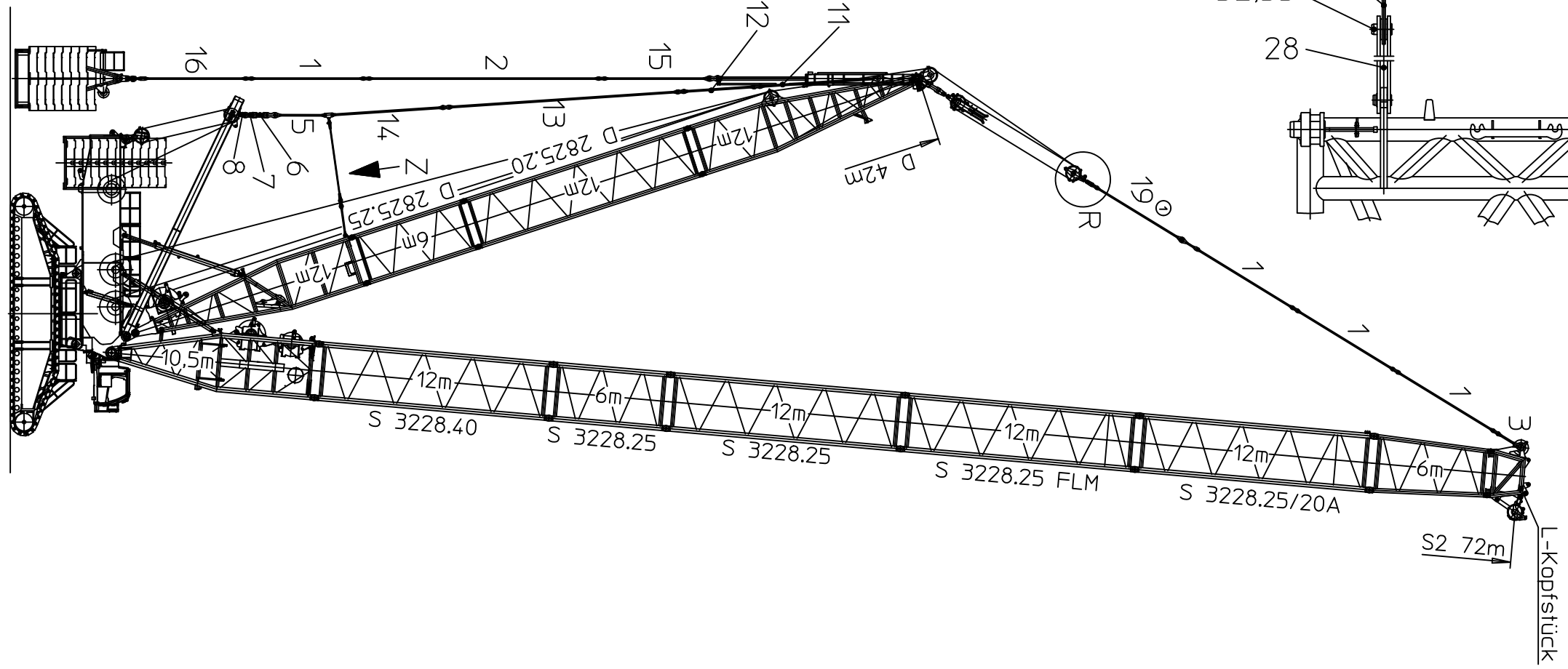
DRAWING NOTES:
 Title Page

FILE: C:\Users\Dan Ives\OneDrive - Buckner HeavyLift
 Cranes\Engineering\Drawings\BHL\Buckner\Build
 Sheets\LR 11000\LR 11000 - S2DB 72m (236').dwg
 CREATED: 01.15.2025 @ 2:31:05 PM
 EDITING TIME: 13h40m FILE SIZE: 10707.34Kb
 PAPER SIZE: ANSI B (17.00 x 11.00 Inches)
 SAVED: 01.17.2025 @ 1:25:31 PM
 PLOTTED: 01.17.2025 @ 1:36:05 PM

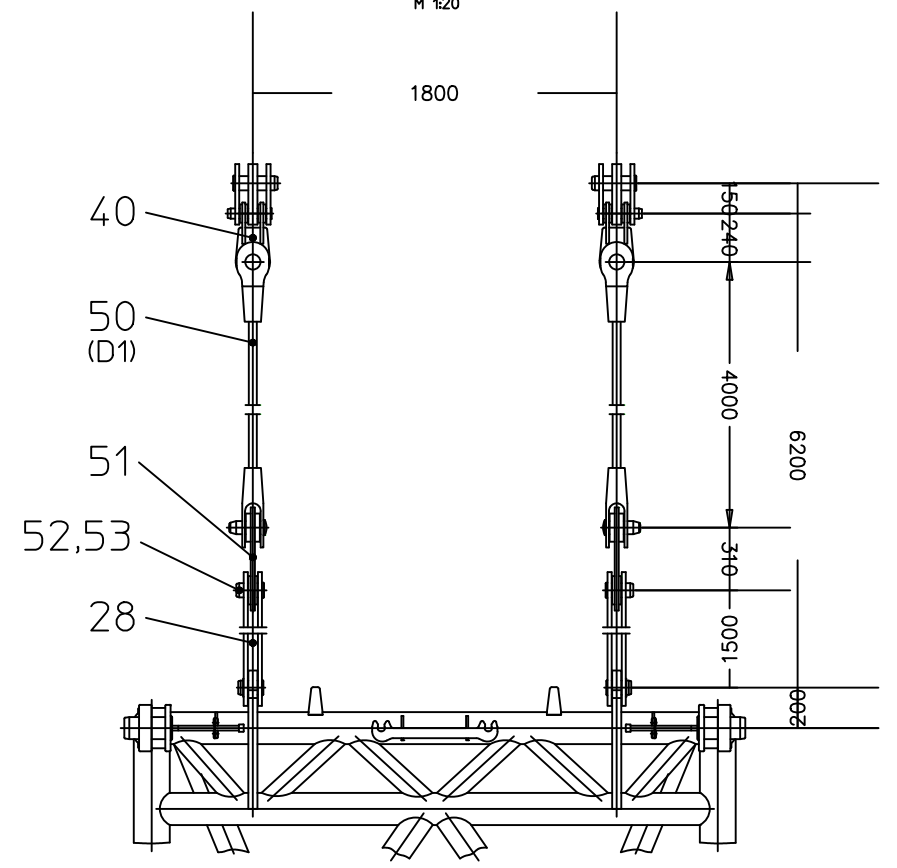
Revisions		
All Sheets Same Revision Level		
Rev.	Date	Description
000	01.17.2025	Preliminary Planning & Initial Layout
001	----	----
002	----	----
003	----	----
004	----	----
005	----	----
006	----	----
007	----	----
008	----	----
009	----	----
010	----	----

SHEET: 001 OF 010





Ansicht Z
View Z
M 1:20



PROJECT:
LR11000 S2DB 72m

LOCATION: -----

BUCKNER CONTACT: Dan Ives, PE
Dani@BucknerHeavylift.com

LIFT PLAN BY: Dan Ives, PE
Dani@BucknerHeavylift.com

DRAWING NOTES:
Build Sheet

FILE: C:\Users\Dan Ives\OneDrive - Buckner Heavylift\Cranes\Engineering\Drawings\BHL\Buckner\Build Sheets\LR 11000\LR 11000 - S2DB 72m (236').dwg

CREATED: 01.15.2025 @ 2:31:05 PM

EDITING TIME: 13h40m FILE SIZE: 10707.34Kb

PAPER SIZE: ANSI B (17.00 x 11.00 Inches)

SAVED: 01.17.2025 @ 1:25:31 PM

PLOTTED: 01.17.2025 @ 1:36:06 PM

Revisions		
All Sheets Same Revision Level		
Rev.	Date	Description
000	01.17.2025	Preliminary Planning & Initial Layout
001	----	----
002	----	----
003	----	----
004	----	----
005	----	----
006	----	----
007	----	----
008	----	----
009	----	----
010	----	----

SHEET: 002 OF 010



Pos. Item	Description		Page
1 967746908	ROD CPL.	6M	
2 967743808	ROD CPL.	12 M	
3 967913408	ROD CPL.	1.35 M	
5 967846208	PULL ROD	3.3M	
6 917368808	MEASURING PLATE	3000 KN	34
7 967846608	PULL TAB WITH SIGN	0.4M	
8 967845508	DRAW SHACKLE	0.7M	
9 967897608	PULL ROD	3.5M	
10 967898308	PULL ROD	8.5 M	
11 968026108	DRAWBAR PRE-ASS	6.0M	
12 968026208	PULL ROD	3.9M	
13 967704008	ROD CPL.	12 M	
14 967733608	ROD CPL.	6 M	
15 968026008	PULL ROD	5.765M	
16 968242208	PULL ROD	6.050 M	
19 968190208	PULL ROD	6.005M	
28 968246608	PULL ROD		
40 968825908	CROSS CONNECTING LINK WELDED		
41 968768408	BRACKET CPL.		
42 97046984	ADDITIONAL GUY ROPE	40MM 5M	
43 97046985	ADDITIONAL GUY ROPE	40MM 7M	
44 968768308	CROSS CONNECTING LINK WELDED		
45 97047031	CHAIN	1507	
46 968766708	CROSS SHACKLE CPL.		
47 968766608	CROSS SHACKLE CPL.		
50 97047687	ADDITIONAL GUY ROPE	40MM 4M	
51 968766908	CONNECTING LINK WELDED		
52 97047686	PIN	75.0X137	
53 10180878	SAFETY PLUG W HINGE-LID	17X100X15,5X80	
67 968786808	PULL ROD		
68 968772408	PULL ROD		
69 968772308	CONNECTING LINK PRE-ASS.		
70 968772208	CONNECTING LINK PRE-ASS.		
72 968902608	ROD CPL.	BALLASTWAGEN5.5M	
73 969609008	ROD CPL.	4.25M D36	
74 968902708	ROD CPL.	BALLASTWAGEN	
1000 98005603	RODS/ PULL RODS LR 11000	F. S2DB/BW/B2	

18.6.2021	LIEBHERR	098260 (LR 11000) RODS/ PULL RODS LR 11000 F. S2DB/BW/B2	968595108 Page: 15
-----------	-----------------	---	-----------------------

PROJECT:
LR11000 S2DB 72m

LOCATION: -----
BUCKNER CONTACT: Dan Ives, PE
Dani@BucknerHeavyLift.com
LIFT PLAN BY: Dan Ives, PE
Dani@BucknerHeavyLift.com

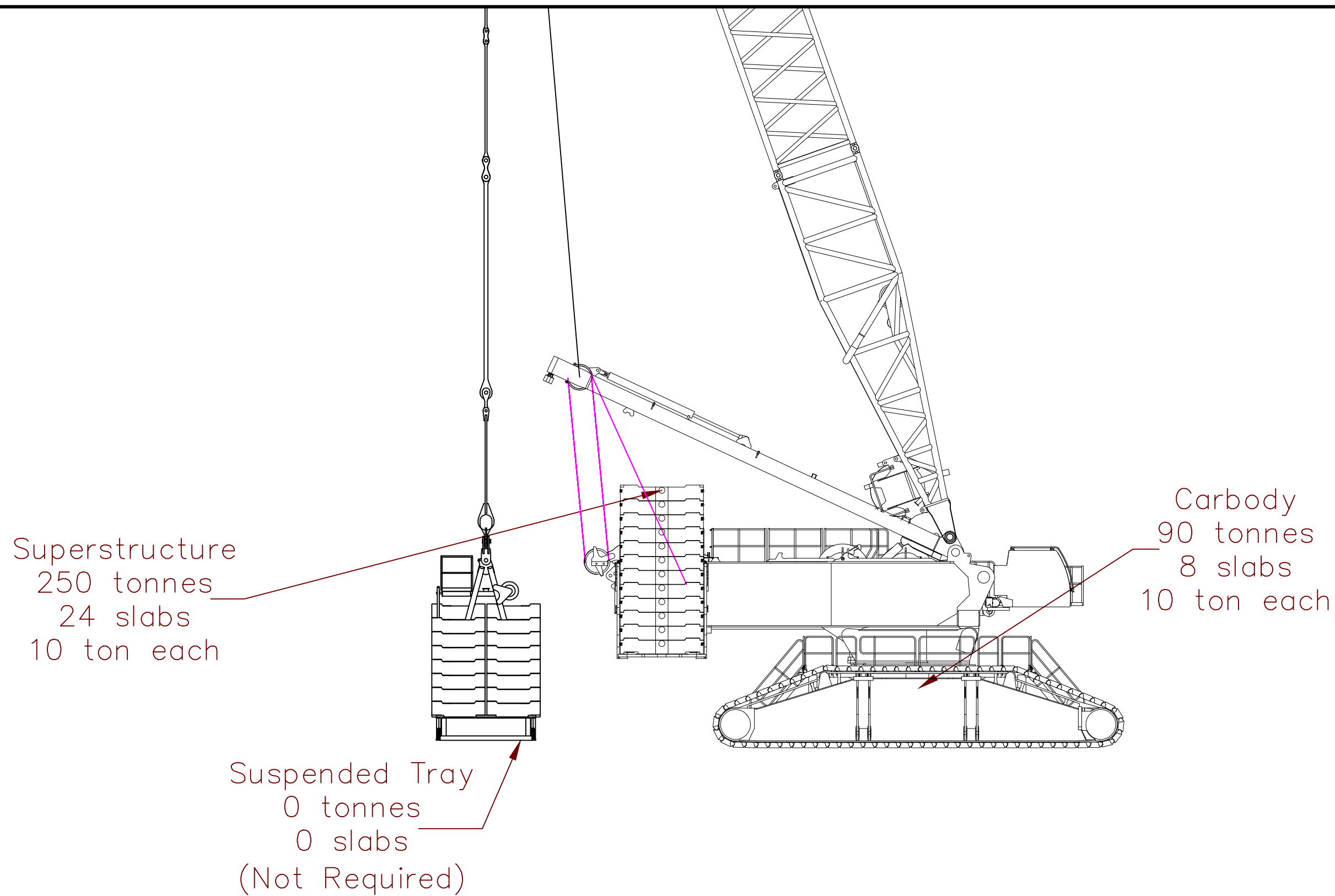
DRAWING NOTES:
Rod Plan

FILE: C:\Users\Dan Ives\OneDrive - Buckner HeavyLift
Cranes\Engineering\Drawings\BHL\Buckner\Build
Sheets\LR 11000\LR 11000 - S2DB 72m (236').dwg
CREATED: 01.15.2025 @ 2:31:05 PM
EDITING TIME: 13h40m FILE SIZE: 10707.34Kb
PAPER SIZE: ANSI B (17.00 x 11.00 Inches)
SAVED: 01.17.2025 @ 1:25:31 PM
PLOTTED: 01.17.2025 @ 1:36:06 PM

Revisions		
All Sheets Same Revision Level		
Rev.	Date	Description
000	01.17.2025	Preliminary Planning & Initial Layout
001	----	----
002	----	----
003	----	----
004	----	----
005	----	----
006	----	----
007	----	----
008	----	----
009	----	----
010	----	----

SHEET: 003 OF 010





PROJECT:
LR11000 S2DB 72m

LOCATION: -----

BUCKNER CONTACT: Dan Ives, PE
Dani@BucknerHeavylift.com

LIFT PLAN BY: Dan Ives, PE
Dani@BucknerHeavylift.com

DRAWING NOTES:
Counterweight Arrangement

FILE: C:\Users\Dan Ives\OneDrive - Buckner Heavylift
Cranes\Engineering\Drawings\BHL\Buckner\Build
Sheets\LR 11000\LR 11000 - S2DB 72m (236').dwg

CREATED: 01.15.2025 @ 2:31:05 PM

EDITING TIME: 13h40m FILE SIZE: 10707.34Kb

PAPER SIZE: ANSI B (17.00 x 11.00 Inches)

SAVED: 01.17.2025 @ 1:25:31 PM

PLOTTED: 01.17.2025 @ 1:36:07 PM

Revisions

All Sheets Same Revision Level

Rev.	Date	Description
000	01.17.2025	Preliminary Planning & Initial Layout
001	----	----
002	----	----
003	----	----
004	----	----
005	----	----
006	----	----
007	----	----
008	----	----
009	----	----
010	----	----

SHEET: 004 OF 010

BUCKNER
HEAVYLIFT CRANES

1.7.1 Version 1

Load		Rope pulleys	Maximum reeving	Net weight without auxiliary weight	
324.8 t	716100 lb	7	15	10.0 t	22050 lb

Double hook block 650 / 325 DMZ

Hook block with installed auxiliary weights		Net weight	
2 auxiliary weights	12.0 t	26460 lb	
4 auxiliary weights	14.0 t	30870 lb	
6 auxiliary weights	16.0 t	35280 lb	
8 auxiliary weights	18.0 t ¹⁾	39690 lb ¹⁾	

Auxiliary weights

1) Maximum permissible net weight of the hook block.

1.7.2 Version 2

Load		Rope pulleys	Maximum reeving	Net weight without auxiliary weight	
324.8 t	716100 lb	7	15	8.9 t	19620 lb

Double hook block 650 / 325 DMZ

Hook block with installed auxiliary weights		Net weight	
2 auxiliary weights	10.9 t	24030 lb	
4 auxiliary weights	12.9 t	28440 lb	
6 auxiliary weights	14.9 t	32850 lb	
8 auxiliary weights	16.9 t ¹⁾	37260 lb ¹⁾	

Auxiliary weights

1) Maximum permissible net weight of the hook block.

1.8 Double hook block 800 / 400 DMZ (SWL 400 t (882000 lb))

Load		Rope pulleys	Maximum reeving	Net weight without auxiliary weight	
400.0 t	882000 lb	9	19	12.0 t	26460 lb

Double hook block 800 / 400 DMZ

LWE/423601-18-02/en

Hook block with installed auxiliary weights		Net weight	
2 auxiliary weights	14.0 t	30870 lb	
4 auxiliary weights	16.0 t	35280 lb	
6 auxiliary weights	18.0 t	39690 lb	
8 auxiliary weights	20.0 t	44100 lb	
10 auxiliary weights	22.0 t ¹⁾	48510 lb ¹⁾	

Auxiliary weights

1) Maximum permissible net weight of the hook block.

1.9 Double hook block 1000 / 500 DMZ (SWL 500 t (1102500 lb))

Load		Rope pulleys	Maximum reeving	Net weight without auxiliary weight	
479.0 t	1056100 lb	11	23	14.2 t	31310 lb

Double hook block 1000 / 500 DMZ

Hook block with installed auxiliary weights		Net weight	
2 auxiliary weights	16.2 t	35720 lb	
4 auxiliary weights	18.2 t	40130 lb	
6 auxiliary weights	20.2 t	44540 lb	
8 auxiliary weights	22.2 t	48950 lb	
10 auxiliary weights	24.2 t ¹⁾	53360 lb ¹⁾	

Auxiliary weights

1) Maximum permissible net weight of the hook block.

1.10 Double hook block 1000 / 550 DMZ (SWL 325 t (716630 lb))

Load		Rope pulleys	Maximum reeving	Net weight without auxiliary weight	
324.8 t	716100 lb	7	15	19.1 t	42120 lb

Double hook block 1000 / 550 DMZ

1.11 Double hook block 1000 / 550 DMZ (SWL 550 t (1212750 lb))

Load		Rope pulleys	Maximum reeving	Net weight without auxiliary weight	
550.0 t	1212750 lb	13	27	21.5 t	47410 lb

Double hook block 1000 / 550 DMZ

LWE/423601-18-02/en

PROJECT:

LR11000 S2DB 72m

LOCATION: -----

BUCKNER CONTACT: Dan Ives, PE
Dani@BucknerHeavylift.com

LIFT PLAN BY: Dan Ives, PE

Dani@BucknerHeavylift.com

DRAWING NOTES:

Hook Blocks

FILE: C:\Users\Dan Ives\OneDrive - Buckner Heavylift
Cranes\Engineering\Drawings\BHL\Buckner\Build
Sheets\LR 11000\LR 11000 - S2DB 72m (236").dwg

CREATED: 01.15.2025 @ 2:31:05 PM

EDITING TIME: 13h40m FILE SIZE: 10707.34Kb

PAPER SIZE: ANSI B (17.00 x 11.00 Inches)

SAVED: 01.17.2025 @ 1:25:31 PM

PLOTTED: 01.17.2025 @ 1:36:07 PM

Revisions

All Sheets Same Revision Level

Rev.	Date	Description
000	01.17.2025	Preliminary Planning & Initial Layout
001	----	----
002	----	----
003	----	----
004	----	----
005	----	----
006	----	----
007	----	----
008	----	----
009	----	----
010	----	----

SHEET: 005 OF 010

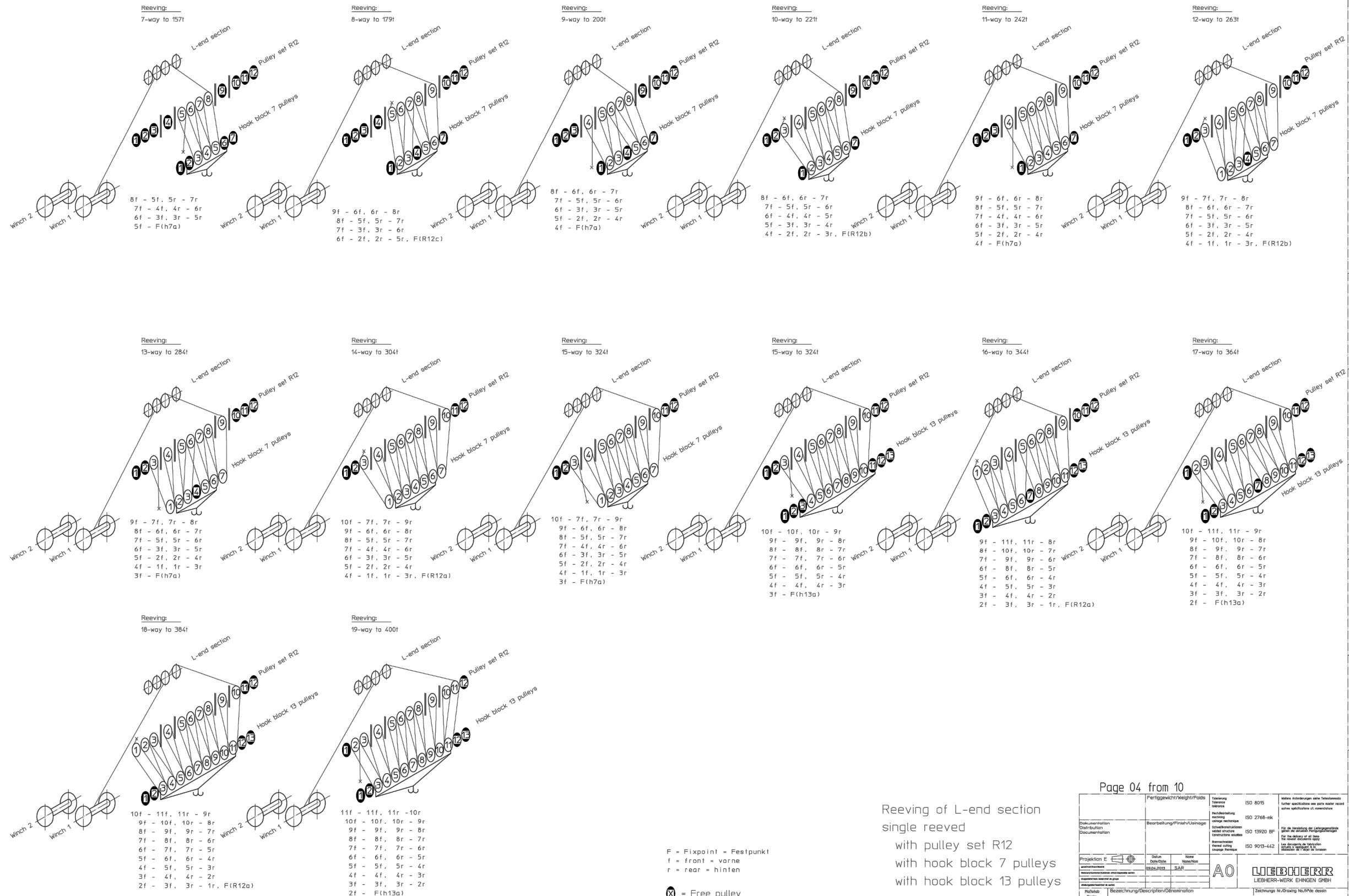
BUCKNER
HEAVYLIFT CRANES

PROJECT:
LR11000 S2DB 72m

LOCATION: -----
BUCKNER CONTACT: Dan Ives, PE
Dani@BucknerHeavylift.com

LIFT PLAN BY: Dan Ives, PE
Dani@BucknerHeavylift.com

DRAWING NOTES:
Reeving Plan



F = Fixpoint = Festpunkt
f = front = varne
r = rear = hinten
X = Free pulley

Reeving of L-end section
single reeved
with pulley set R12
with hook block 7 pulleys
with hook block 13 pulleys

Page 04 from 10

Partigewicht/Weight/Parts		Technische Zeichnung ISO 8015	Andere Anforderungen siehe Technisches weiter specifications see parts master sheet and other specifications of connection
Dokumentation Description Documentation		Herstellung ISO 2768-rsk	ISO 15920 BF
Projektion E		Scale 1:100	1668-722.00.007-005
REEVING PLAN L-HEAD SINGLE		9800 7815	

FILE: C:\Users\Dan Ives\OneDrive - Buckner Heavylift
Cranes\Engineering\Drawings\BHL\Buckner\Build
Sheets\LR 11000\LR 11000 - S2DB 72m (236').dwg

CREATED: 01.15.2025 @ 2:31:05 PM
EDITING TIME: 13h40m FILE SIZE: 10707.34Kb
PAPER SIZE: ANSI B (17.00 x 11.00 Inches)
SAVED: 01.17.2025 @ 1:25:31 PM
PLOTTED: 01.17.2025 @ 1:36:07 PM

Revisions		
All Sheets Same Revision Level		
Rev.	Date	Description
000	01.17.2025	Preliminary Planning & Initial Layout
001	----	----
002	----	----
003	----	----
004	----	----
005	----	----
006	----	----
007	----	----
008	----	----
009	----	----
010	----	----

SHEET: 006 OF 010

S2DB – operation, turntable ballast 250t / central ballast 90t
Derrick: to S2-60 36m; from S2-66 42m
L-end section with 1 pulley set R 12

aat_235_034_00101_00_000

Page: 1 of 4

System: S 3228.40/25/20/16
 D 2825.25/20

On crawlers 9.6m x 9.2m x 1.5m
 Wind: maximum 9m/s
 Terrain incline: maximum 0.3°

S2DB DR 12m DBR 12m	Permissible weight of hook block [t] on main boom										
	for derrick ballast [t] for derrick radius (DR) 12m / derrick ballast radius (DBR) 12m										
	0	50	100	150	200	250	300	350	400	450	
42	•	•	•	•	•	•	•	•	•	•	
48	•	•	•	•	•	•	•	•	•	•	
54	•	•	•	•	•	•	•	•	•	•	
60	37	•	•	•	•	•	•	•	•	•	
66	27	39	•	•	•	•	•	•	•	•	
72	17	28	39	•	•	•	•	•	•	•	
78	8.8	18	28	38	•	•	•	•	•	•	
84	1.1	10	19	28	38	•	•	•	•	•	
90	-	3.8	12	21	29	38	•	•	•	•	
96	-	-	4.7	12	20	29	37	•	•	•	
102	-	-	-	6.2	13	21	29	36	•	•	
108	-	-	-	-	6.9	14	21	28	35	40	
114	-	-	-	-	-	7.6	14	21	27	32	
120	-	-	-	-	-	-	7.2	13	20	24	
126	-	-	-	-	-	-	1.1	7.2	13	17	
132	-	-	-	-	-	-	-	1.3	7.1	11	
138	-	-	-	-	-	-	-	-	1.1	4.7	
144	-	-	-	-	-	-	-	-	-	-	
150	-	-	-	-	-	-	-	-	-	-	
156	-	-	-	-	-	-	-	-	-	-	

- Hook block weight to 40t permissible
- Erection not permissible

LWE/23550-16-02/en

S2DB – operation, turntable ballast 250t / central ballast 90t
Derrick: to S2-60 36m; from S2-66 42m
L-end section with 1 pulley set

aat_235_034_00101_00_000

Page: 2 of 4

System: S 3228.40/25/20/16
 D 2825.25/20

On crawlers 9.6m x 9.2m x 1.5m
 Wind: maximum 9m/s
 Terrain incline: maximum 0.3°

S2DB DR 15m DBR 15m	Permissible weight of hook block [t] on main boom										
	for derrick ballast [t] for derrick radius (DR) 15m / derrick ballast radius (DBR) 15m										
	0	50	100	150	200	250	300	350	400	450	
42	•	•	•	•	•	•	•	•	•	•	
48	•	•	•	•	•	•	•	•	•	•	
54	•	•	•	•	•	•	•	•	•	•	
60	39	•	•	•	•	•	•	•	•	•	
66	28	•	•	•	•	•	•	•	•	•	
72	18	31	•	•	•	•	•	•	•	•	
78	10	21	33	•	•	•	•	•	•	•	
84	2.2	13	24	35	•	•	•	•	•	•	
90	-	6.4	16	26	37	•	•	•	•	•	
96	-	-	8.6	18	27	37	•	•	•	•	
102	-	-	2.2	11	20	29	38	•	•	•	
108	-	-	-	4.5	13	21	29	38	•	•	
114	-	-	-	-	6.6	14	22	30	38	•	
120	-	-	-	-	-	7.4	14	22	30	35	
126	-	-	-	-	-	1.3	8.5	15	23	28	
132	-	-	-	-	-	-	2.5	9.4	16	21	
138	-	-	-	-	-	-	-	3.3	9.9	14	
144	-	-	-	-	-	-	-	-	3.8	8.3	
150	-	-	-	-	-	-	-	-	-	2.3	
156	-	-	-	-	-	-	-	-	-	-	

- Hook block weight to 40t permissible
- Erection not permissible

LWE/23550-16-02/en

PROJECT:
 LR11000 S2DB 72m

LOCATION: -----
 BUCKNER CONTACT: Dan Ives, PE
 Dani@BucknerHeavyLift.com
 LIFT PLAN BY: Dan Ives, PE
 Dani@BucknerHeavyLift.com

DRAWING NOTES:
 Erection and Takedown 1

FILE: C:\Users\Dan Ives\OneDrive – Buckner HeavyLift
 Cranes\Engineering\Drawings\BHL\Buckner\Build
 Sheets\LR 11000\LR 11000 – S2DB 72m (236').dwg
 CREATED: 01.15.2025 @ 2:31:05 PM
 EDITING TIME: 13h40m FILE SIZE: 10707.34Kb
 PAPER SIZE: ANSI B (17.00 x 11.00 Inches)
 SAVED: 01.17.2025 @ 1:25:31 PM
 PLOTTED: 01.17.2025 @ 1:36:08 PM

Revisions		
All Sheets Same Revision Level		
Rev.	Date	Description
000	01.17.2025	Preliminary Planning & Initial Layout
001	----	----
002	----	----
003	----	----
004	----	----
005	----	----
006	----	----
007	----	----
008	----	----
009	----	----
010	----	----

SHEET: 007 OF 010



S2DB – operation, turntable ballast 250t / central ballast 90t
Derrick: to S2-60 36m; from S2-66 42m
L-end section with 1 pulley set R 12

aat_235_034_00101_00_000

Page: 3 of 4

System: S 3228.40/25/20/16
 D 2825.25/20

On crawlers 9.6m x 9.2m x 1.5m
 Wind: maximum 9m/s
 Terrain incline: maximum 0.3°

S2DB DR 18m DBR 18m	Permissible weight of hook block [t] on main boom										
	for derrick ballast [t]										
	for derrick radius (DR) 18m / derrick ballast radius (DBR) 18m										
	0	50	100	150	200	250	300	350	400	450	
42	•	•	•	•	•	•	•	•	•	•	•
48	•	•	•	•	•	•	•	•	•	•	•
54	•	•	•	•	•	•	•	•	•	•	•
60	40	•	•	•	•	•	•	•	•	•	•
66	30	•	•	•	•	•	•	•	•	•	•
72	20	34	•	•	•	•	•	•	•	•	•
78	11	24	38	•	•	•	•	•	•	•	•
84	3.3	15	28	•	•	•	•	•	•	•	•
90	-	9	20	32	•	•	•	•	•	•	•
96	-	1.5	12	23	34	•	•	•	•	•	•
102	-	-	5.9	16	26	37	•	•	•	•	•
108	-	-	-	9.3	19	28	38	•	•	•	•
114	-	-	-	3	12	21	30	40	•	•	•
120	-	-	-	-	5.2	13	22	31	40	•	•
126	-	-	-	-	-	7.6	15	24	32	35	•
132	-	-	-	-	-	1.6	9.6	17	25	27	•
138	-	-	-	-	-	-	3.4	11	18	21	•
144	-	-	-	-	-	-	-	5	12	14	•
150	-	-	-	-	-	-	-	-	6	8.9	•
156	-	-	-	-	-	-	-	-	-	1.9	•

- Hook block weight to 40t permissible
- Erection not permissible

LWE/23550-16-02/en

S2DB – operation, turntable ballast 250t / central ballast 90t
Derrick: to S2-60 36m; from S2-66 42m
L-end section with 1 pulley set R 12

aat_235_034_00101_00_000

Page: 4 of 4

System: S 3228.40/25/20/16
 D 2825.25/20

On crawlers 9.6m x 9.2m x 1.5m
 Wind: maximum 9m/s
 Terrain incline: maximum 0.3°

S2DB DR 20m DBR 20m	Permissible weight of hook block [t] on main boom										
	for derrick ballast [t]										
	for derrick radius (DR) 20m / derrick ballast radius (DBR) 20m										
	0	50	100	150	200	250	300	350	400	450	
42	-	-	-	-	-	-	-	-	-	-	-
48	-	-	-	-	-	-	-	-	-	-	-
54	-	-	-	-	-	-	-	-	-	-	-
60	-	-	-	-	-	-	-	-	-	-	-
66	31	•	•	•	•	•	•	•	•	•	•
72	21	37	•	•	•	•	•	•	•	•	•
78	12	26	•	•	•	•	•	•	•	•	•
84	4	17	31	•	•	•	•	•	•	•	•
90	-	10	23	36	•	•	•	•	•	•	•
96	-	3.1	15	27	39	•	•	•	•	•	•
102	-	-	8.4	19	30	•	•	•	•	•	•
108	-	-	1.8	12	23	33	•	•	•	•	•
114	-	-	-	6.1	16	26	36	•	•	•	•
120	-	-	-	-	8.8	18	27	37	•	•	•
126	-	-	-	-	2.7	11	20	29	36	37	•
132	-	-	-	-	-	5.6	14	22	29	30	•
138	-	-	-	-	-	-	7.9	16	22	23	•
144	-	-	-	-	-	-	2	9.9	16	16	•
150	-	-	-	-	-	-	-	3.8	10	10	•
156	-	-	-	-	-	-	-	-	3	3	•

- Hook block weight to 40t permissible
- Erection not permissible

LWE/23550-16-02/en

PROJECT:
 LR11000 S2DB 72m

LOCATION: -----
 BUCKNER CONTACT: Dan Ives, PE
 Dani@BucknerHeavyLift.com
 LIFT PLAN BY: Dan Ives, PE
 Dani@BucknerHeavyLift.com

DRAWING NOTES:
 Erection and Takedown 2

FILE: C:\Users\Dan Ives\OneDrive – Buckner HeavyLift
 Cranes\Engineering\Drawings\BHL\Buckner\Build
 Sheets\LR 11000\LR 11000 – S2DB 72m (236").dwg
 CREATED: 01.15.2025 @ 2:31:05 PM
 EDITING TIME: 13h40m FILE SIZE: 10707.34Kb
 PAPER SIZE: ANSI B (17.00 x 11.00 Inches)
 SAVED: 01.17.2025 @ 1:25:31 PM
 PLOTTED: 01.17.2025 @ 1:36:09 PM

Revisions		
All Sheets Same Revision Level		
Rev.	Date	Description
000	01.17.2025	Preliminary Planning & Initial Layout
001	----	----
002	----	----
003	----	----
004	----	----
005	----	----
006	----	----
007	----	----
008	----	----
009	----	----
010	----	----

SHEET: 008 OF 010



LR 11000 -- 098260

T235.034.00106

EN 13000

S2DB: S2-236ft D-138ft B

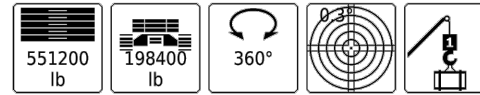


LR 11000 -- 098260

T235.034.00106

EN 13000

S2DB: S2-236ft D-138ft B



PROJECT: LR11000 S2DB 72m

LOCATION: ---
BUCKNER CONTACT: Dan Ives, PE
LIFT PLAN BY: Dan Ives, PE

DRAWING NOTES: Load Chart 1

Table with columns for height (ft) and load (x1000lb) for various crane configurations. Includes a summary row at the bottom with values like 0.0, 110.2, 220.5, etc.

Table with columns for height (ft) and load (x1000lb) for various crane configurations. Includes a summary row at the bottom with values like 220.5, 330.7, 440.9, etc.

FILE: C:\Users\Dan Ives\OneDrive - Buckner Heavylift...
CREATED: 01.15.2025 @ 2:31:05 PM
PAPER SIZE: ANSI B (17.00 x 11.00 Inches)

Revisions table with columns: Rev., Date, Description. Shows revision 000: Preliminary Planning & Initial Layout.

SHEET: 009 OF 010



LR 11000 -- 098260

T235.034.00106

EN 13000

S2DB: S2-236ft D-138ft B



LR 11000 -- 098260

T235.034.00106

EN 13000

S2DB: S2-236ft D-138ft B



PROJECT: LR11000 S2DB 72m

LOCATION: ---
BUCKNER CONTACT: Dan Ives, PE
LIFT PLAN BY: Dan Ives, PE

DRAWING NOTES: Load Chart 2

Table with columns for height (ft) and load capacity (x1000lb) for various heights from 38 to 210 ft.

Table with columns for height (ft) and load capacity (x1000lb) for various heights from 38 to 210 ft.

FILE: C:\Users\Dan Ives\OneDrive - Buckner Heavylift...
CREATED: 01.15.2025 @ 2:31:05 PM
PAPER SIZE: ANSI B (17.00 x 11.00 Inches)

Revisions table with columns for Rev., Date, and Description. Includes revision 000: Preliminary Planning & Initial Layout.

SHEET: 010 OF 010

