

GENERAL

Form Type INITIAL - Assembly / Annual

Crane Number CR1205

Crane Manufacturer Liebherr

Crane Model Number LR11000

Serial Number 098200

Machine Type Crawler

Boom Type Lattice Boom

Configuration Main Boom + Luffing Jib

Job Number 241012: CR1205 (2024-12-16)

Main Boom Length 36 METERS

Jib Length 42 METERS

Upper CW 250 TONS

Central ballast 90 TONS

Parts of Line 7

Hour Meter Reading 7369



Track Hour Meter Reading 394



Assembly / Disassembly / Annual / Inspection Form

Dec 10, 2024

Inspector's Name

Wayne Hackfeld

Inspector's Signature

Customer's Name

Jeff Bolyer

Customer's Email

jbolyer@deemstructural.com

Customer's Signature

Date of Inspection

Dec 5, 2024



Condition Inspection

Buckner or its representatives shall have the right at any time, without notice, during the Term to enter upon the premises or place where the Equipment is located and shall be given free access and afforded all necessary facilities for the purpose of inspecting the hours and condition of the Equipment. Such inspection shall not relieve Customer of any obligation under the Agreement and shall not constitute any waiver by Buckner of any obligations of Customer under the Agreement. Customer may not rely on such inspection in any way.

OSHA

- 1926.1412(c):
Post-assembly.

- 1926.1412(c)(1):
Upon completion of assembly, the equipment must be inspected by a qualified person to assure that it is configured in accordance with manufacturer equipment criteria.

- 1926.1412(b)
Repaired/adjusted equipment.

- 1926.1412(b)(1)
Equipment that has had a repair or adjustment that relates to safe operation (such as: A repair or adjustment to a safety device or operator aid, or to a critical part of a control system, power plant, braking system, load-sustaining structural components, load hook, or in-use operating mechanism), must be inspected by a qualified person after such a repair or adjustment has been completed, prior to initial use. The inspection must meet all of the following requirements:

- 1926.1412(f)
Annual/comprehensive.

- 1926.1412(f)(1)

At least every 12 months the equipment must be inspected by a qualified person in accordance with paragraph (d) of this section (each shift) except that the corrective action set forth in paragraphs (f)(4), (f)(5), and (f)(6) of this section must apply in place of the corrective action required by paragraphs (d)(2) and (d)(3) of this section.



INTRODUCTION / SAFETY

Q1: Has the Daily PTP been completed and submitted for this task?

YES

Q2: Has the Crane been Locked Out and Tagged Out?

NO

Not required no LOTO

Photo 1



Q3: Has a swing radius barricade been erected around the crane to keep non-essential personnel out of the crane swing area during the course of the inspection?

YES

Q4: Is the Crane set up properly, level, and on firm ground away from personnel, powerlines, traffic, or anything that could cause a potential safety hazard while completing this inspection?

YES

Q5: Are the ground conditions around the Crane properly supported, free of ground settling under and around outriggers/stabilizers and supporting foundations, and free of groundwater accumulations or similar conditions?

YES



HISTORICAL DATA

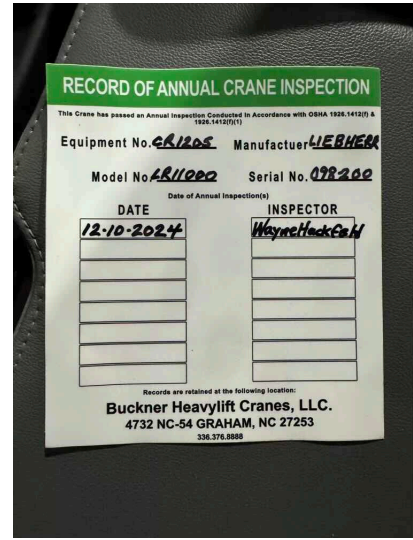
Q1: Are the Monthly Inspection Records present and up to date?	YES
Q2: Are the Maintenance Records present and up to date?	YES
Q3: Are the Modification Records present and up to date?	YES
Q4: Are the Load Test Records present and/or readily available for review?	YES

Q5: Is the latest / current Annual Crane Inspection Record in the Cab of the Crane and/or readily available for review?

YES

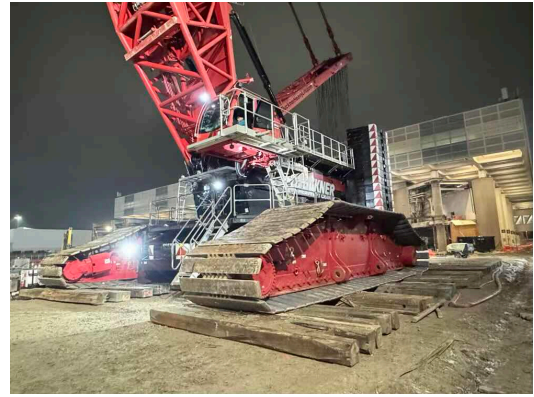
Expires 12-10-2025

Photo 1

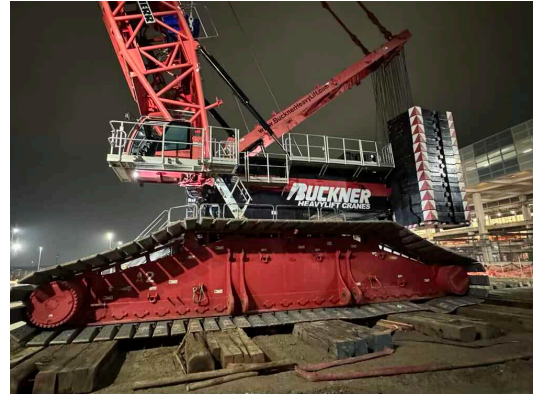


GENERAL CONDITION

Q1: Take a Picture of Left Front (LF) Corner of the Complete Machine



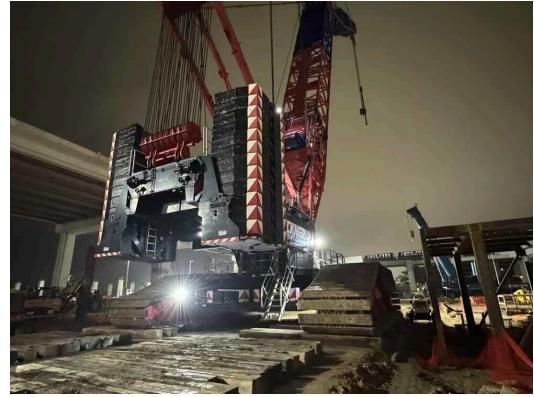
Q2: Take a Picture of the Left-Hand Side of the Complete Machine



Q3: Take a Picture of the Left Rear (LR)
Corner of the Complete Machine



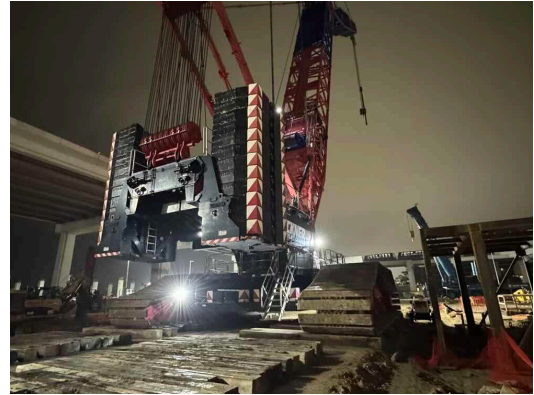
Q4: Take a Picture of the Right Rear (RR)
Corner of the Machine



Q5: Take a Picture of the Right-Hand Side of the Complete Machine



Q6: Take a Picture of the Right Front (RF) Corner of the Machine



Q7: What is the current Paint Condition and Corrosion Control?

Touch-up / Rust

Not good, many scratches, scrapes, rust, miss matching paint, faded paint

Photo 1

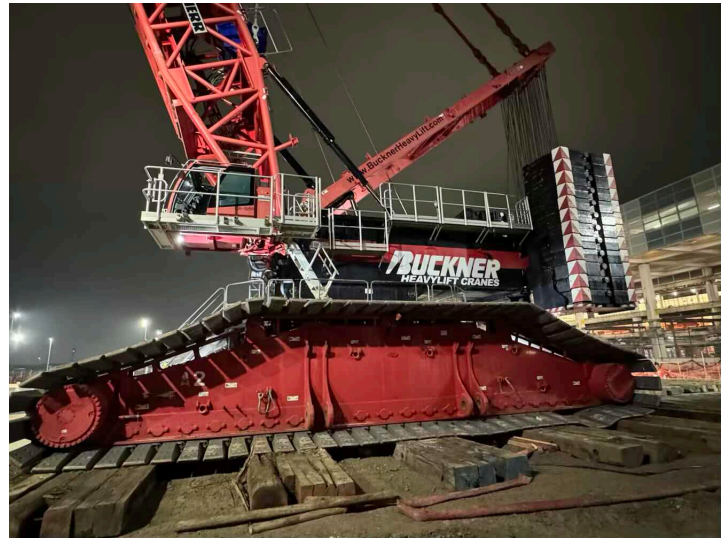


Photo 2

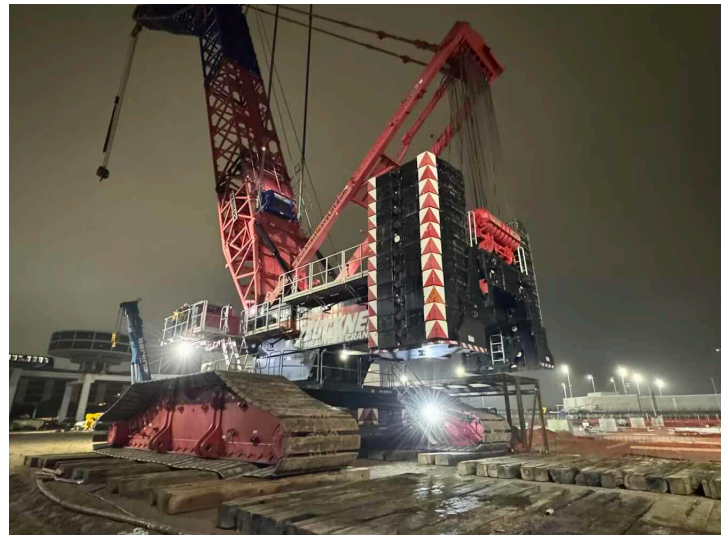


Photo 3



Photo 4

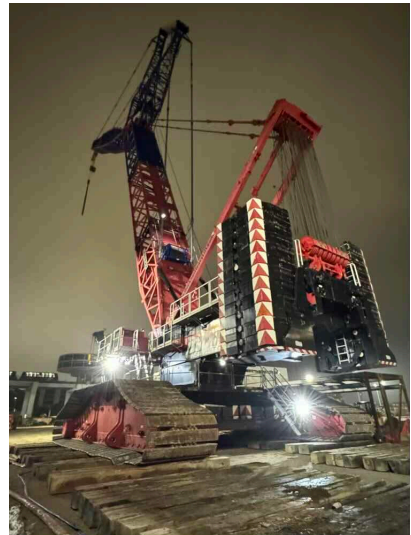
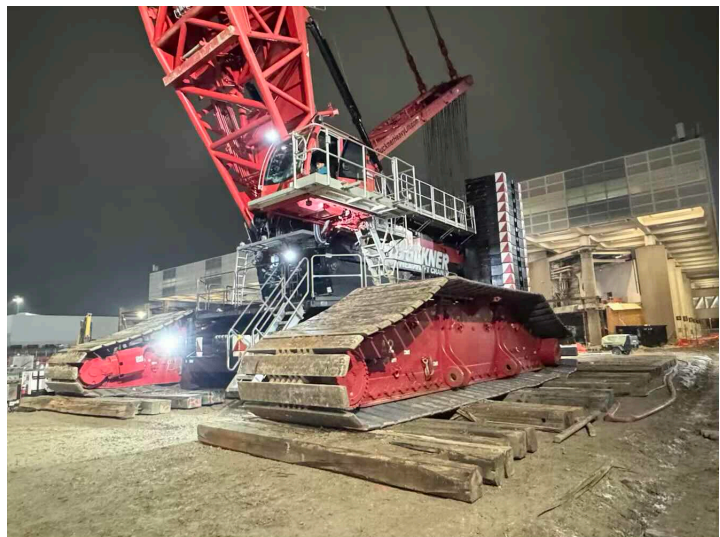


Photo 5



Q8: Is the Sheet Metal all present, securely fastened, and in good condition?

NO

Latches missing battery cover, cover missing by W4 area by belts

Photo 1



Photo 2



Q9: Are all Guards and Covers properly in place and secured around or over items that reciprocate, rotate, or otherwise move?

YES

Q10: Are Buckner Heavylift Company Decals present on the machine and in good condition?

YES

Q11: Are the BHL Equipment Numbers on the machine and in good condition?

YES

Q12: Are all the originally supplied and required Safety /

YES



Assembly / Disassembly / Annual / Inspection Form

Dec 10, 2024

Warning Decals and Labels present in a good and legible condition?

Q13: Is the Crane Conex in good shape, organized, and have Buckner Heavylift Decals installed on it?

NO

Outside is rough can see old logos in paint. Organization not good.

Photo 1

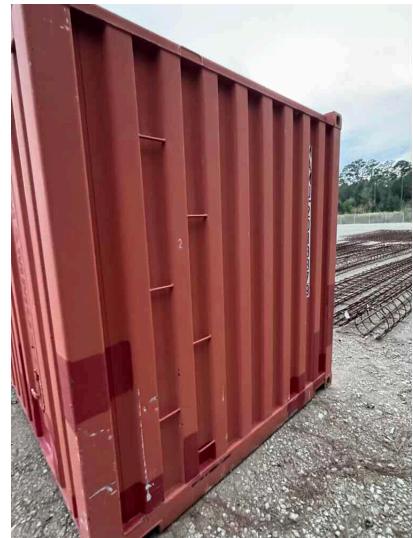


Photo 2

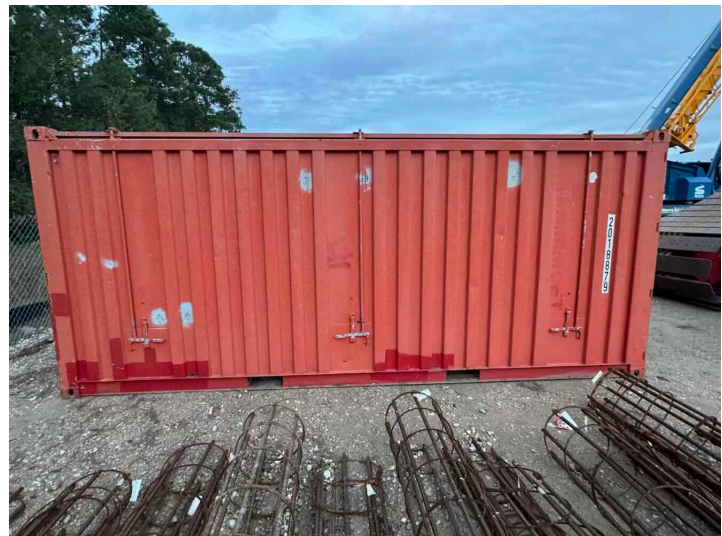


Photo 3



Photo 4



Photo 5



Photo 6

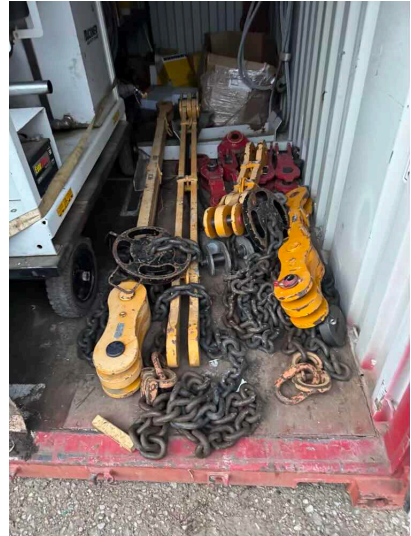


Photo 7

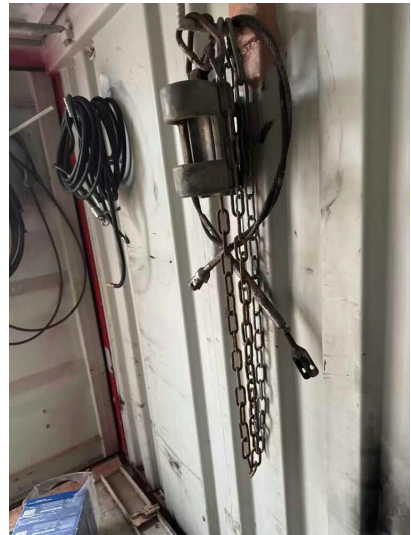


Photo 8

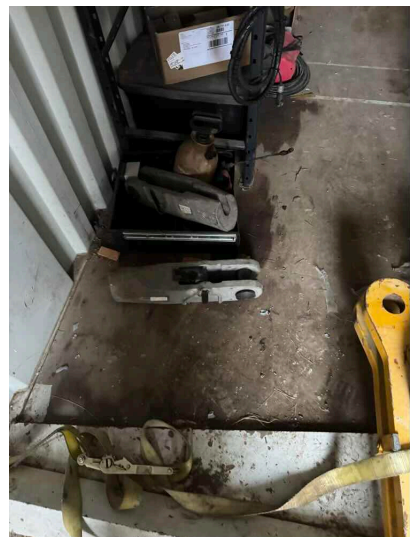
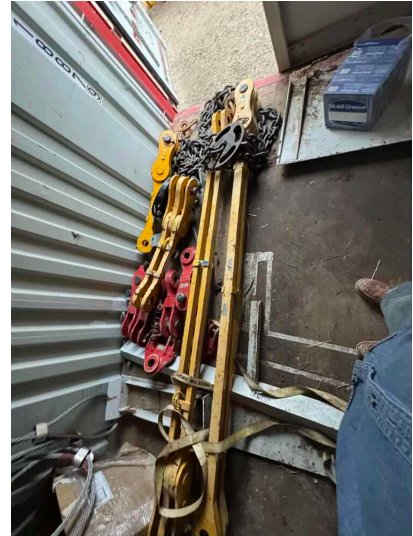


Photo 9



Q14: If a Crane Conex is not Present, Is the Crane Box in good shape, organized and have Buckner Heavylift Decals installed on it?

N/A

Q15: Are there spare Fuel Filters present in the Crane
Conex / Box and are they sealed and in good condition?

YES

Present.

Photo 1



Q16: Are there spare Engine Belts present in the Crane
Conex / Box and are they in the original packaging and in
good condition?

NO

Not in container.

Photo 1



Q17: Is the Hydraulic Pin Puller well maintained, in a safe operating condition, free of hydraulic leaks, chaffed, and damaged hoses, with a fully functioning actuator?

YES

Good condition full oil, full hydraulic.

Photo 1

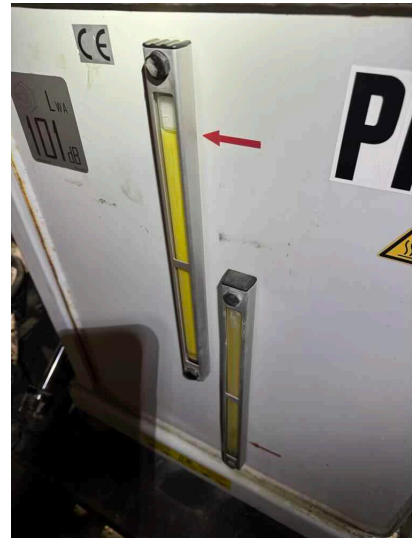


Photo 2



Photo 3



Photo 4



Photo 5



Q18: Are the Mechanical Auxiliary Supports (Frog Legs) in

N/A



Assembly / Disassembly / Annual / Inspection Form

Dec 10, 2024

a safe operating condition, free of cracks, complete with screw handle, outrigger pads, and fasteners that are free of apparent damage that could cause failure while in use?

OUTRIGGERS

Q1: Are the Outriggers free of deformation, cracks, significantly corroded members, loose fasteners, cracked welds, and significant wear?	YES
Q2: Are the Beams free of deformation, cracks, significantly corroded members, loose fasteners, cracked welds, and significant wear?	YES
Q3: Are the Hydraulic Cylinders free of leak down (drifting), fluid leaks, cylinder rod scores/nicks and dents, and cylinder barrel for significant dents?	YES
Q4: Are the Floats / Outrigger Pads free of excessive wear, cracks, and damaged and missing components?	YES
Q5: Are the Hydraulic Hoses / Tubing / Fittings and/or their connections free of leaks?	YES
Q6: Are the Holding Valves free of sticking, leaks, and valve housing cracks?	YES
Q7: Are the Position Locks free of distortion, cracks, and significant wear?	N/A
Q8: Are all the originally supplied and required Safety / Warning Decals and Labels present in a good and legible condition?	YES



CAR BODY / CRAWLER ASSEMBLIES

- | | |
|---|-----|
| Q1: Is the Undercarriage and Undercarriage Components clean, well maintained, and free of contamination by excessive mud, dirt, rock, water, or other foreign matter? | YES |
| Q2: Are the Car Body accessible surfaces clean and free of slip, trip, and fall hazards? | YES |
| Q3: Are the Car Body warning and information labels present, legible, and durable? | YES |
| Q4: Are the Car Body Controls clearly labeled and legible? | YES |

Q5: Are the Car Body / Side Frames and Side Frame Mounting Points free of deformation, cracks, significantly corroded members, loose fasteners, cracked welds, and significant wear?

YES

No deficiencies observed during inspection.

Photo 1

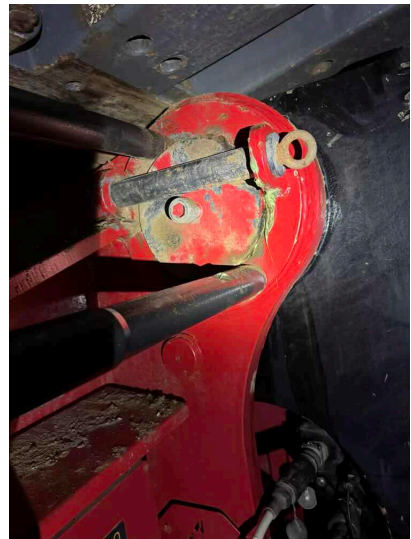


Photo 2

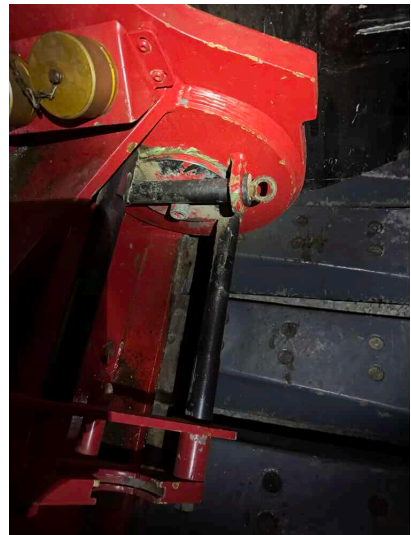


Photo 3

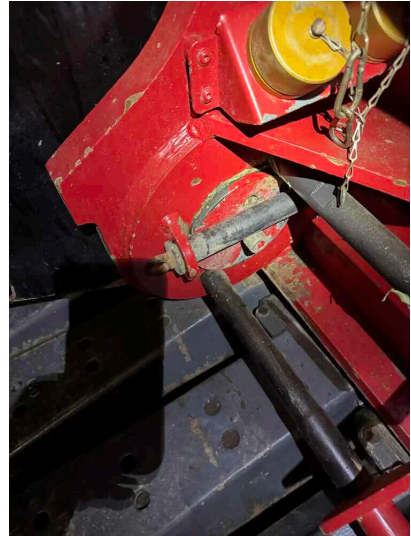


Photo 4

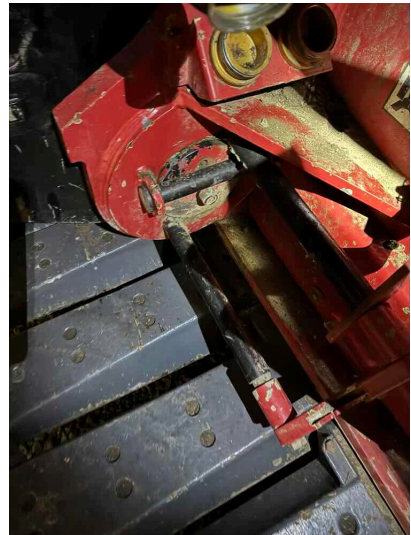


Photo 5



Photo 6

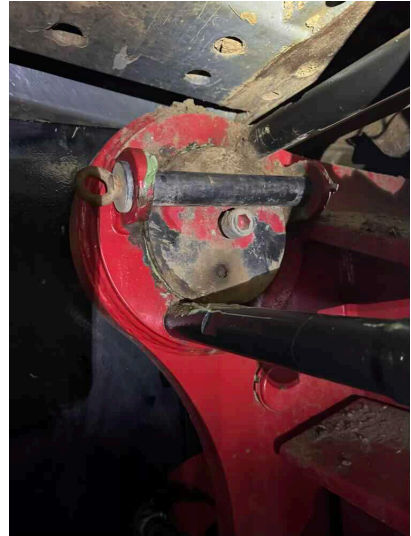


Photo 7

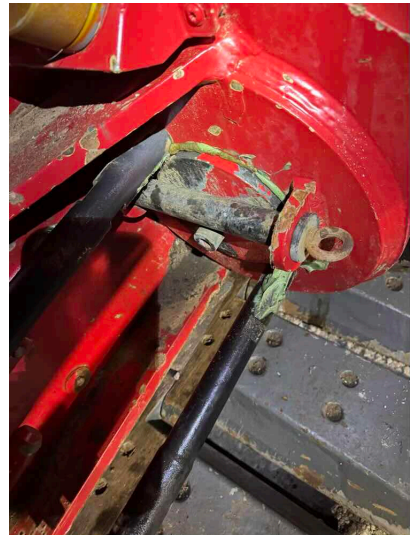
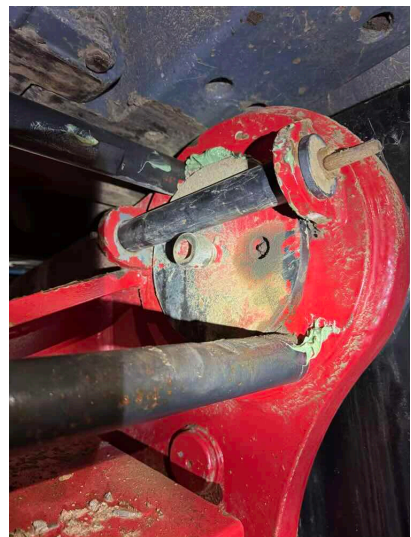


Photo 8



Q6: Are the Track Frame Lifting Lugs (Dog Bone) free of

YES



Assembly / Disassembly / Annual / Inspection Form

Dec 10, 2024

deformation, cracks, significantly corroded members, loose fasteners, cracked welds, evidence of heating, or significant wear?

Q7: Are all four (4) Track Chain Supports present and in good working order free of any deficiencies?

YES

All 8 supports good condition.

Photo 1

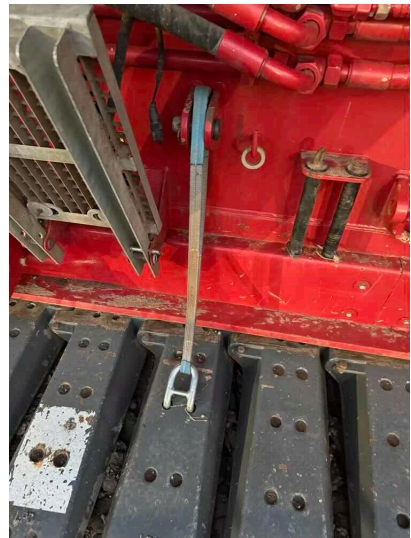


Photo 2

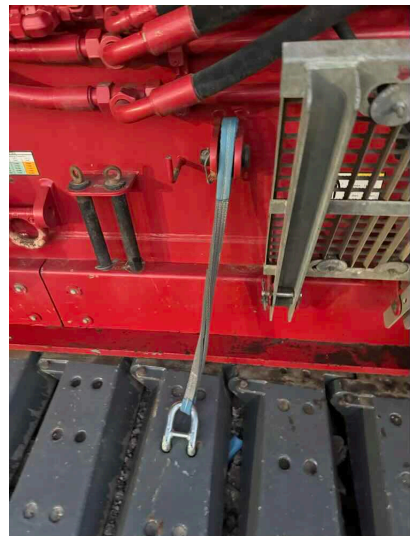


Photo 3

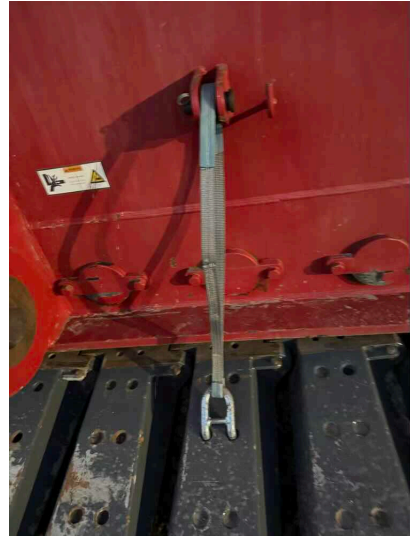


Photo 4

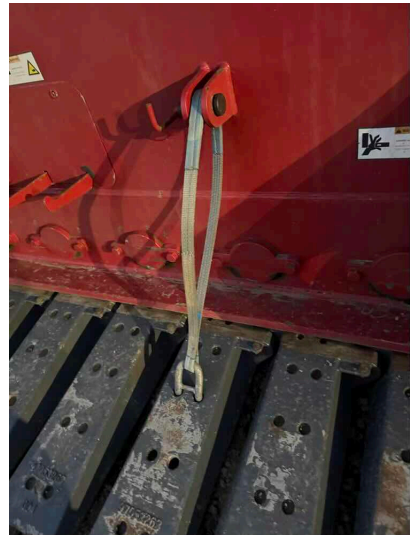


Photo 5

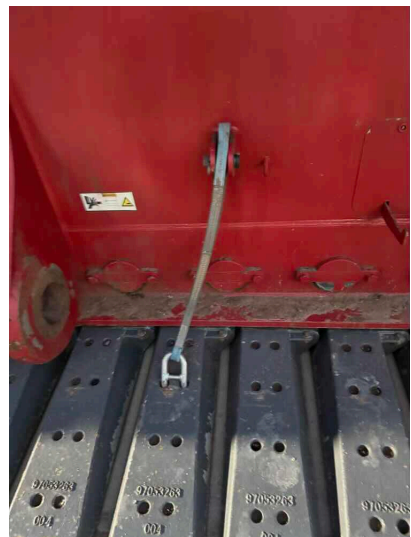


Photo 6

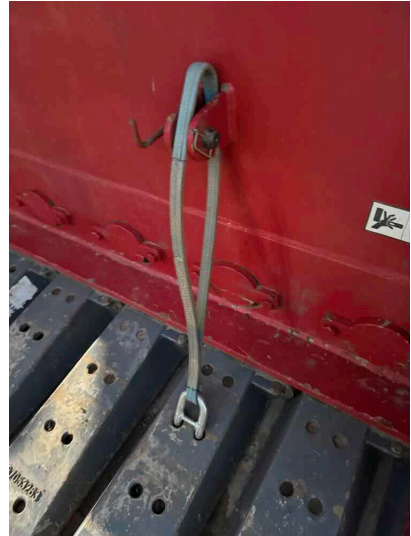


Photo 7

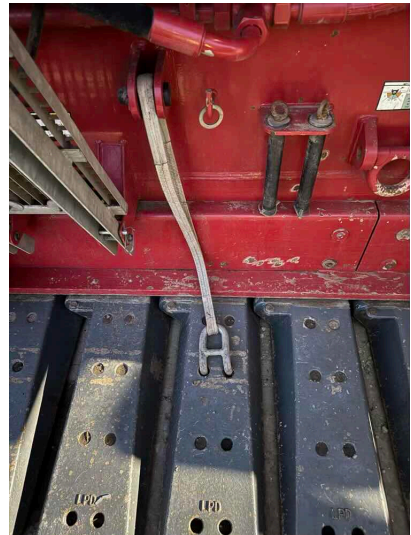


Photo 8



Q8: Are the Drive Sprockets, Drive Chain, and Drive Tumblers free of excessive wear?

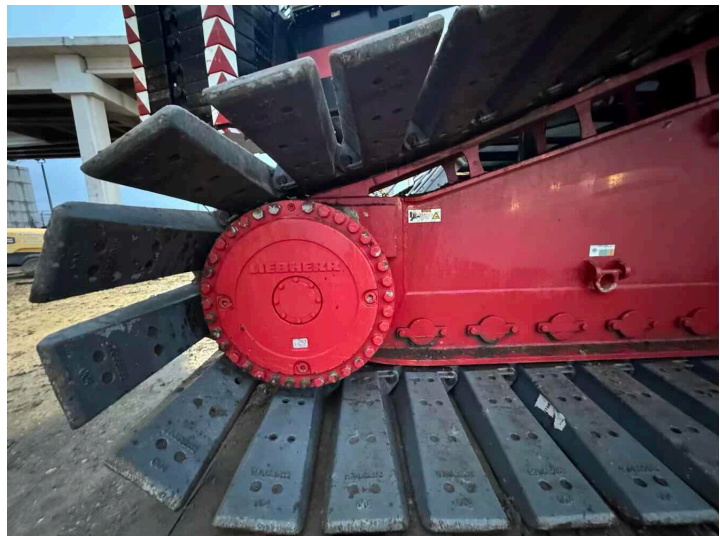
YES

No deficiencies observed during inspection.

Photo 1



Photo 2



Q9: Are the Drive Tumbler Lugs free of excessive wear?

NO

Have considerable wear.

Photo 1

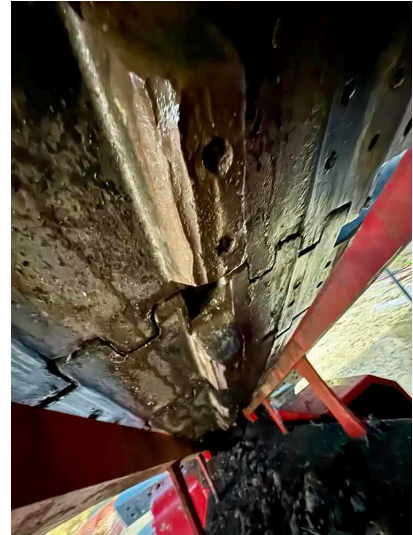


Photo 2

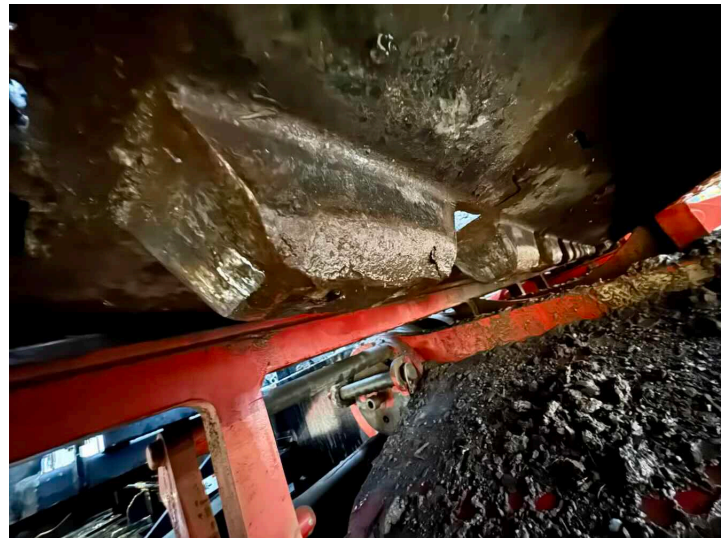


Photo 3



Photo 4



Photo 5

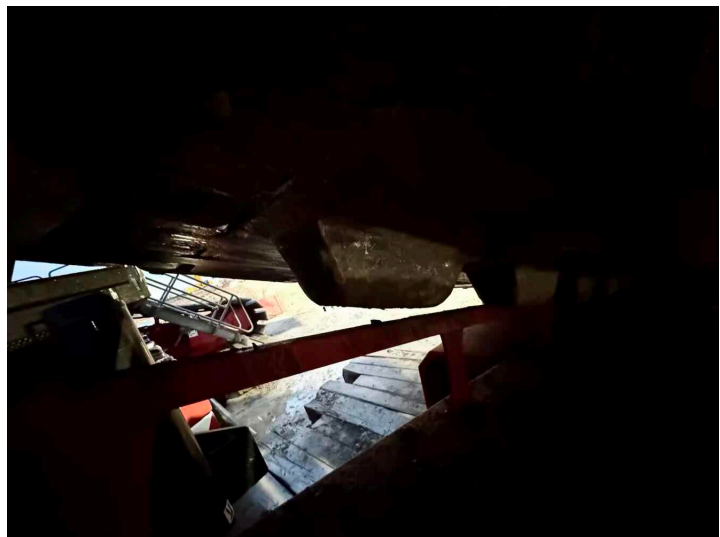


Photo 6



Photo 7



Photo 8

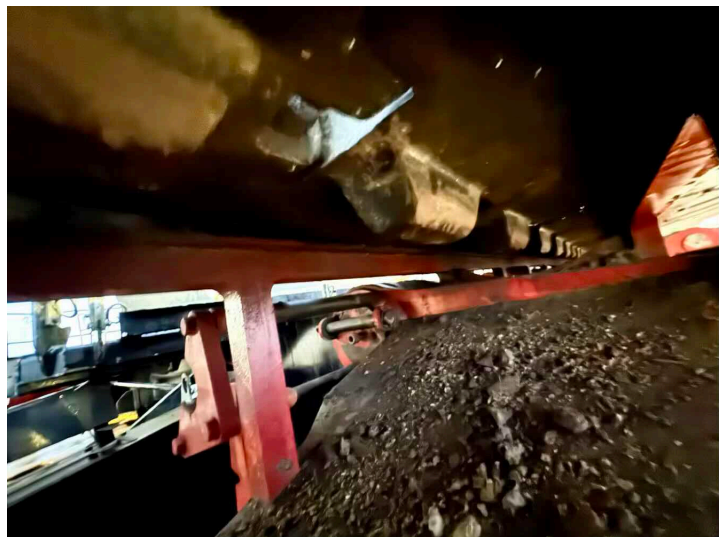


Photo 9



Q10: Are the Sprockets, Idlers, and Rollers free of excessive wear?

YES

No deficiencies observed during inspection.

Photo 1

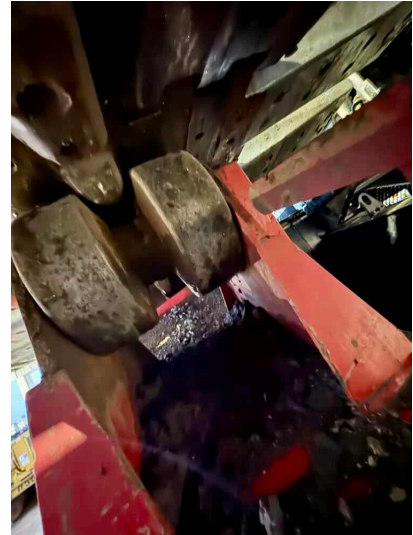


Photo 2



Photo 3

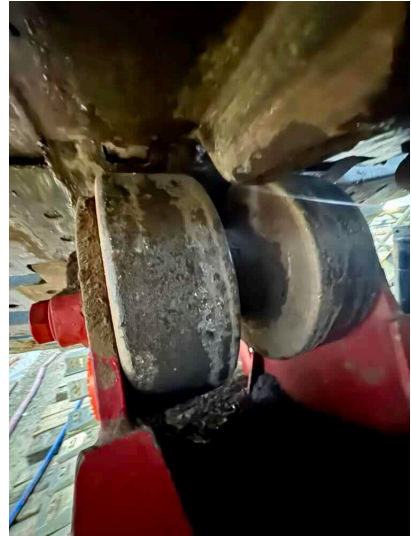


Photo 4



Q11: Are the Drag Bars free of deformation, cracked welds, and significant wear?

YES

No deficiencies observed during inspection.

Photo 1

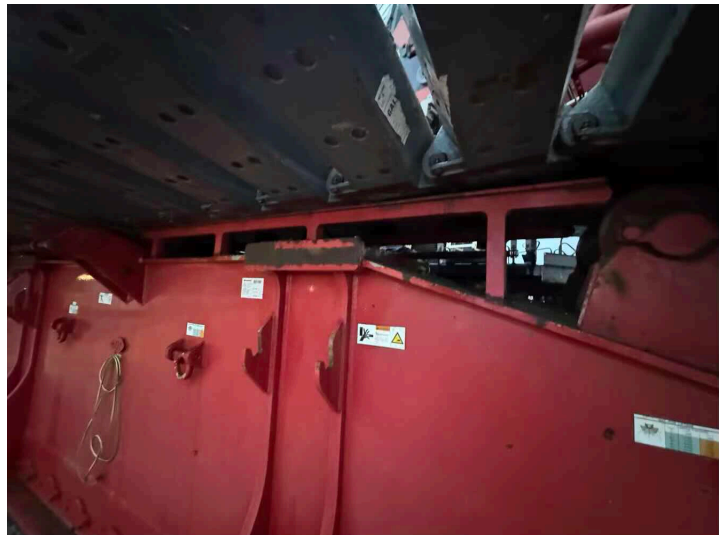


Photo 2

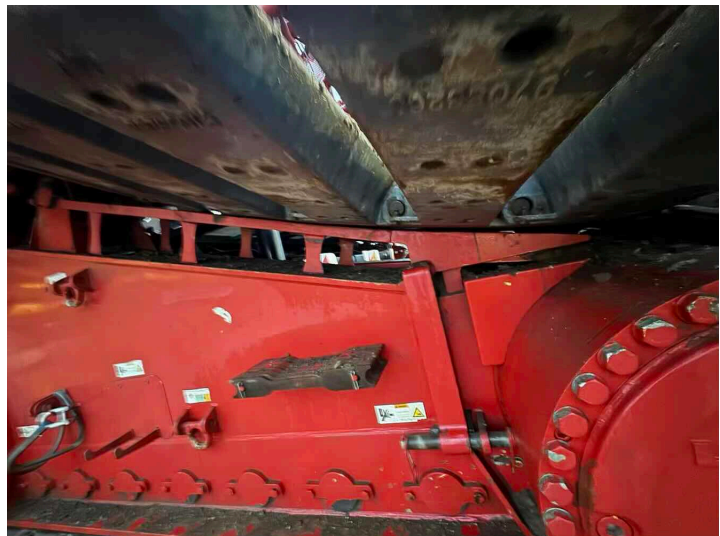


Photo 3



Photo 4



Photo 5

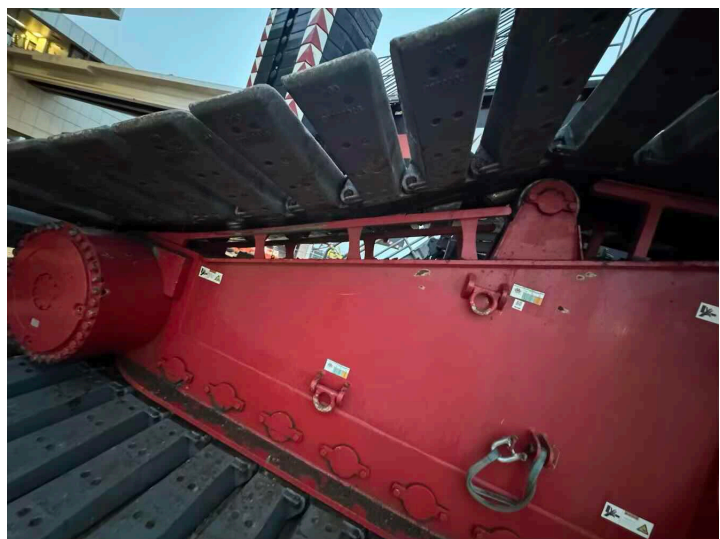


Photo 6



Photo 7



Photo 8

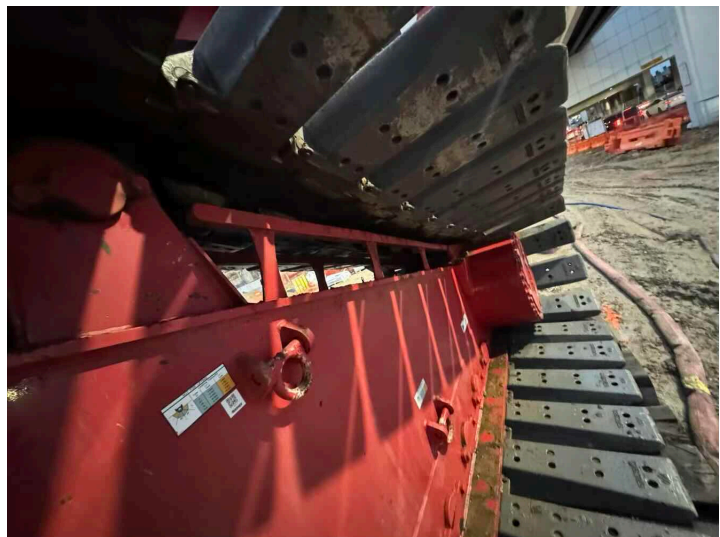


Photo 9



Photo 10



Q12: Are the Track Pads, Pins, and Retainers free of deformation, cracks, significantly corroded members, loose fasteners, cracked welds, and significant wear?

YES

Q13: Count the number of trackpads currently in the A track belt and record your number below.

72

Q14: Count the number of trackpads currently in the B track belt and record your number below.

72

Q15: Is the Track Adjustment within manufacturer specifications?

NO

Tracks are quite loose.

Photo 1

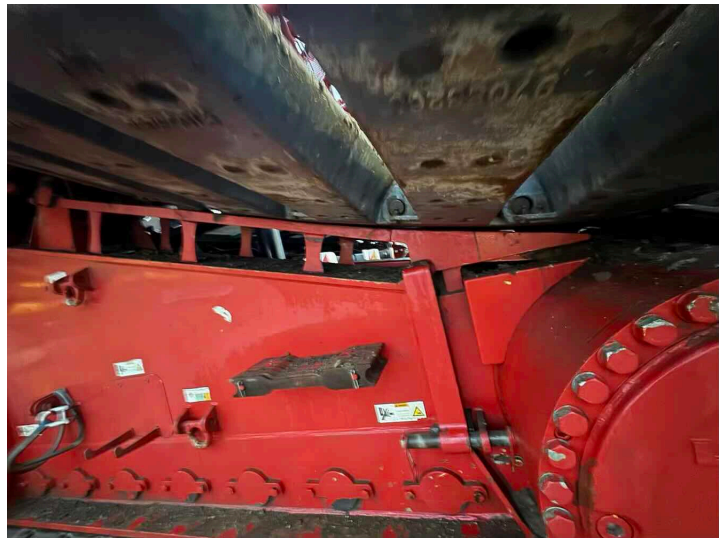


Photo 2

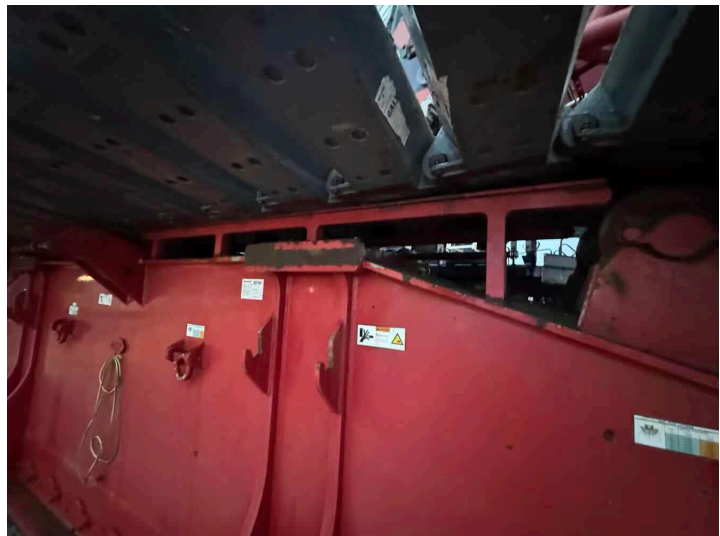


Photo 3



Photo 4

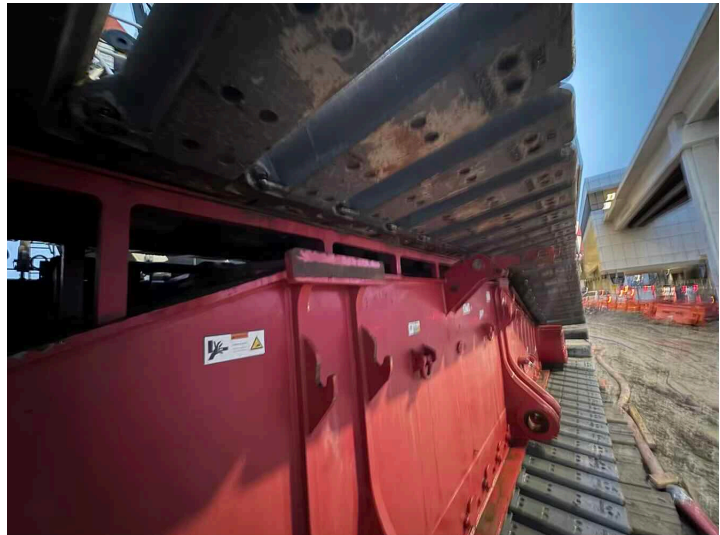


Photo 5

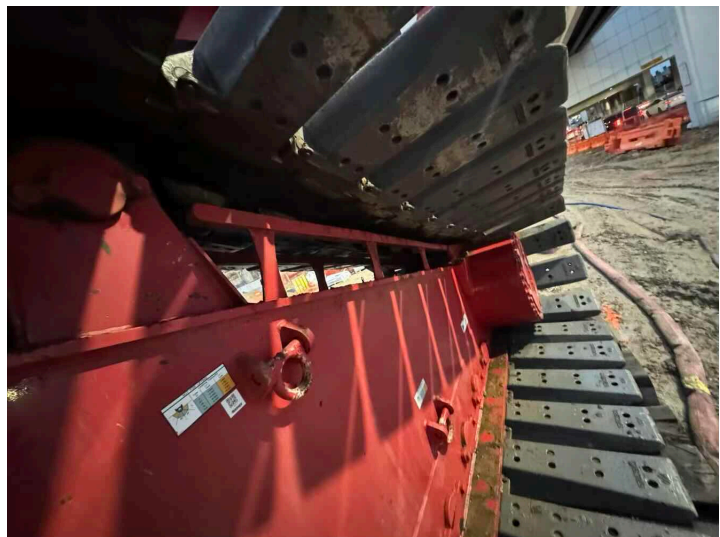


Photo 6

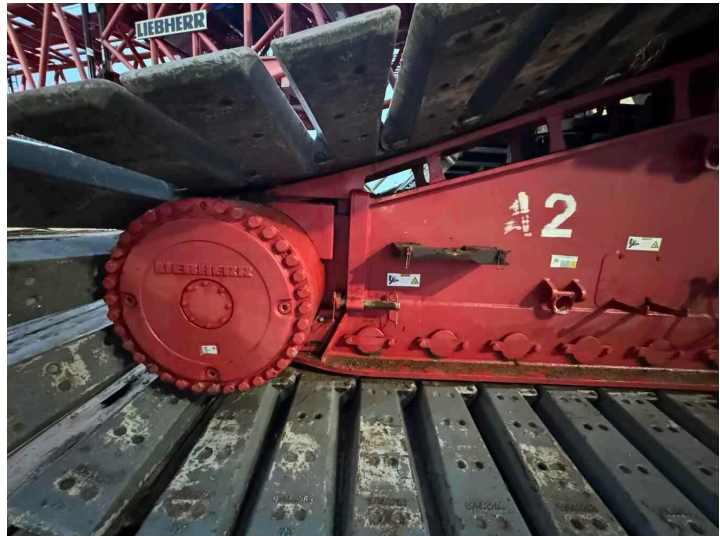


Photo 7



Q16: Are the Travel Locks functioning properly and free of excessive wear?

N/A

Q17: Are the Track Frame warning and information labels present, legible, and durable?

YES

Q18: Are the Steering Clutches / System functioning properly and free of excessive wear?

N/A

Q19: Are the Grease Containers (Grease Pumps) full of Grease and Working?

YES

Appear to have mixed grease.

Photo 1



Photo 2



Q20: Have the Lower Roller Grease Line guards been removed, and the Grease Lines checked for leaks, abrasion, significant wear, and dirt/rock buildup?

YES

Q21: Are the Hydraulic Hoses and/or their connections free of leaks, blistering, abnormal deformation, excessive abrasion, scrubbing, or signs of impending failure?

YES

No deficiencies observed during inspection.

Photo 1

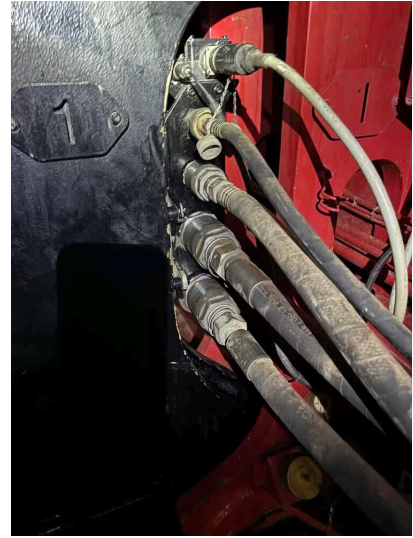


Photo 2

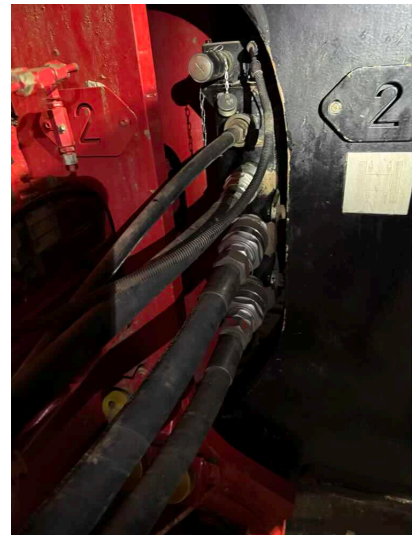


Photo 3

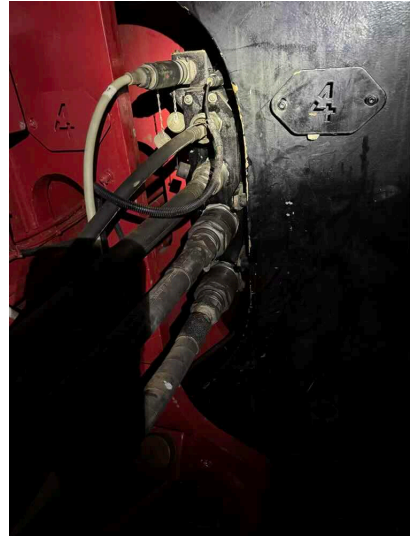
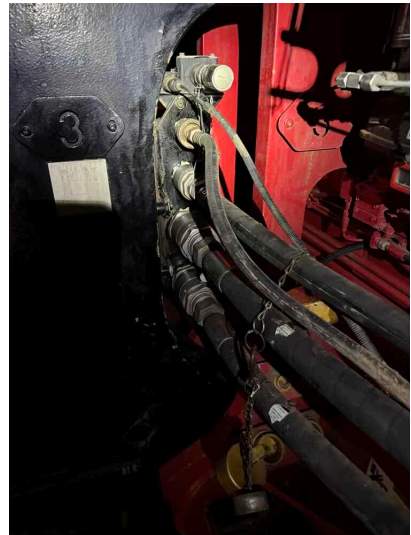


Photo 4



Q22: Are the Track Frame Electrical Connections clean and free of damage?

YES

No deficiencies observed during inspection.

Photo 1

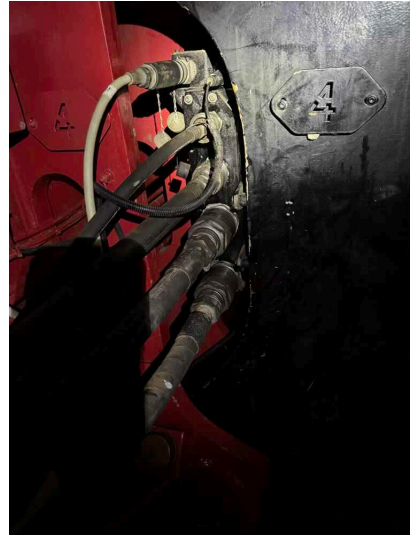


Photo 2

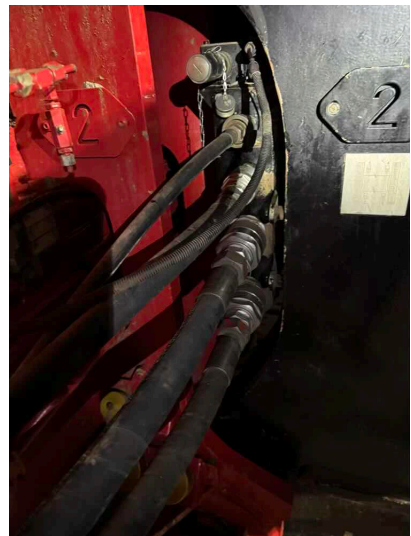


Photo 3

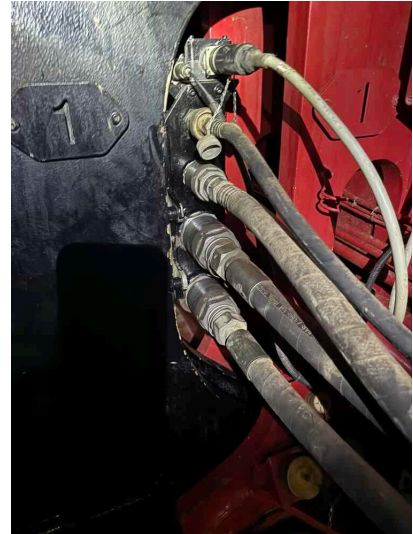
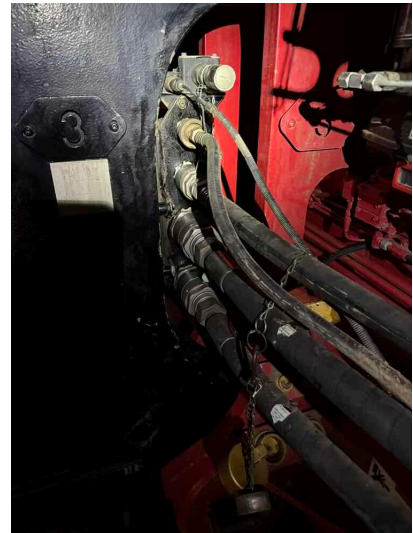


Photo 4



Q23: Are the Carbody and Track Frame Hydraulic and Electrical Caps, Plugs, and Covers present and free of damage?

YES

Q24: Are the Hydraulic Motors free of unusual noise, excessive overheating, loose bolts, shaft seals and pump section leaks?

YES

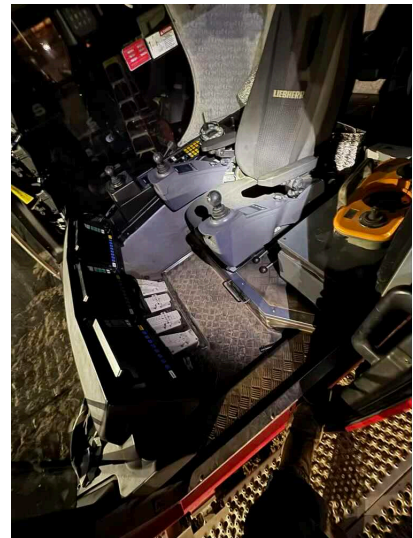
OPERATORS CAB

Q1: Is the Operator's Cab clean and free of any garbage, empty containers, old paperwork, etc.?

YES

Fairly clean.

Photo 1



Q2: Are the Grab Rails, Steps, and Platforms in a safe and usable condition?

YES

No deficiencies observed during inspection.

Photo 1

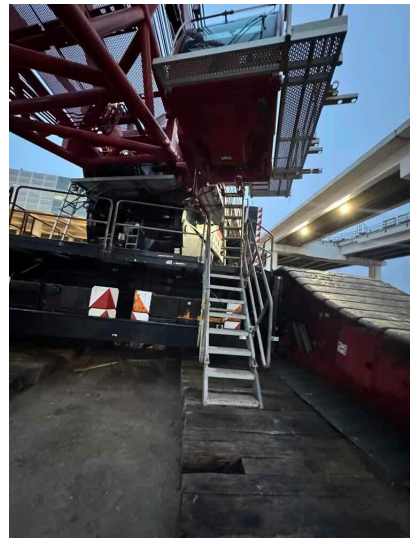


Photo 2

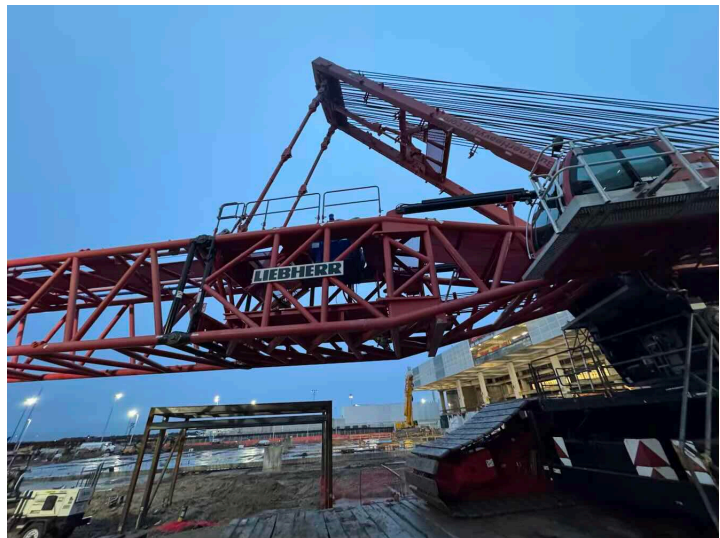


Photo 3

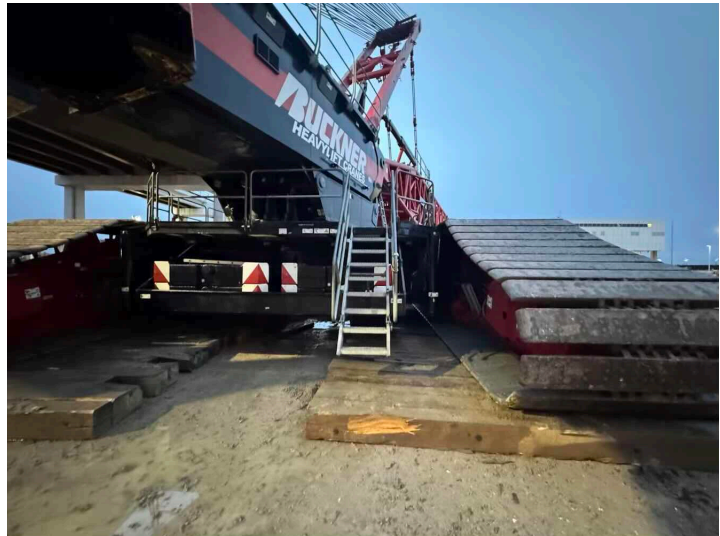


Photo 4

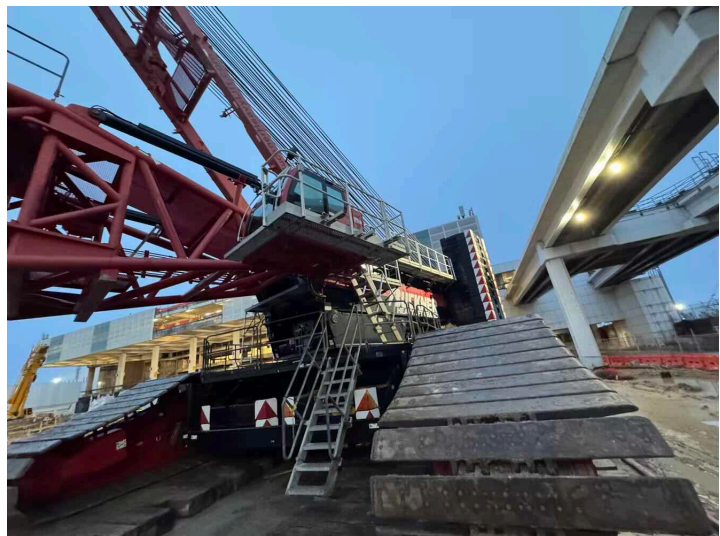


Photo 5

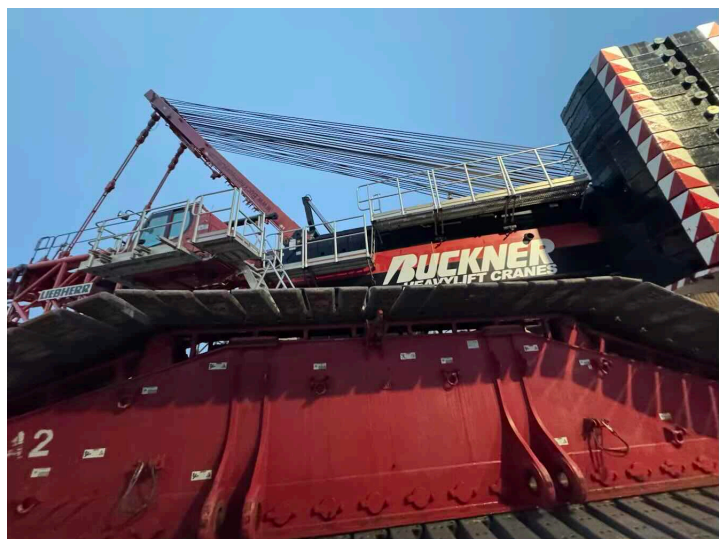
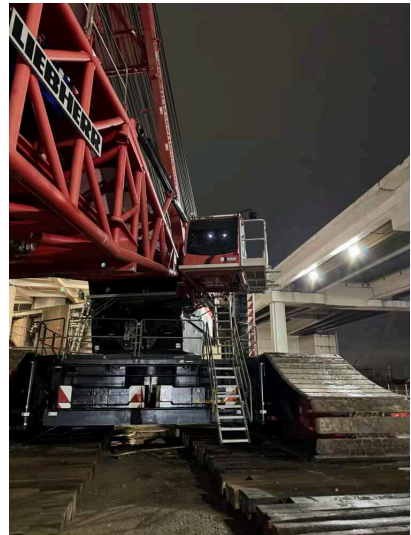


Photo 6



Photo 7



Q3: Do the Anti-Skid Surfaces on the machine still have their slip-resistant properties present and functioning?

YES

Q4: Are all the External / Working Lights on the crane present and functioning?

YES

Photo 1

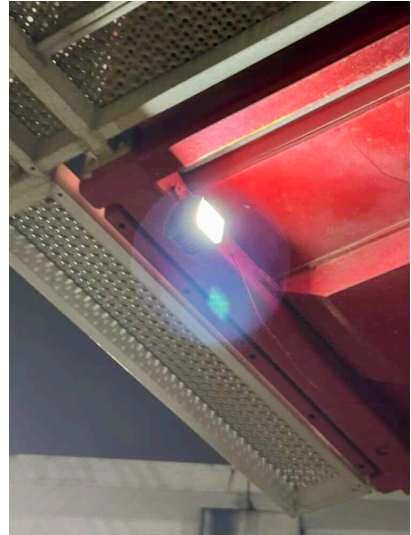


Photo 2

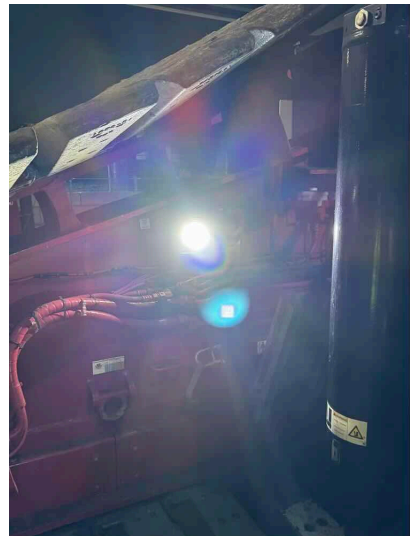


Photo 3

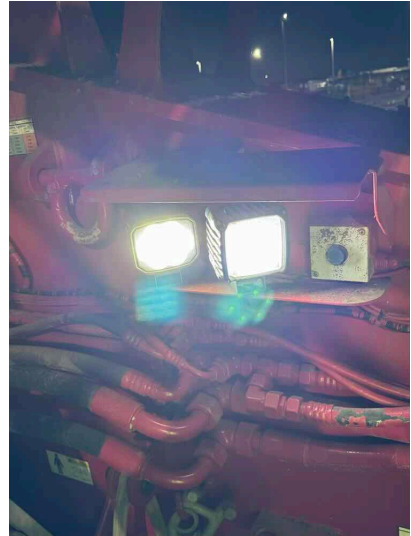


Photo 4

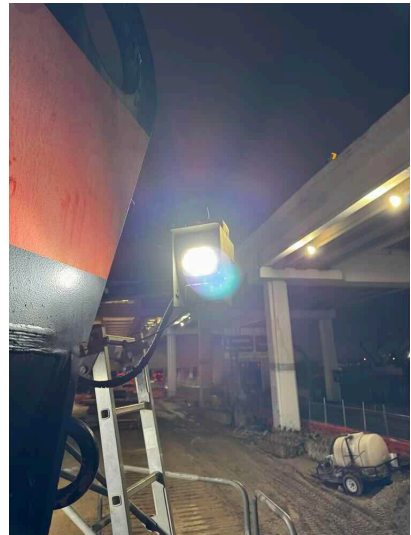


Photo 5

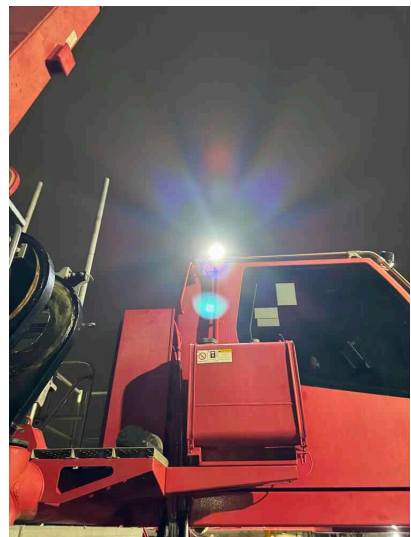


Photo 6

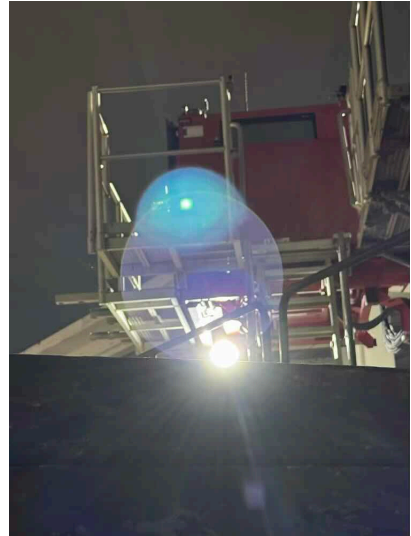


Photo 7

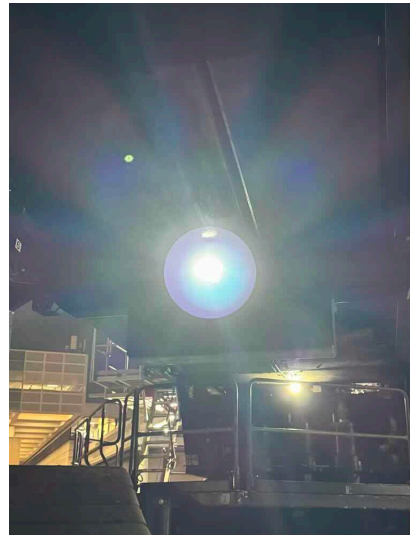


Photo 8

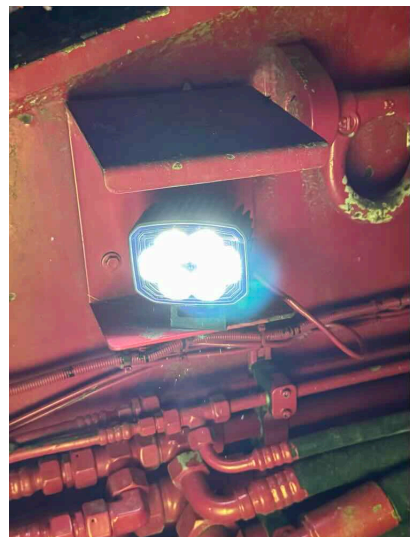


Photo 9

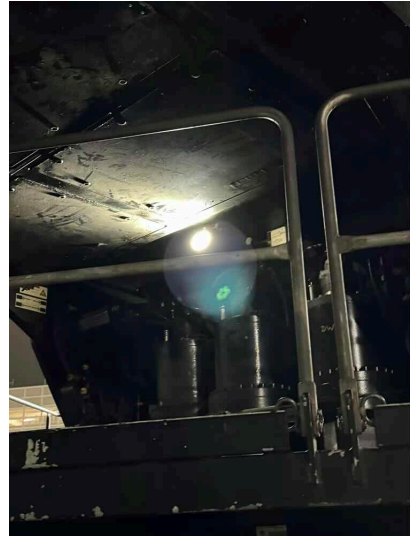


Photo 10

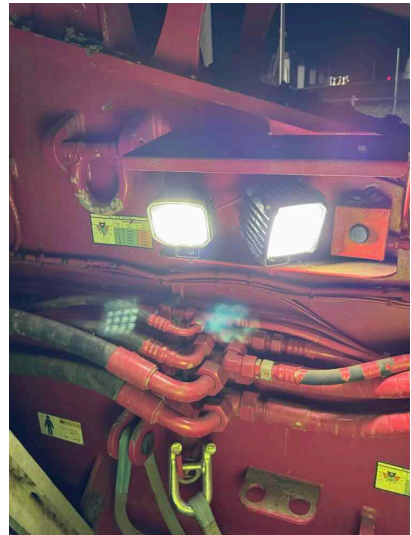


Photo 11



Q5: Are the Windows clear and free of defects?

YES



Assembly / Disassembly / Annual / Inspection Form

Dec 10, 2024

Q6: Are all the Windshield Wipers in good working order without issues?

NO

Need new blades, dry.

Photo 1



Q7: Are the Windshield Washers in an operable condition?

NO

Top works, windshield does not work.

Photo 1

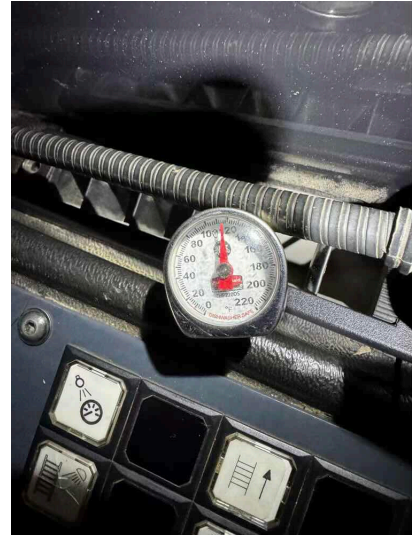


Q8: Is the Defroster / Heater in an operable condition?

YES

Functioning properly.

Photo 1



Q9: Is the Auxiliary Heater in an operable condition?

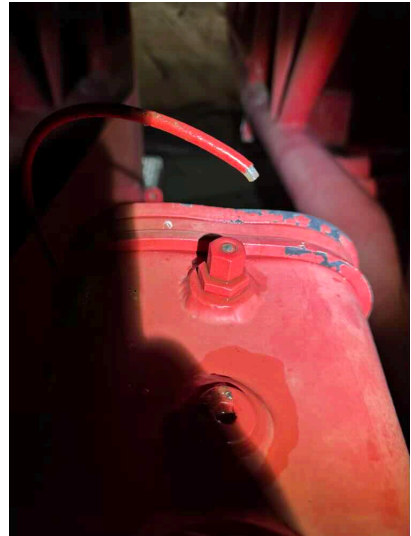
NO

Out of kerosene. Has broken fuel line.

Photo 1



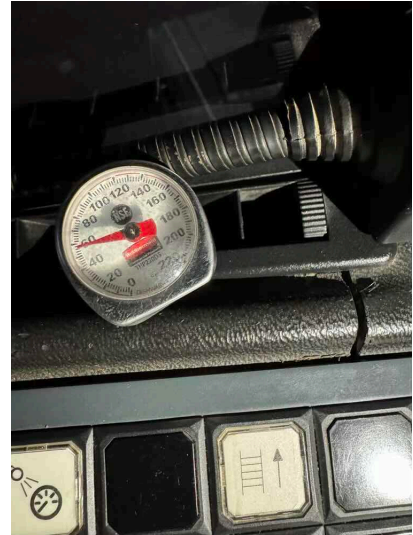
Photo 2



Q10: Is the Air Conditioner in an operational condition? NO

Does not blow cool air. Registers same as outside temperature.

Photo 1



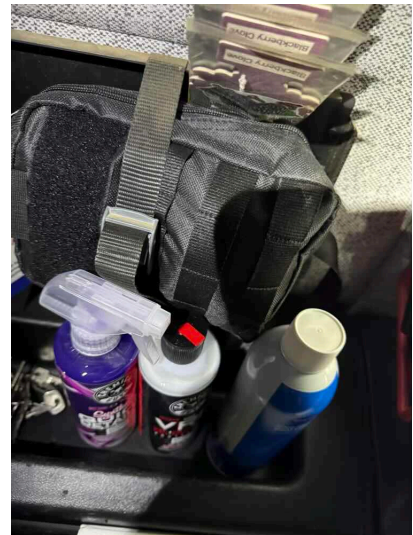
Q11: Is the Door Restraint working properly by preventing inadvertent opening or closing while traveling or operating the machine? YES

Q12: Is there a US (Domestic) First-Aid Kit present in the cab of the machine?

YES

Present.

Photo 1



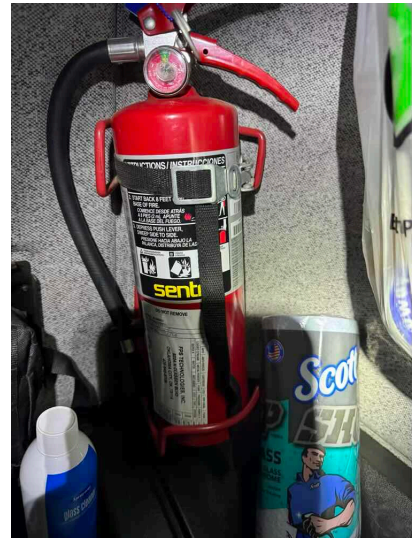
Q13: Is the US (Domestic) First-Aid Kit within its expiration date and complete with all the original supplied items?

YES

Q14: Is the Fire Extinguisher present, in a safe operating condition, and free of apparent damage that could cause failure during its use? YES

Present.

Photo 1



Q15: Are all Fire Extinguishers on the Crane of the US Type ABC Fire Extinguisher? YES

Q16: Are all the Fire Extinguishers tagged and is the Monthly Inspection completed with the Month and Year Punched? YES

Q17: Are all the Fire Extinguishers readily and easily accessible in the event of an emergency? YES

Q18: Are all the Mirrors present, clear, and free of defects? YES

Q19: Is the Operators Seat present and in good condition? YES

Q20: Is the Seat Belts present, clean, and in an operable condition? N/A

Q21: Is the Operators Manual in good condition, present in the cab of the machine, and readily available for review? YES

Q22: Are all the originally supplied and required Safety / YES



Assembly / Disassembly / Annual / Inspection Form

Dec 10, 2024

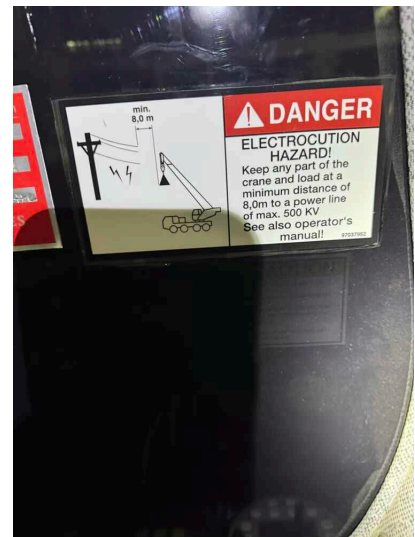
Warning Decals and Labels present in a good and legible condition?

Q23: Is the Electrocutation Warning Sign (Inside) posted in the cab and in view of the Operator?

YES

Present.

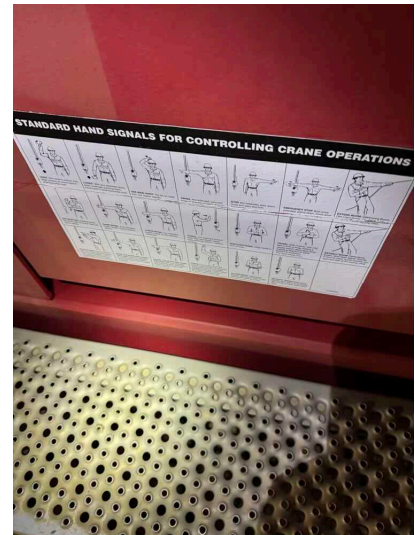
Photo 1



Q24: Is there a Hand Signal Chart posted on the Crane in a good and legible condition? YES

Present.

Photo 1



Q25: Is the Swing Brake functioning properly and free of excessive wear? YES

Q26: Is the Positive Swing Lock functioning properly and free of excessive wear? N/A

Q27: Are the Control Functions (Mechanisms) properly adjusted, functioning properly, and free of excessive wear and contamination from water, excessive lubrication, and dirt or foreign material? YES

Q28: Are the Operating Control Handle Rubber Boots without dry-rot, rips, tears, or holes which would allow entry of dirt and contaminants into the control.

YES

No deficiencies observed during inspection.

Photo 1

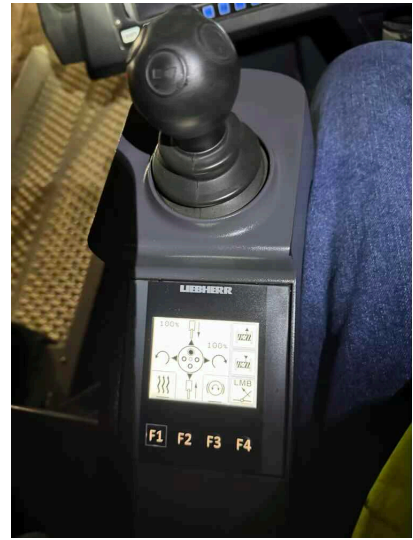


Photo 2

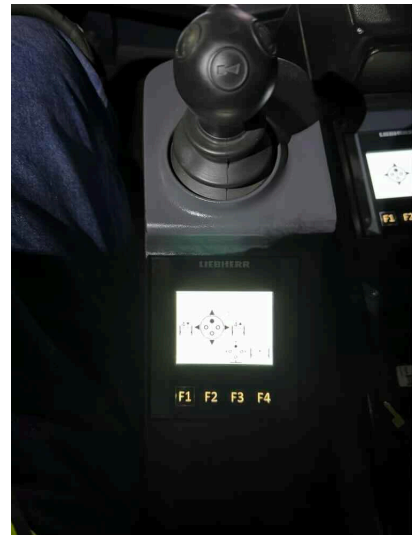


Photo 3



Q29: Do all the LICCON Monitors boot up and function without issue?

YES

Q30: Are the LICCON Monitors displaying information in Imperial or Metric?

Imperial

Q31: Are all the functional switches, gauges, and indicators in the Operators Cab functioning properly free of any issues and without excessive deterioration, dirt, or moisture accumulation?

YES

No deficiencies observed during inspection.

Photo 1

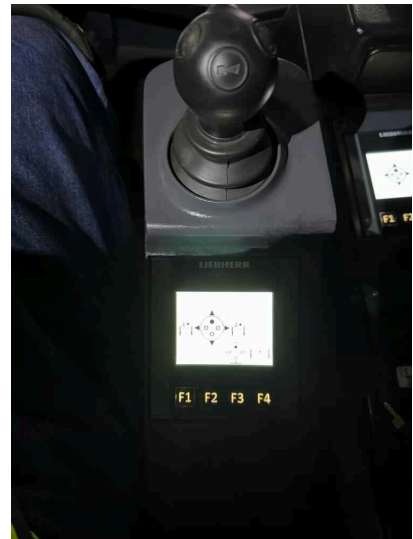


Photo 2

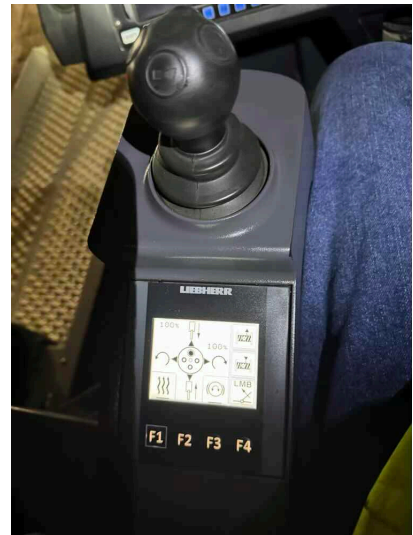


Photo 3



Photo 4

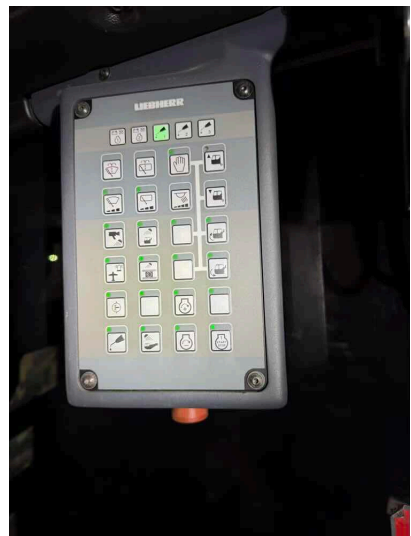


Photo 5



Q32: Are all the Cameras and Camera Components present and functioning without issue?

NO

W5 camera not working. Have a plug that had been pulled apart at S pivot heel.

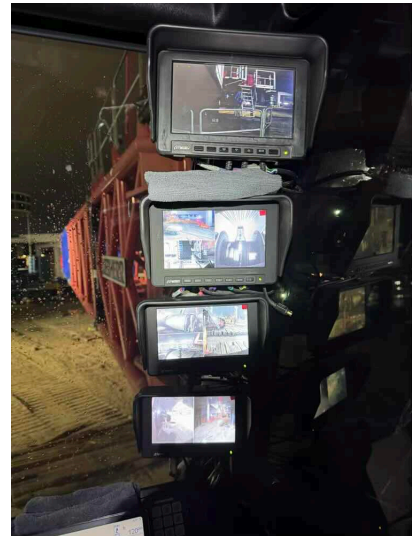
Photo 1



Photo 2



Photo 3



- | | |
|--|-----|
| Q33: Do machines equipped with Foot Pedal Brakes have locks and are they functioning properly? | N/A |
| Q34: Is the Engine Clutch functioning properly and free of excessive wear? | N/A |
| Q35: Are the Accelerator / Throttle Control properly adjusted, functioning properly, and free of excessive wear and contamination? | YES |
| Q36: Are all the Control Markings present and legible as per each function? | YES |
| Q37: Is the Cab Tilt Hydraulic Circuit, Hydraulic Cylinder, Hoses, Lines, and Fittings working and without issue? | YES |

Q38: Is the Travel Audible Alarm in operable condition?

NO

Not functioning.

Photo 1



Q39: Is the Swing Audible Alarm in operable condition?

YES

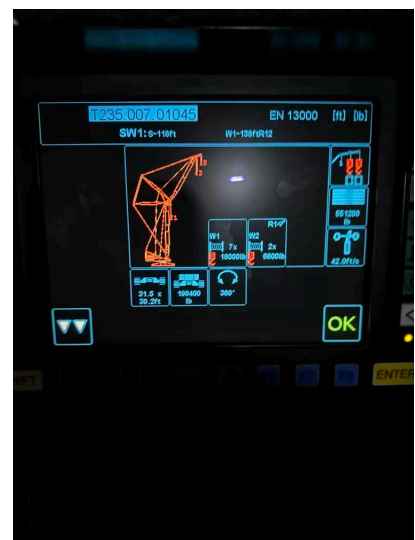
LOAD CHART

Q1: Is the load chart information Per Configuration available and present in the cab of the machine? Check YES if Load Charts are Electronic and Present in the Computer.

YES

Crane set up correct configuration.

Photo 1



Q2: Is a substantial and durable "load rating chart" with clearly legible letters and figures present and securely fixed to the crane cab within easy reach of the Operator when seated? Check YES if Load Charts are Electronic and Present in the Computer.

YES

Q3: Does the "load rating chart" have clearly legible letters and figures and is it in a good general condition? Check YES if Load Charts are Electronic and Present in the Computer.

YES

Q4: Is the "load rating chart" Visible to the Operator while seated at his control station? Check YES if Load Charts are Electronic and Present in the Computer.

YES

Q5: Is the "load rating chart" Secured and fixed to the crane cab within easy reach of the Operator. Check YES if Load Charts are Electronic and Present in the Computer.

YES

SAFETY DEVICES AND OPERATIONAL AIDS

Q1: Is the Horn present and functioning properly?	YES
Q2: Is the Boom Angle Indicator present and does it function properly without issue or significant inaccuracies?	YES
Q3: Is the Boom Length Indicator present and does it function properly without issue or significant inaccuracies?	N/A
Q4: Does the Main Drum Rotation Indicator function properly?	YES
Q5: Does the Auxiliary Drum Rotation Indicator function properly?	YES
Q6: Does the Boom Hoist Drum Rotation Indicator function properly?	YES

Q7: Does the Load Moment Indicator function properly?

YES

No deficiencies functions properly.

Photo 1

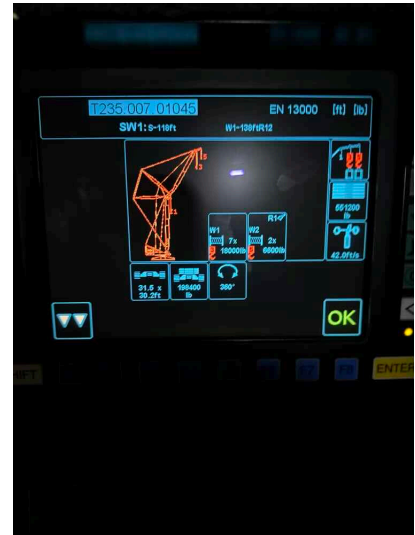
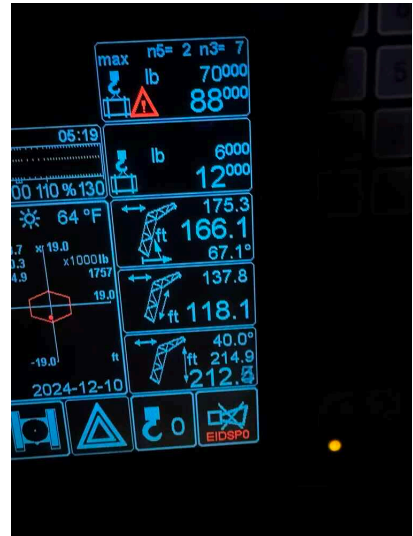


Photo 2



Photo 3



Q8: Does the Load Weight Indicator function properly? YES

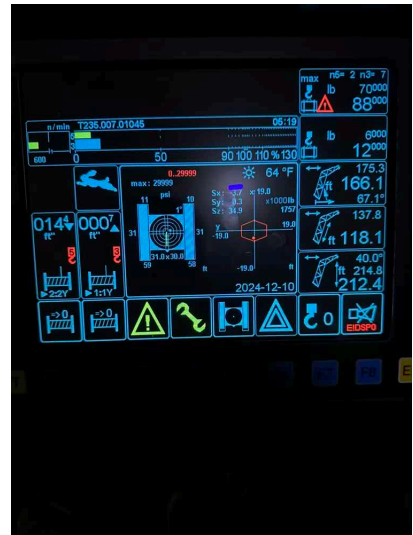
Q9: Is the Radius Indicator present and does it function properly without issue or significant inaccuracies? YES

Q10: Is the Crane Level Indicator present and functioning correctly?

YES

Functioning properly.

Photo 1



Q11: Does the Anti-Two Block Device(s) (A2B) function properly?

YES

Auxiliary and main tested good.

Photo 1



Photo 2

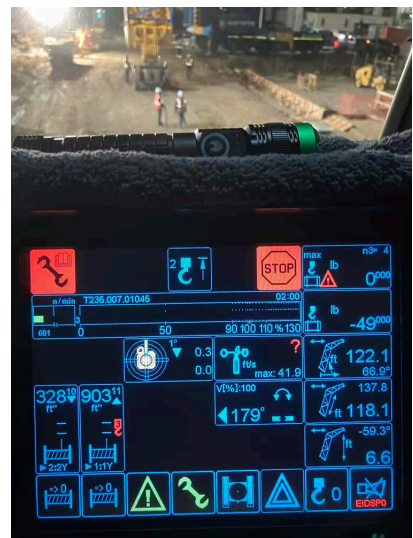


Photo 3



Q12: Does the Boom Hoist Limiting Device (High Boom Kickout) function properly?

YES

Tested good.

Photo 1



Q13: Is the Boom Hoist Ratchet and Pawl / Internal Gear Brake functioning properly and free of excessive wear?

YES

Q14: Is the Outrigger / Stabilizer Position Sensor present and functioning properly?

N/A

Q15: Is the Luffing Jib Angle Sensor / Indicator present and functioning properly?

YES

Q16: Does the Luffing Jib Limiting Device function properly?

YES

Q17: Is the Aviation Light present and functioning properly?

YES

Functioning properly.

Photo 1

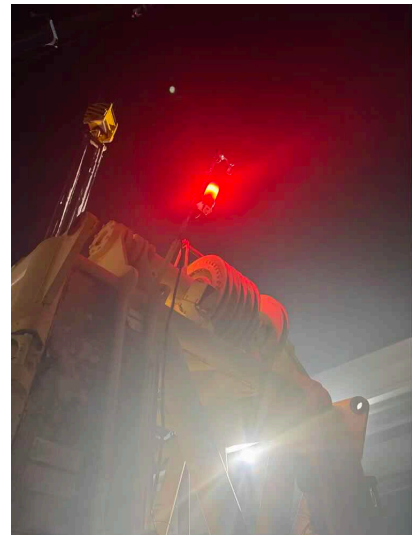
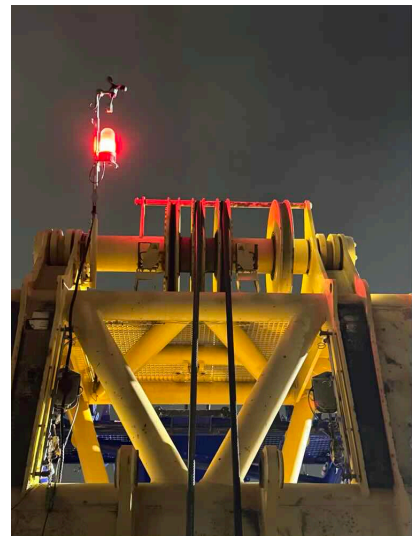


Photo 2



Q18: Is the Aviation Flag present and in good condition?

N/A

Q19: Is the Wind Meter / Anemometer present and functioning correctly without any significant variations or inaccuracies?

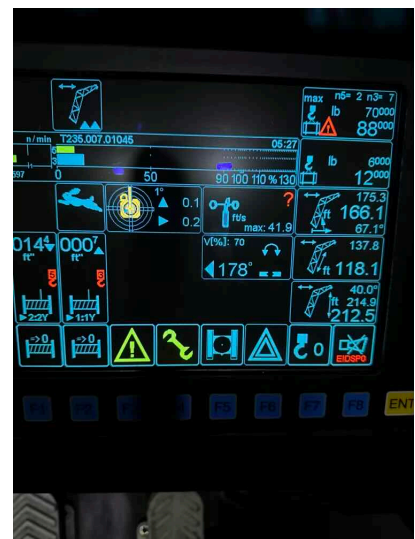
NO

Reading extremely high with little to no breeze, stopped working completely after boom up

Photo 1



Photo 2





UPPER WORKS - ENGINE

Q1: Is the Performance of the engine such that all systems are operating properly?

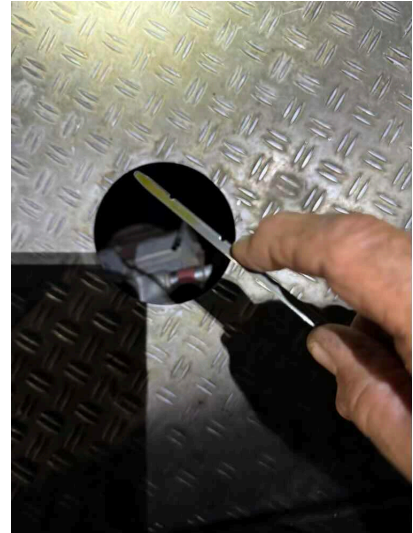
YES

Q2: Is the Engine Oil Level at the proper full mark?

YES

Oil is full.

Photo 1



Q3: Is the Engine free of any engine oil leaks?

YES

Q4: Is the Antifreeze level full and at the proper level?

YES

Level is good / Freeze point -20° / Boiling point 129°

Photo 1

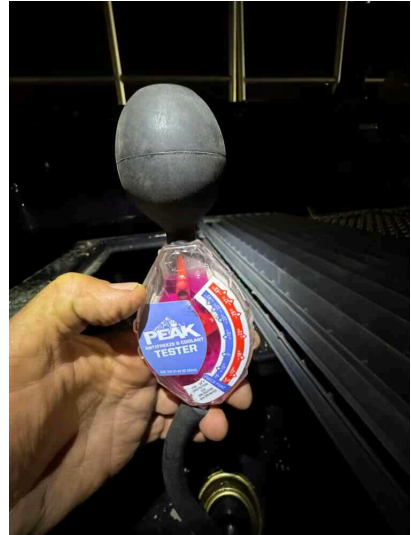


Photo 2

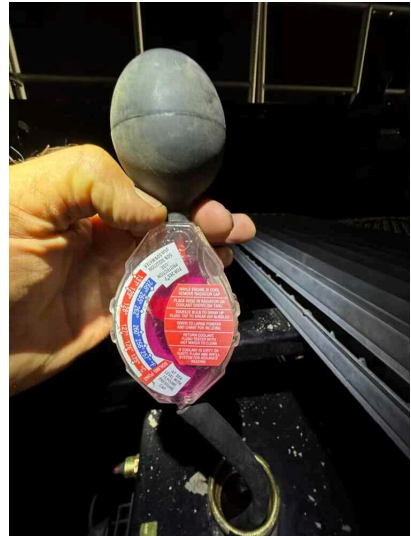
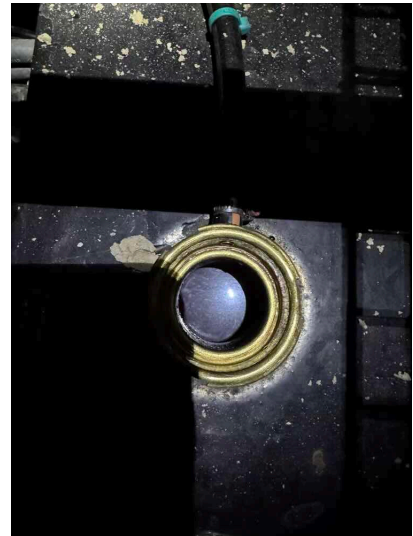


Photo 3



- Q5: Is the Cooling System, Hoses, Fittings, etc. free of Coolant Leaks? YES
- Q6: Is the Radiator Clean and free of any dirt buildup or obstructions that would cause inefficiencies or overheating in the cooling system? YES
- Q7: Is the Exhaust System / Guards and Insulation free of any issues, working correctly, and are the guards and insulation in place to prevent employees from encountering a hot surface in the course of their normal duties? YES
- Q8: Are all Hoses free from deterioration and leakage, particularly in hoses that flex during normal operation? YES

Q9: Are Belts free of significant wear, cracking, and in good condition?

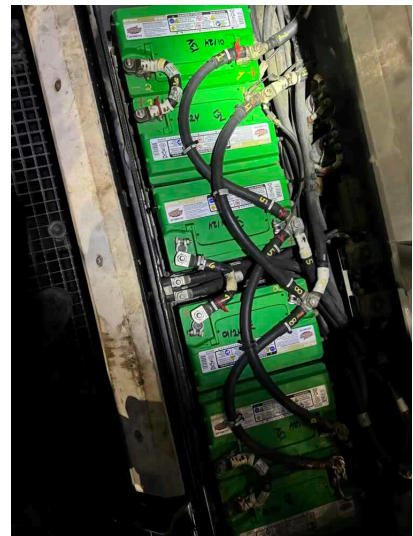
YES

No deficiencies observed belt looks good. Batteries good.

Photo 1



Photo 2



Q10: Are all Guards / Covers / Rotating and Reciprocating Components properly in place and secured around or over items that reciprocate, rotate, or otherwise move?

NO

Missing cover lower compartment to access belts by W4. Batteries look good but missing 2 latches on cover.

Photo 1

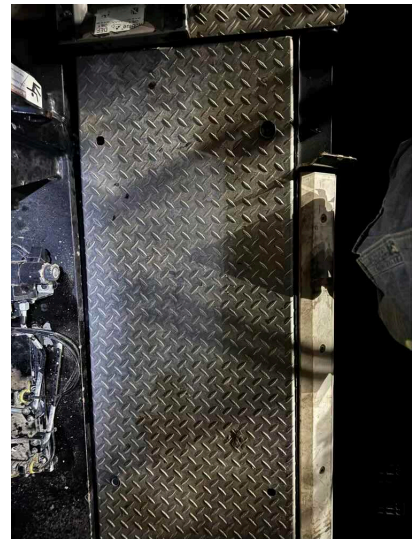


Photo 2

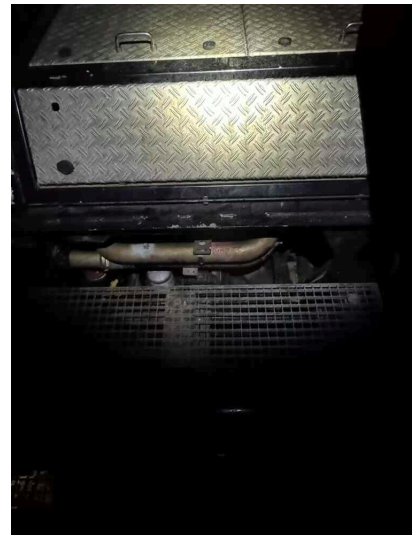


Photo 3



Q11: Are the Engine Mounts free of deformation, cracks, or significantly corroded or dry-rotted members?

YES

ROTATING UPPER WORKS

- | | |
|--|-----|
| Q1: Is the Swing Bearing functioning properly and free of excessive distortion, cracks, or wear? | YES |
| Q2: Are the Rollers / Roller Path functioning properly and free of excessive distortion, cracks, and wear? | YES |
| Q3: Is the Slew Ring Connection free of deformation, cracks, significantly corroded members, loose fasteners, cracked welds, and significant wear? | YES |
| Q4: Is the Ring / Pinion Gear functioning properly and free of excessive distortion, cracks, dirt buildup and wear? | YES |

Q5: Are the Grease Containers (Grease Pumps) full of Grease and Working?

YES

Full bottom one appears to have mixed grease.

Photo 1

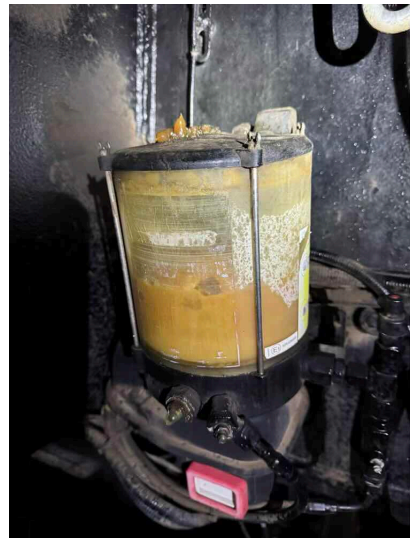


Photo 2

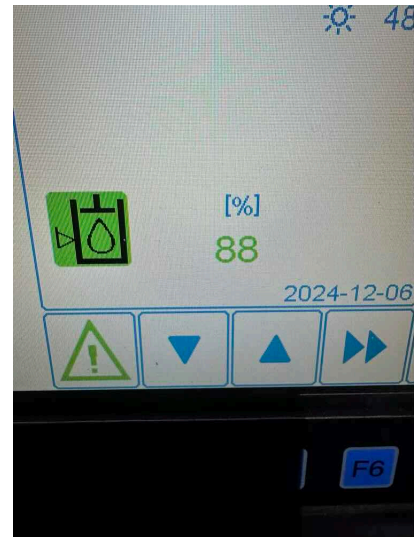


Q6: Is the Hydraulic Fluid Level at its proper level?

YES

Fluid is at 88%

Photo 1



Q7: Are the Hydraulic Pump(s) / Motors free of unusual noise, excessive overheating, loose bolts, shaft seals, and pump section leaks?

YES

Q8: Are the Hydraulic Hoses, Tubing, and Fittings and/or their connections free of leaks?

YES

Q9: Is the Hydraulic Pressure within manufacturer specifications and is the hydraulic pump free of unusual noise, excessive overheating, loose bolts shaft seals, and pump section leaks?

YES

Q10: Does the Electrical Wiring appear free of excessive deterioration, dirt, and moisture accumulation that would affect its proper operation?

YES

Q11: Does the Electrical / Hydraulic Swivel appear free of leaks, damage, deterioration, corrosion, and dirt and moisture accumulation that would affect its proper operation?

YES

Q12: Is the Main Winch properly installed in the Upperworks and are the mounting fasteners without issue?

YES

Properly installed and secured.

Photo 1

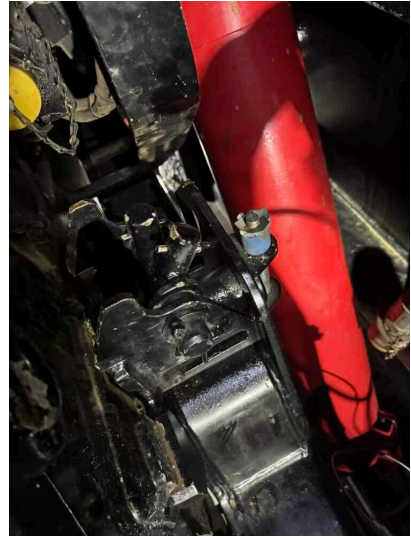
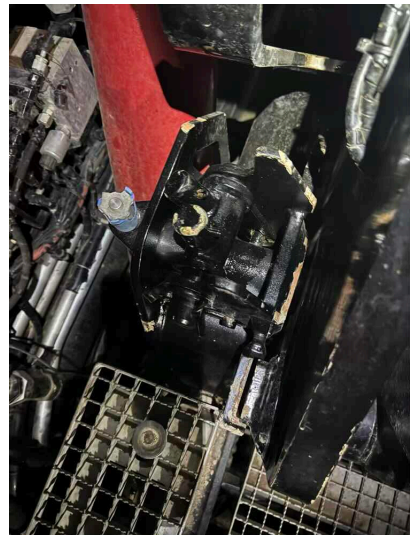


Photo 2



Q13: Is the Main Winch hydraulic motor, lines, hoses, valves, and connections free of leakage, damage, or chaffing?

YES

Q14: Is the Main Winch Drum Encoder properly adjusted and without issue?

YES

Q15: Has the Main Winch Drum Fluid Level been checked and is it at the proper level?

YES

Fluid is at proper level.

Photo 1

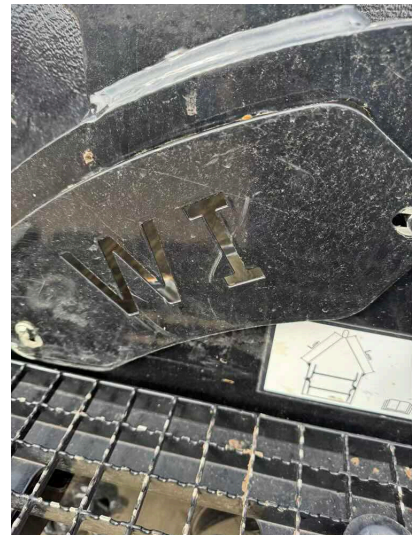
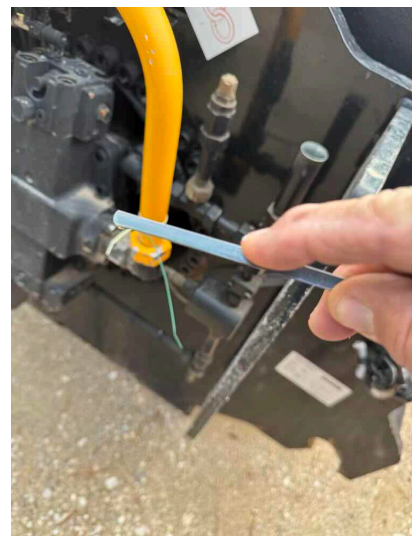


Photo 2



Q16: Are the Main Winch Hydraulic QD Caps / Plugs present and attached to the Hydraulic lines on the Winch, so they don't get damaged or lost?

YES

Q17: Are the Main Hoist Clutches / Brakes / Internal Gear Brakes functioning properly and free of excessive wear?

YES

Q18: Is the Main Hoist Rope Spooling without kinking, crushing, unstranding, birdcaging, signs of core failure, and steel core protrusion between the outer strands?

YES



Assembly / Disassembly / Annual / Inspection Form

Dec 10, 2024

Q19: Does the Main Hoist have a Minimum of Two (2) Rope Wraps left on the drum when the load and/or boom is in its lowest position? YES

Q20: Is the Main Hoist Drums and Flanges free of cracks and significant wear? YES

Q21: Is the Main Hoist Wire Rope Lubricated? YES

Q22: Is the Main Hoist Reeving according to manufacturer specifications and without kinking, crushing, unstranding, birdcaging, signs of core failure, and steel core protrusion between the outer strands? YES

Q23: Is the Aux Winch properly installed in the Upperworks and are the mounting fasteners without issue?

YES

Properly installed and secured.

Photo 1

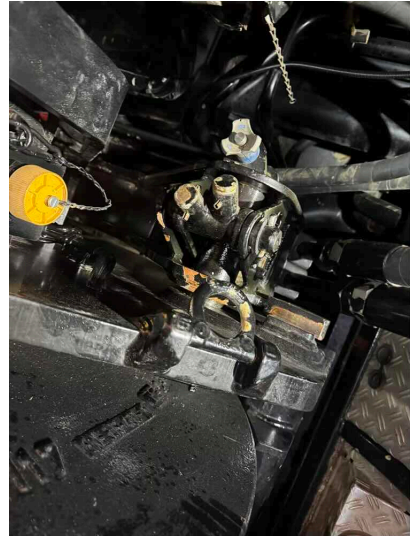


Photo 2



Q24: Is the Aux Winch hydraulic motor, lines, hoses, valves, and connections free of leakage, damage, or chaffing?

YES

Q25: Is the Aux Winch Drum Encoder properly adjusted and without issue?

YES

Q26: Has the Aux Winch Drum Fluid Level been checked and is it at the proper level?

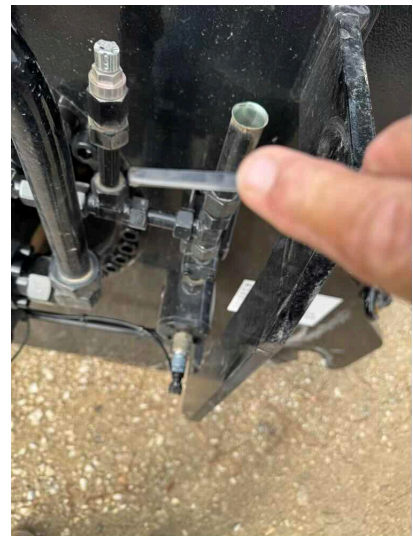
YES

Fluid is at proper level.

Photo 1



Photo 2



Q27: Are the Aux Winch Hydraulic QD Caps / Plugs present and attached to the Hydraulic lines on the Winch, so they don't get damaged or lost?

YES

Q28: Are the Auxiliary Hoist Clutches / Brakes / Internal Gear Brakes functioning properly and free of excessive wear?

YES

Q29: Is the Auxiliary Hoist Rope Spooling without kinking, crushing, unstranding, birdcaging, signs of core failure,

YES



and steel core protrusion between the outer strands.

Q30: Does the Auxiliary Hoist have a Minimum of Two (2) Rope Wraps left on the drum when the load and/or boom is in its lowest position? YES

Q31: Is the Auxiliary Hoist Drums and Flanges free of cracks and significant wear? YES

Q32: Is the Auxiliary Hoist Wire Rope Lubricated? YES

Q33: Is the Auxiliary Hoist Reeving according to manufacturer specifications and without kinking, crushing, unstranding, birdcaging, signs of core failure, and steel core protrusion between the outer strands? YES

Q34: Is the Boom Hoist Winch properly installed in the Upperworks and are the mounting fasteners without issue?

YES

Properly installed and secured. Travel pins out and stowed. Lower bail travel pins out and secured.

Photo 1

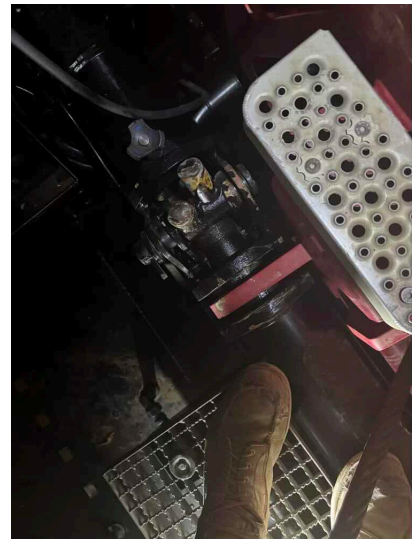


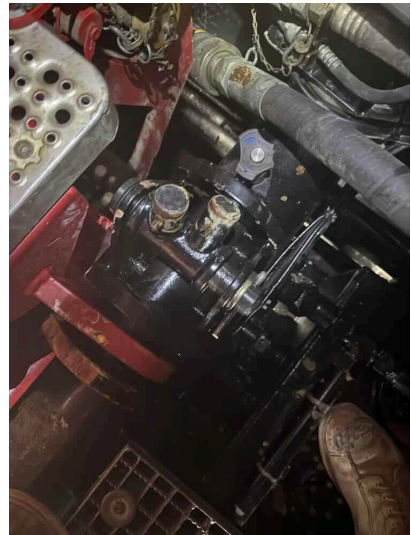
Photo 2



Photo 3



Photo 4



Q35: Is the Boom Hoist Winch hydraulic motor, lines, hoses, valves, and connections free of leakage, damage, or chaffing?

YES

Q36: Is the Boom Hoist Winch Drum Encoder properly adjusted and without issue?

YES

Q37: Has the Boom Hoist Winch Drum Fluid Level been checked and is it at the proper level?

YES

Fluid is at proper level left and right.

Photo 1



Photo 2



Q38: Are the Boom Hoist Winch Hydraulic QD Caps / Plugs present and attached to the Hydraulic lines on the Winch, so they don't get damaged or lost?

YES

Q39: Are the Boom Hoist Clutches / Brakes / Internal Gear Brakes functioning properly and free of excessive wear?

YES

Q40: Is the Boom Hoist Rope Spooling without kinking, crushing, unstranding, birdcaging, signs of core failure,

YES



Assembly / Disassembly / Annual / Inspection Form

Dec 10, 2024

and steel core protrusion between the outer strands?

Q41: Does the Boom Hoist have a Minimum of Two (2) Rope Wraps left on the drum when the load and/or boom is in its lowest position? YES

Q42: Is the Boom Hoist Drums and Flanges free of cracks and significant wear? YES

Q43: Is the Boom Hoist Wire Rope Lubricated?

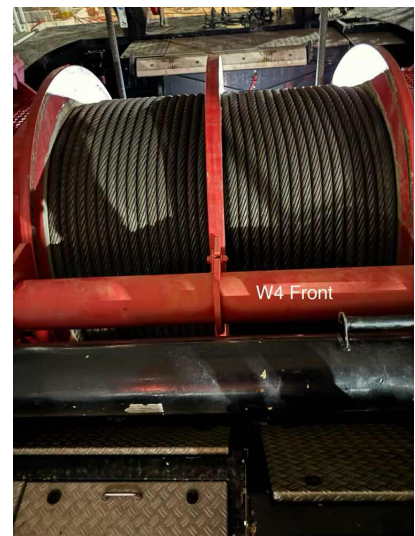
NO

Dry.

Photo 1



Photo 2



Q44: Is the Boom Hoist Reeving according to manufacturer specifications and without kinking, crushing, unstranding, birdcaging, signs of core failure, and steel core protrusion between the outer strands?

YES

Q45: Are the Boom Hoist Pawls and Ratchets / Internal Gear Brakes functioning properly and free of excessive wear?

YES

Q46: Is the Swing System, Swing Assembly, Swing Drives, Swing Motors, and Swing Gear Box free of unusual noise, excessive overheating, loose bolts, and full of oil?

YES

Oil on motors 1-2-3 at proper level.

Photo 1

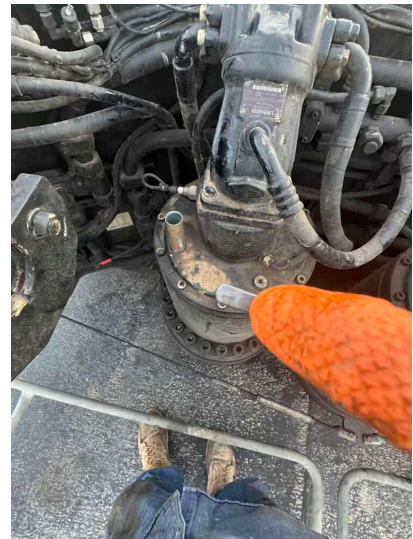


Photo 2

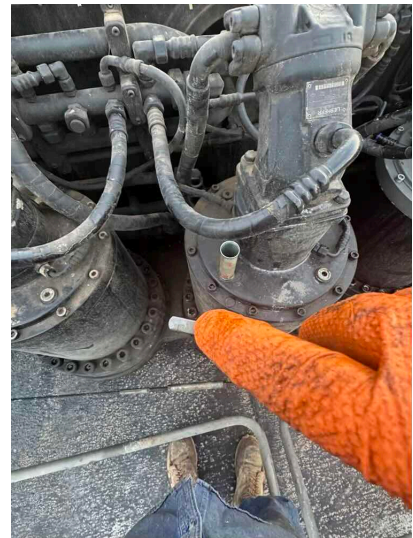


Photo 3

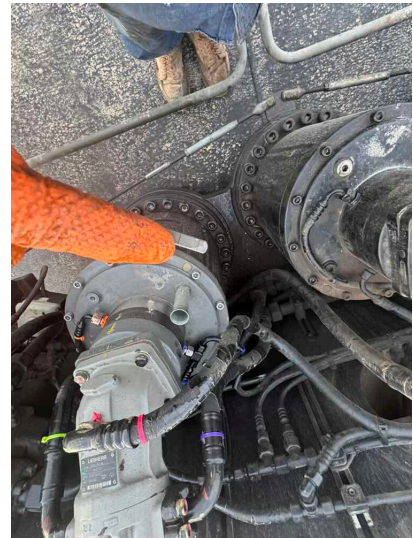
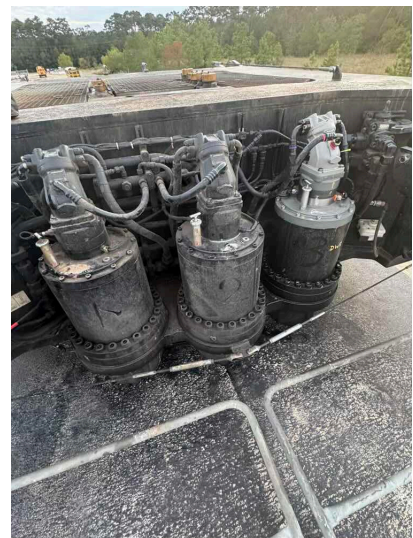


Photo 4



- Q47: Are the Hydraulic Motor, Valves, Lines, etc. free of unusual noise, excessive overheating, loose bolts, shaft seals and pump section leaks, along with hydraulic lines that are free of leaks and excessive wear? YES
- Q48: Are the Clutch and Brake Protection Guards in place, functioning properly, and free of excessive wear? N/A
- Q49: Is the Torque Converter / Pump Drive full of oil, functioning properly, and free of excessive distortion, cracks, and wear? YES
- Q50: Are the Torque Converter / Pump Drive Mounts free of deformation, cracks, or significantly corroded or dry-rotted members? YES



Assembly / Disassembly / Annual / Inspection Form

Dec 10, 2024

- | | |
|---|-----|
| Q51: Do the Anti-Skid Surfaces on the machine still have their slip-resistant properties present and functioning? | YES |
| Q52: Are the Grab Rails, Steps, and Platforms in a safe and usable condition? | YES |
| Q53: Are the Steps, Ladders, Handrails, and Guards used to access the Cab and Upper Works present and in a safe and usable condition? | YES |
| Q54: Is the Air Pressure System free of unusual noises/vibration, low speeds, excessive heating, low air pressure, and free of leaks? | YES |

Q55: Is all the Counterweight present, free of cracks, and without issues with the lifting bits?

NO

Some bits missing a corner.

Photo 1



Q56: Are all the Counterweight Trays and Mounting Hardware present and installed correctly per manufacturer?

YES

No deficiencies observed during inspection. Safety chains installed and secured.

Photo 1

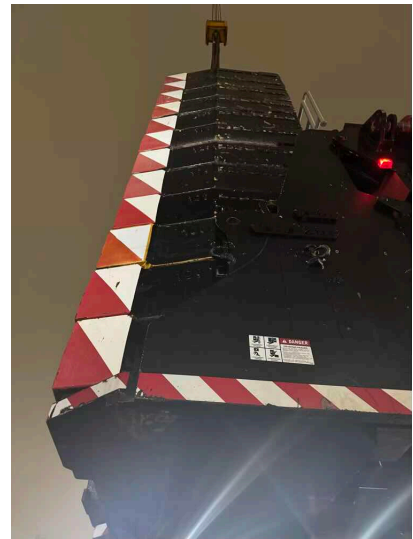


Photo 2

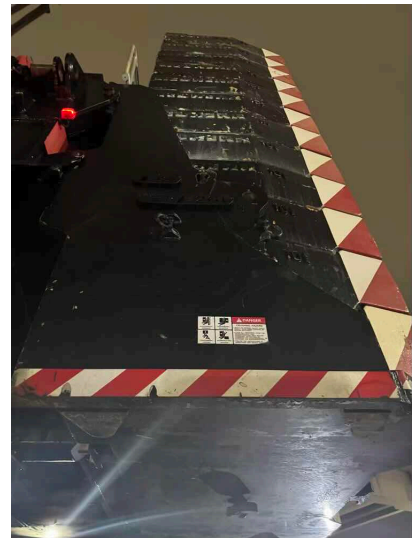


Photo 3

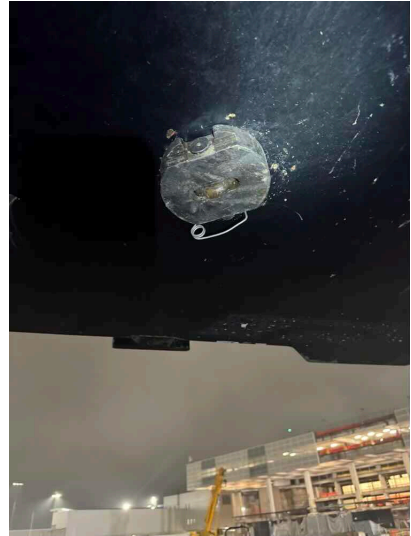
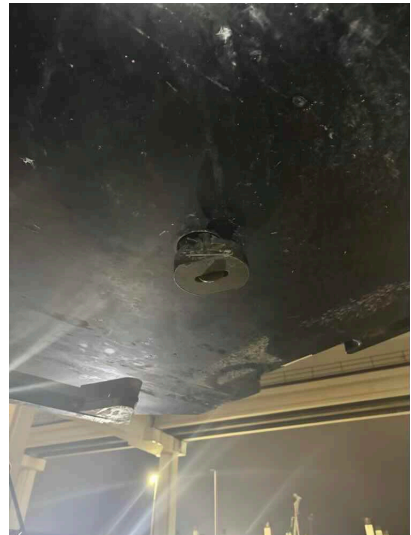


Photo 4



Q57: Are all the originally supplied and required Counterweight Warning Signs present in a good and legible condition?

YES

Present.

Photo 1

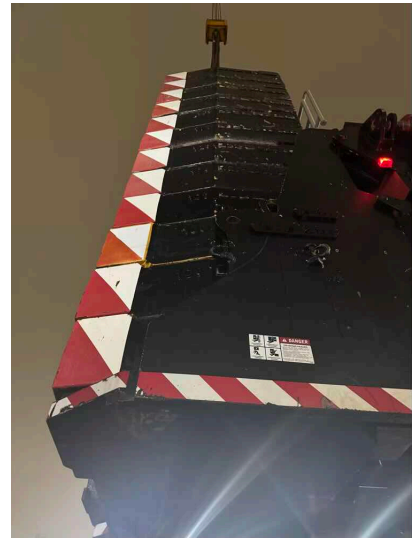
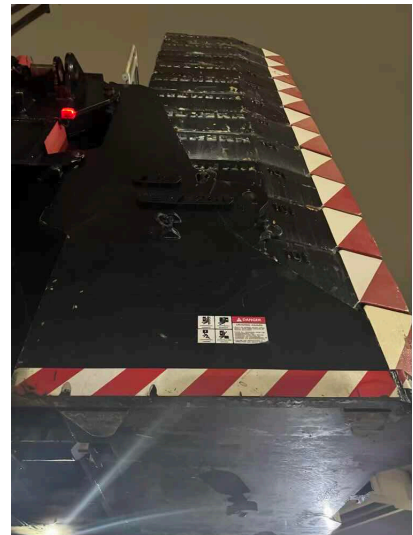


Photo 2



Q58: Is there an Electrocution Warning Sign (Outside) posted on the crane?

YES

Not on but I installed on both sides.

Photo 1

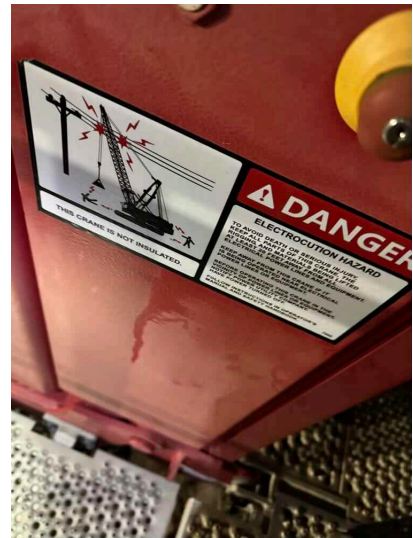
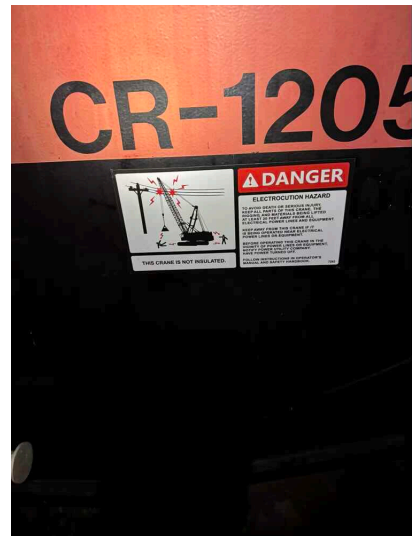


Photo 2



LATTICE BOOM

Q1: Are the Lattice Boom Section(s) in alignment and free of deformation, cracks, significantly corroded members, loose fasteners, cracked welds, and significant wear? YES

Q2: Are the Lattice Members free of deformation, cracks, significantly corroded members, loose fasteners, cracked welds, and significant wear? YES

Q3: Are the Chord Members free of deformation, cracks, significantly corroded members, loose fasteners, cracked welds, and significant wear? YES

Q4: Are the End Connections, Pins, Pin Retainers, and Push Pins free of deformation, cracks, significantly corroded members, loose fasteners, cracked welds, and significant wear?

YES

Pins properly installed and secured.

Photo 1

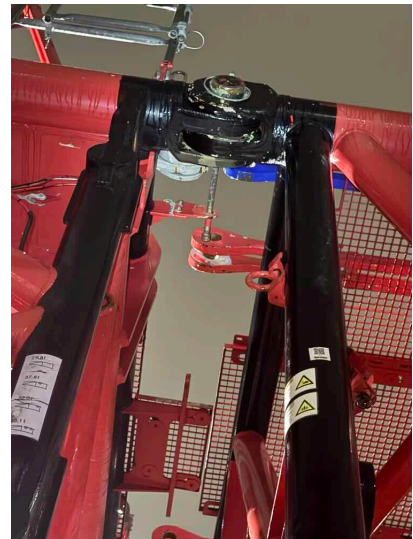


Photo 2

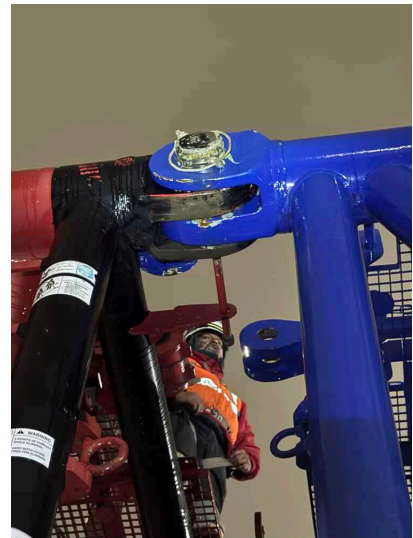


Photo 3



Photo 4



Photo 5



Photo 6

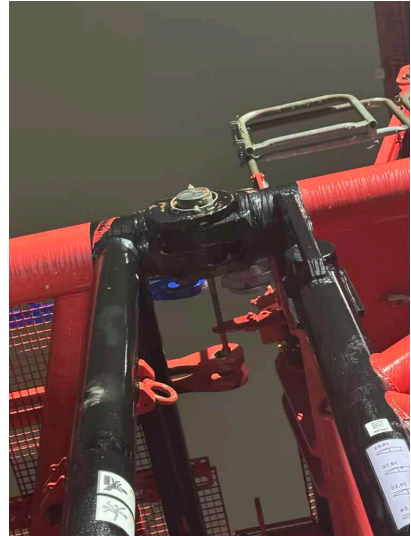


Photo 7



Photo 8

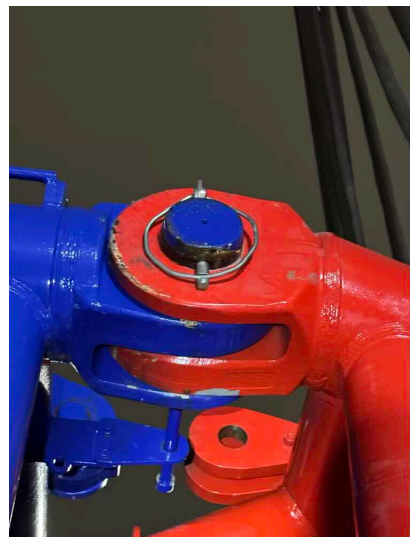


Photo 9

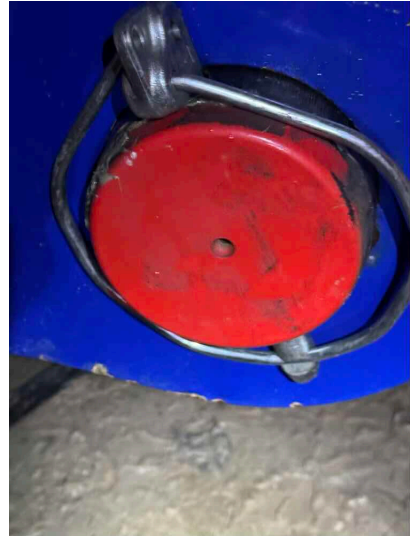
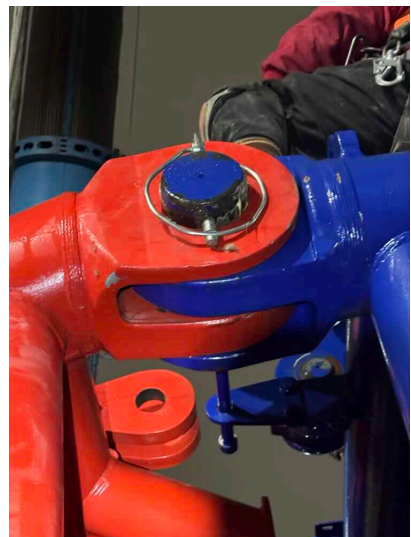


Photo 10



Photo 11



Q5: Are all the Boom Section Warning Labels and Decals present on each section, legible, and installed correctly per manufacturer?

YES

Installed 48 boom collapse warning decals on all boom none were installed.

Photo 1



Photo 2



Q6: Is the Boom Section and Configuration Sequence in accordance with the Manufacturer's instructions, prohibitions, limitations, and specifications?

YES

Q7: Is the Spreader Bar / Mid-Point Suspension free of deformation, cracks, significantly corroded members, loose fasteners, cracked welds, and significant wear?

N/A

Q8: Are the Boom Foot Pins / S-Pivot Main Pins and Keepers free from cracks and excessive wear?

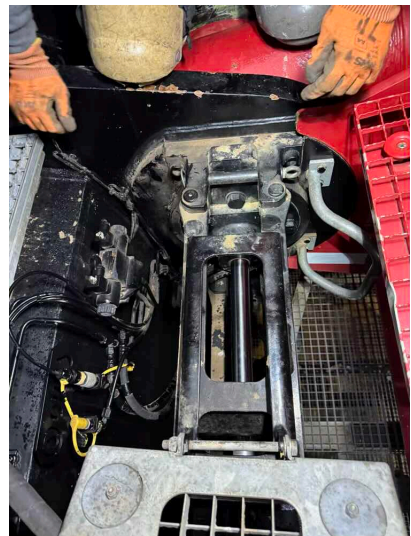
YES

Properly installed and secured.

Photo 1



Photo 2



Q9: Are the Boom Stop Cylinders (S Relapse Cylinders) free of deformation, cracks, significantly corroded members, loose fasteners, cracked welds, hydraulic leaks, and significant wear?

YES

No deficiencies observed during inspection.

Photo 1

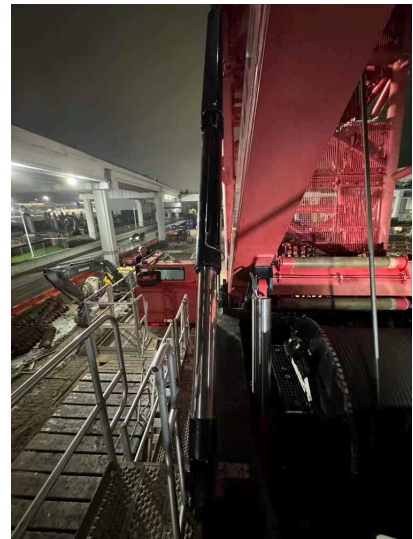
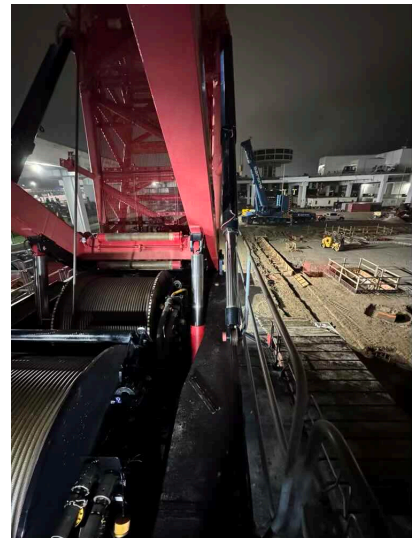


Photo 2



Q10: Are the Boom Foot Pins / D-Pivot Main Pins and Keepers free from cracks and excessive wear?

N/A

Q11: Are the Derrick Boom Stop Cylinders (D Relapse Cylinders) free of deformation, cracks, significantly corroded members, loose fasteners, cracked welds, hydraulic leaks, and significant wear?

N/A



Assembly / Disassembly / Annual / Inspection Form

Dec 10, 2024

- | | |
|---|-----|
| Q12: Is the Boom Head Section free of deformation, cracks, significantly corroded members, loose fasteners, cracked welds, and significant wear? | YES |
| Q13: Is the Auxiliary Boom Head / Extended Upper Boom Point (EUBP) free of deformation, cracks, significantly corroded members, loose fasteners, cracked welds, and significant wear? | YES |
| Q14: Are the Sheaves free from cracks and excessive wear | YES |
| Q15: Are the Sheaves free of excessive/abnormal side-to-side play? | YES |
| Q16: Are the Sheave Grooves free of excessive cable lube and grease build-up? | YES |
| Q17: Are the Wire Rope Retainer(s) present and installed correctly without significant wear? | YES |



JIB

Q1: Are the Lattice Members free of deformation, cracks, significantly corroded members, loose fasteners, cracked welds, and significant wear? YES

Q2: Are the Chord Members free of deformation, cracks, significantly corroded members, loose fasteners, cracked welds, and significant wear? YES

Q3: Are the End Connections, Pins, and Pin Retainers free of deformation, cracks, significantly corroded members, loose fasteners, cracked welds, and significant wear?

YES

Properly installed and secured.

Photo 1

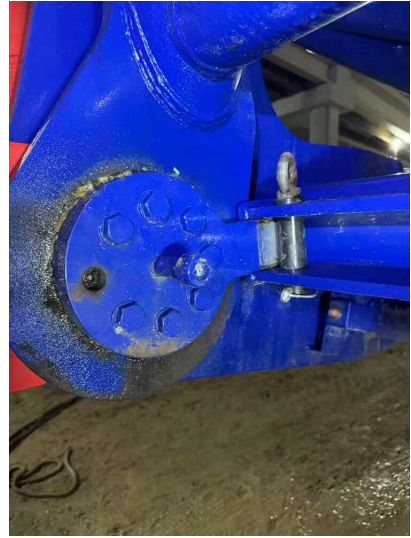


Photo 2

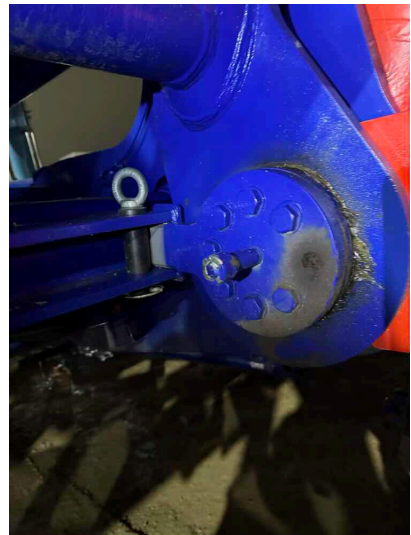


Photo 3

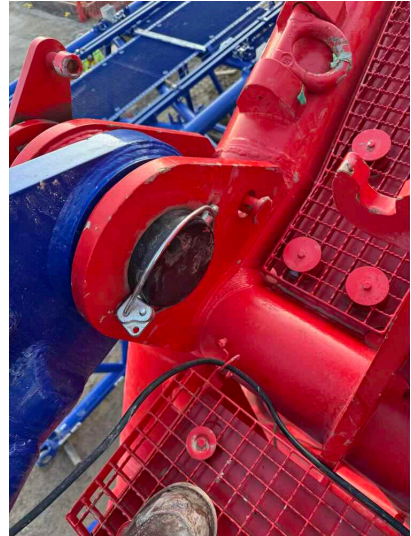


Photo 4



Photo 5



Photo 6

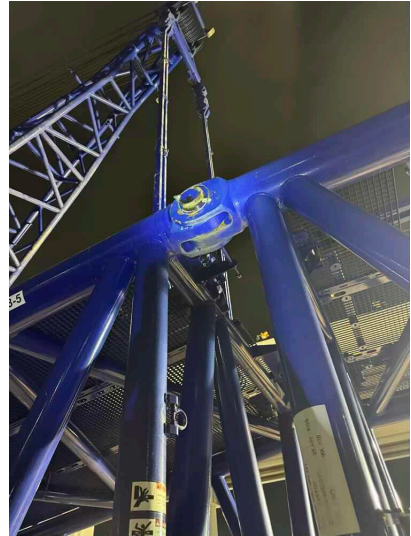


Photo 7

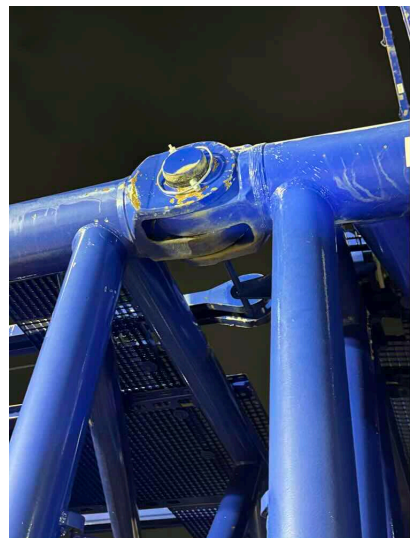


Photo 8

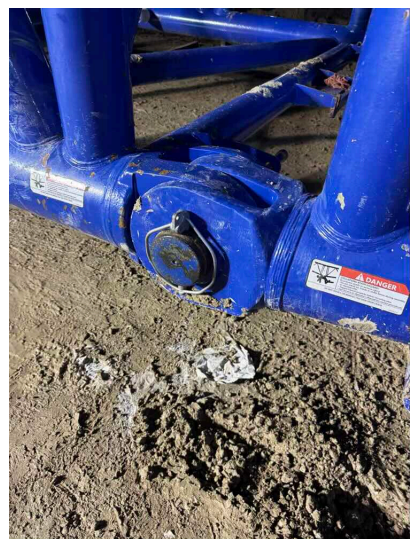


Photo 9

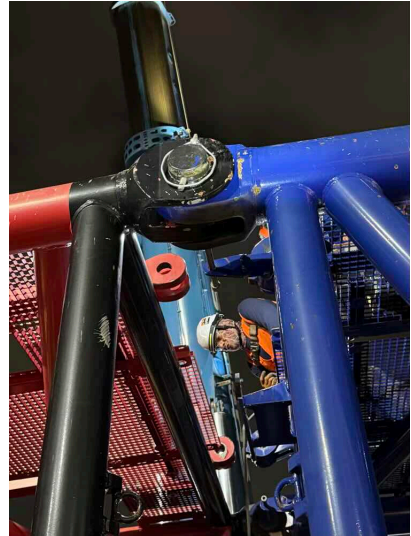


Photo 10

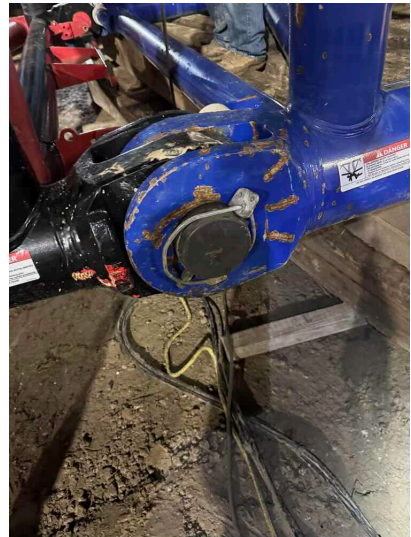


Photo 11

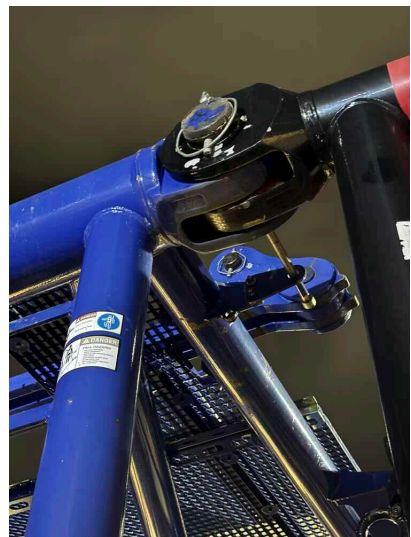


Photo 12



Photo 13

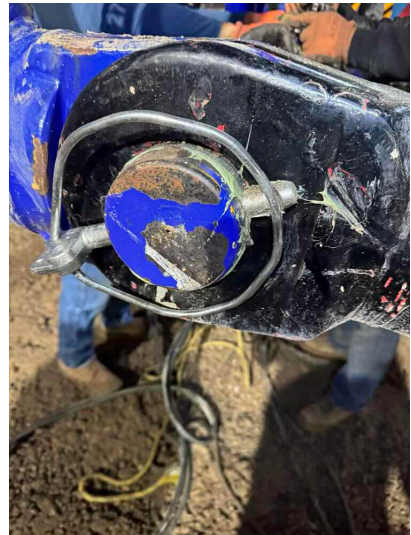


Photo 14

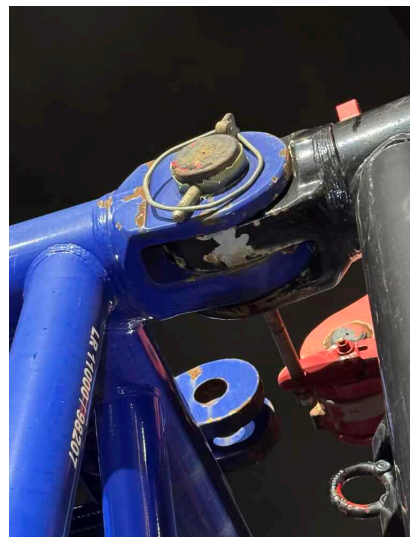


Photo 15

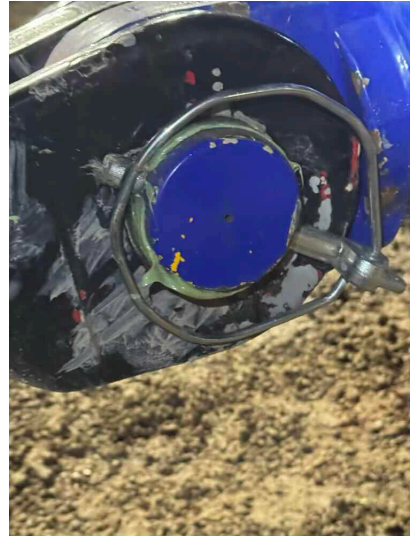


Photo 16

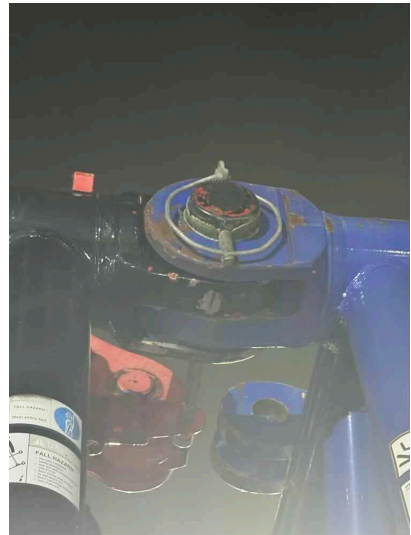


Photo 17



Photo 18

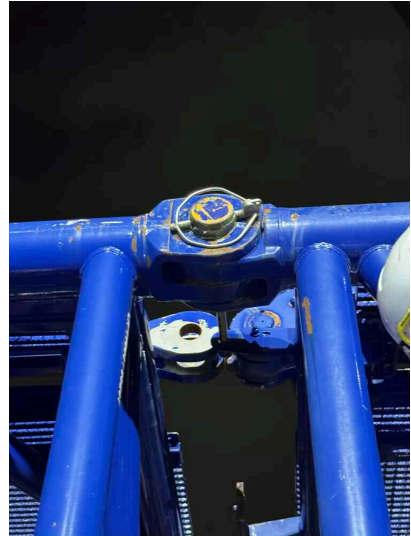


Photo 19



Photo 20

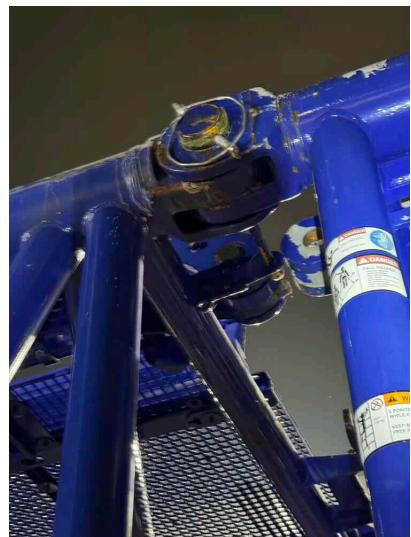


Photo 21



Photo 22

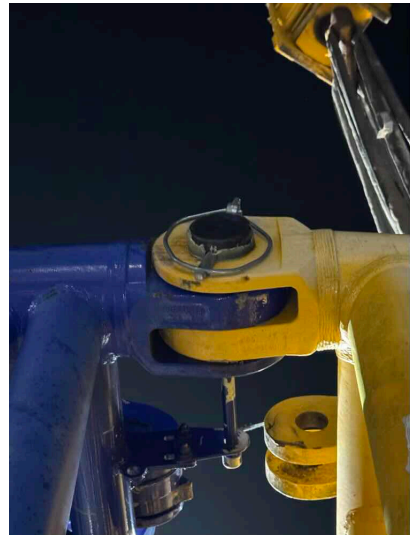


Photo 23

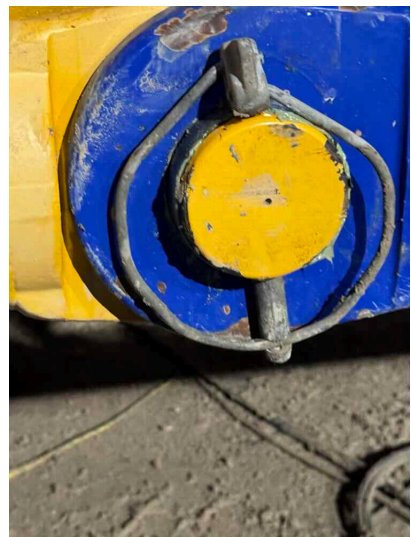
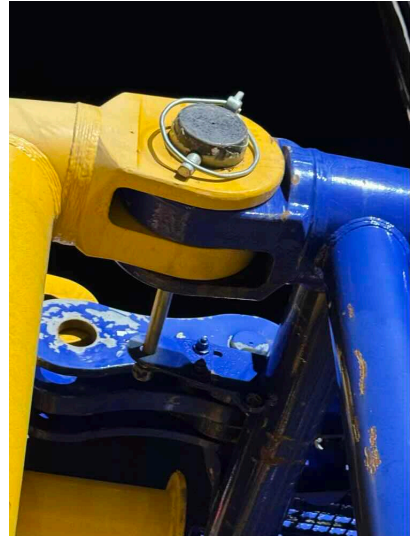


Photo 24



Q4: Is the Jib A-Frame (Queens Post) or WA-Frame 1 and WA-Frame 2 free of deformation, cracks, significantly corroded members, loose fasteners, cracked welds, and significant wear?

YES

No deficiencies observed during inspection.

Photo 1

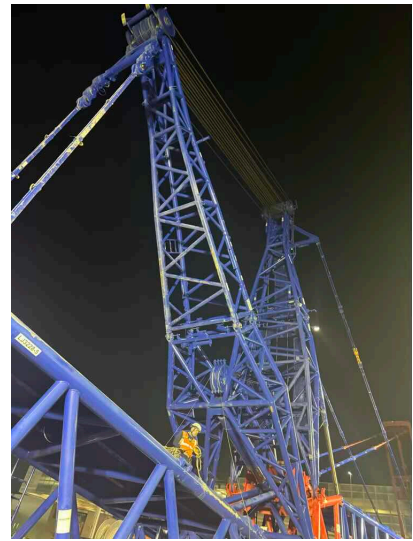


Photo 2

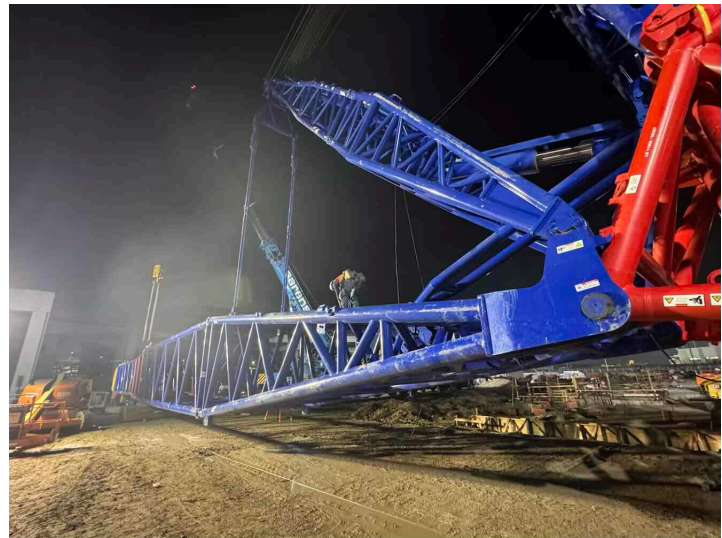


Photo 3

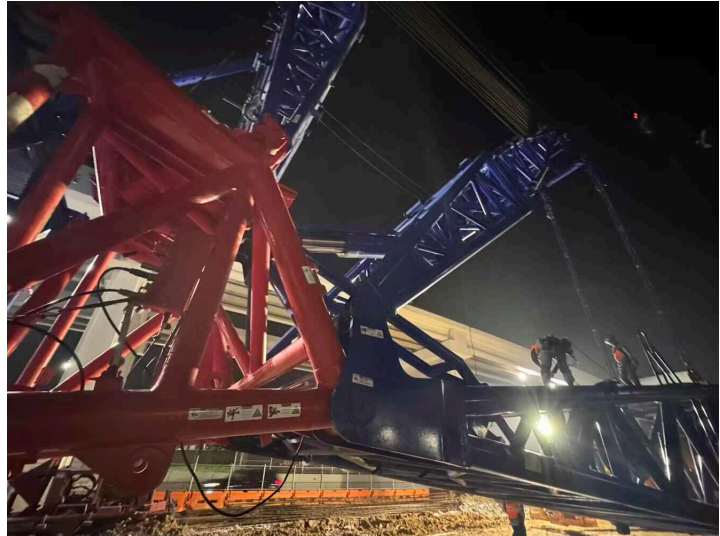


Photo 4

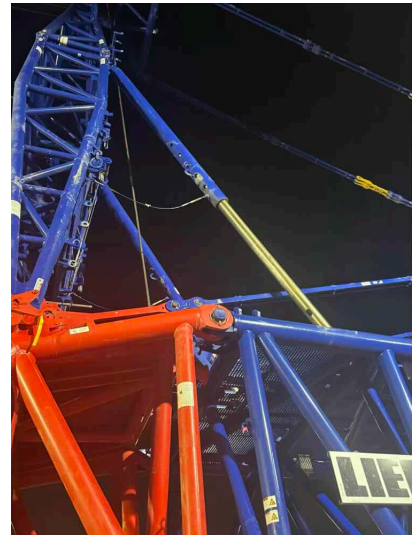
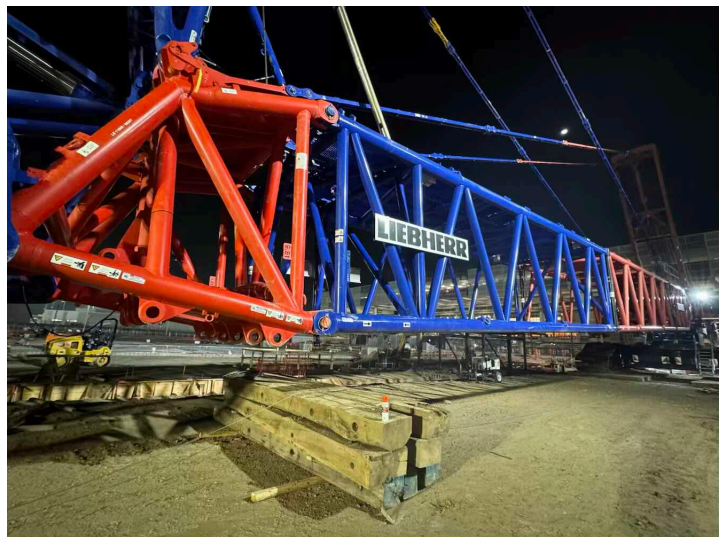


Photo 5

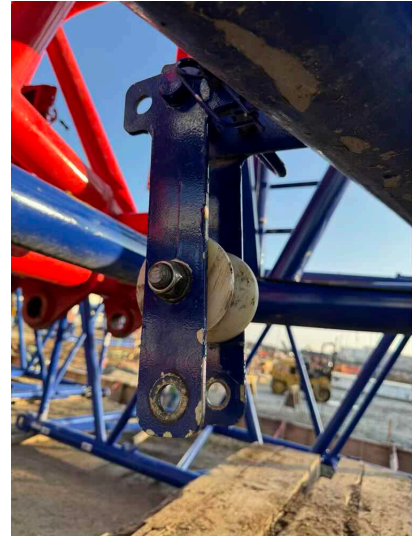


Q5: Are the Jib Stops free of deformation, cracks, significantly corroded members, loose fasteners, cracked welds, and significant wear?

NO

Roller for reeving cable missing a roller.

Photo 1



Q6: Are the Luffing Jib Stops free of deformation, cracks, significantly corroded members, loose fasteners, cracked welds, and significant wear?

YES

No deficiencies observed during inspection.

Photo 1

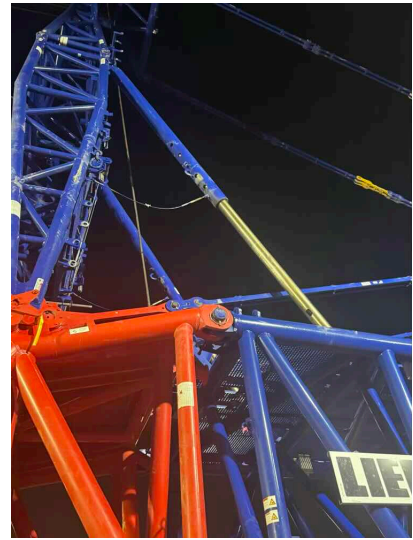


Photo 2



Q7: Are the Jib Forestay and Backstay Pendants free of deformation, cracks, significantly corroded members, loose fasteners, cracked welds, and significant wear?

YES

Q8: Are the WA-Frame 2 Relapse Cylinders free of deformation, cracks, significantly corroded members, loose fasteners, cracked welds, and significant wear? YES

No deficiencies observed during inspection.

Photo 1

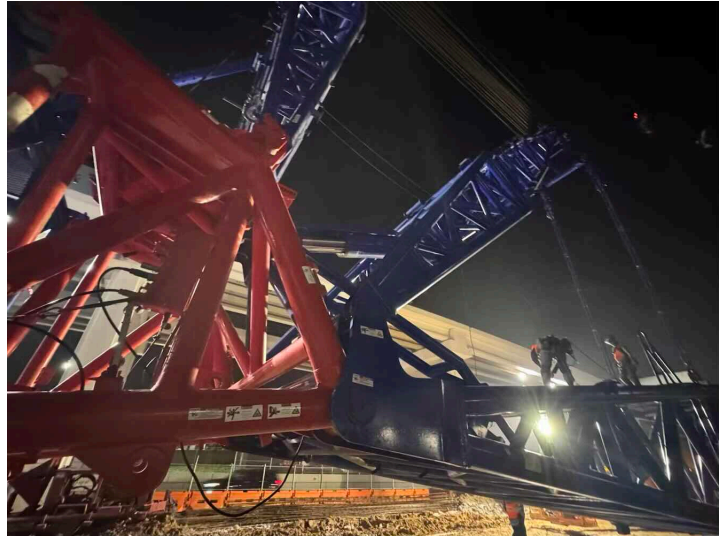


Photo 2



Q9: Are the Sheaves free from cracks and excessive wear? YES

Q10: Are the Sheaves free of excessive/abnormal side-to-side play? YES

Q11: Are the Sheave Grooves free of excessive cable lube and grease build-up? YES

Q12: Are the Wire Rope Retainer(s) present and installed correctly without significant wear?

YES

Properly installed and secured.

Photo 1

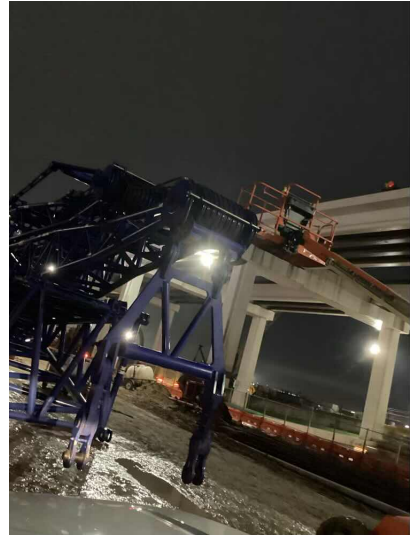
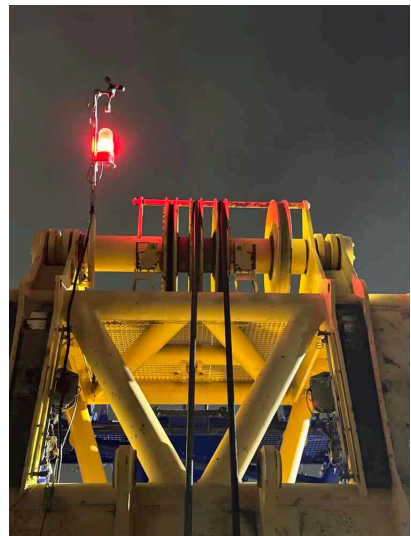


Photo 2



MAIN LOAD BLOCK AND HOOK

Q1: Is the Capacity Marking present, permanent, and legible?

YES

Legible.

Photo 1



Photo 2

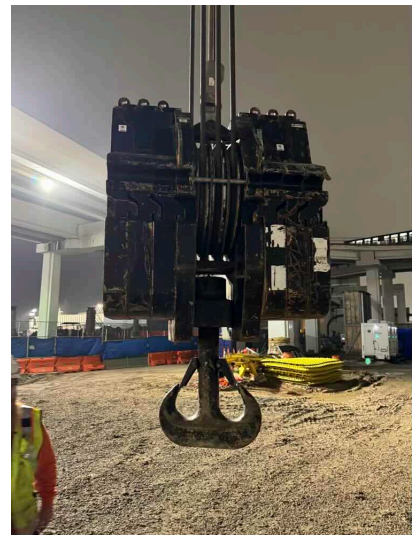


Photo 3

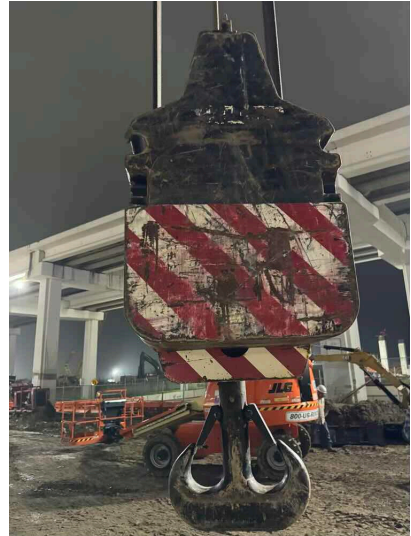


Photo 4

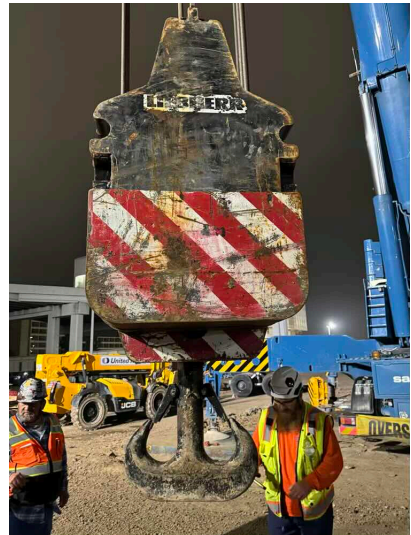
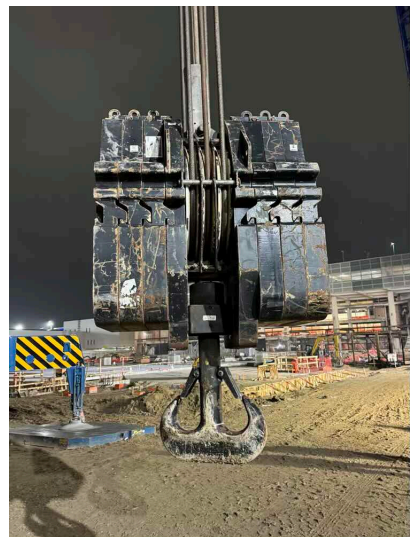


Photo 5



Q2: Is the Weight Marking present, permanent, and

YES



Assembly / Disassembly / Annual / Inspection Form

Dec 10, 2024

legible?

Q3: Are the Sheaves free from cracks and excessive wear? YES

Q4: Are the Sheaves free of excessive/abnormal side-to-side play? YES

Q5: Are the Sheave Grooves free of excessive cable lube and grease build-up? YES

Q6: Are the Wire Rope Retainer(s) present and installed correctly without significant wear?

YES

Properly installed and secured.

Photo 1

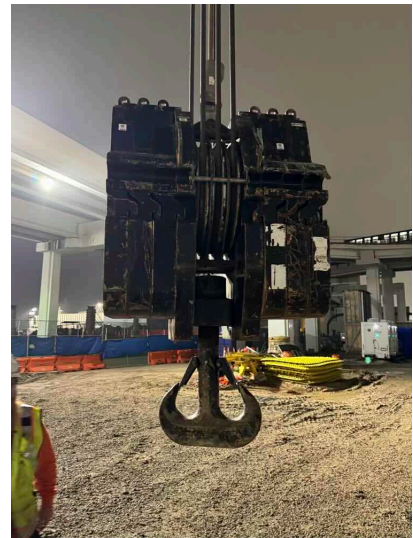
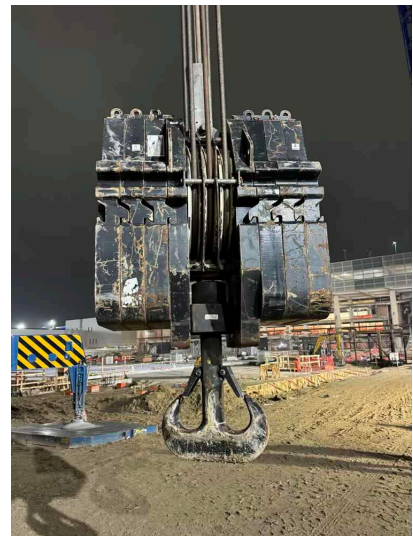


Photo 2



Q7: Are the Cheek Weights free of deformation, cracks, significantly corroded members, loose fasteners, and cracked welds?

YES

Q8: Are all Safety Latches present, working as intended, and free of significant wear?

YES

Q9: Is the Hook free of any visibly apparent bend or twist from the plane of the unbent hook (0° Hook Bend or Twist)?

YES



Assembly / Disassembly / Annual / Inspection Form

Dec 10, 2024

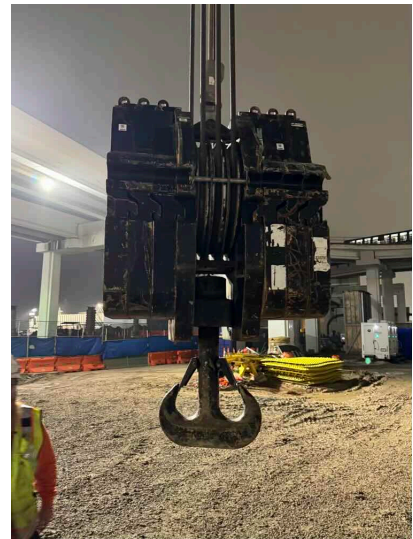
- | | |
|--|-----|
| Q10: Is the Hook Throat Opening free of any distortion causing an increase of 5% Hook Opening or ¼" Maximum from the manufacturer? | YES |
| Q11: Is the Hook Wear less than 10% of the original section dimension of the hook or its load pin? | YES |
| Q12: Is the Swivel free from cracks and excessive wear? | YES |
| Q13: Is the Swivel Bearing free from cracks and excessive wear? | YES |
| Q14: Is the Load Block Lubricated? | YES |

Q15: Is the Wedge Socket, End Fitting, and/or Termination free of deformation, cracks, significantly corroded members, loose fasteners, cracked welds, and significant wear?

YES

No deficiencies observed during inspection.

Photo 1



AUXILIARY BALL AND HOOK

Q1: Is the Capacity Marking present, permanent, and legible?

YES

Legible.

Photo 1



Photo 2

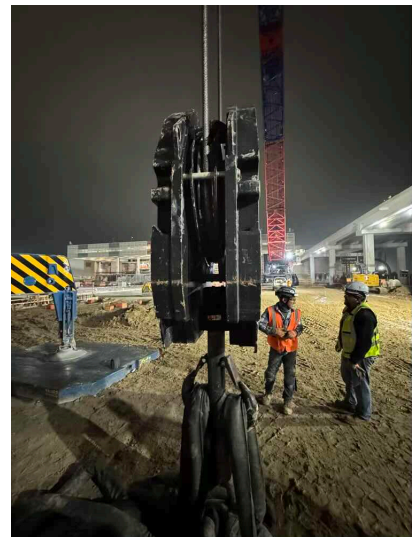


Photo 3

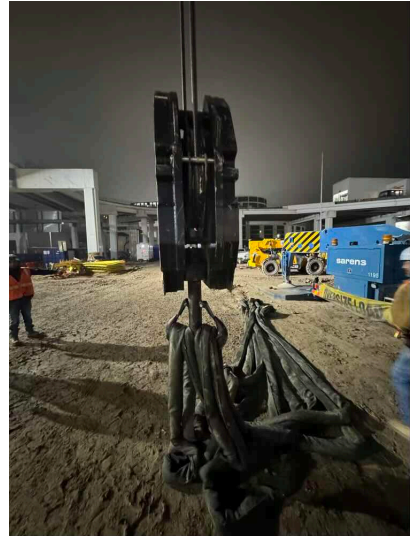


Photo 4

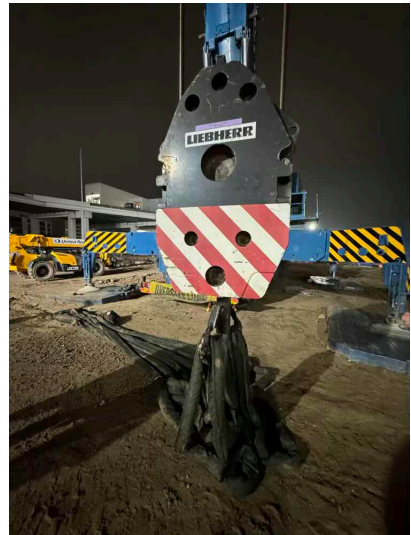
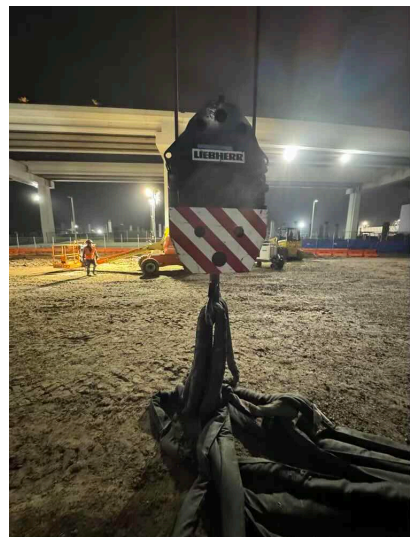


Photo 5



Q2: Is the Weight Marking present, permanent, and

YES



legible?

Q3: Are all Safety Latches present, working as intended, and free of significant wear? YES

Q4: Is the Hook free of any visibly apparent bend or twist from the plane of the unbent hook (0° Hook Bend or Twist)? YES

Q5: Is the Hook Throat Opening free of any distortion causing an increase of 5% Hook Opening or ¼" Maximum from the manufacturer? YES

Q6: Is the Hook Wear less than 10% of the original section dimension of the hook or its load pin? YES

Q7: Is the Swivel free from cracks and excessive wear? YES

Q8: Is the Swivel Bearing free from cracks and excessive wear? YES

Q9: Is the Hook Ball Lubricated? YES

Q10: Is the Wedge Socket, End Fitting, and/or Termination free of deformation, cracks, significantly corroded members, loose fasteners, cracked welds, and significant wear? YES



NO LOAD OPERATIONAL TEST

Q1: Was a No-Load Operational Test Performed?	YES
Q2: Was a Load Test (Hoisting from Boom) Performed?	N/A
Q3: Was a Load Test (Hoisting from Jib) Performed?	N/A

WIRE ROPE - MAIN HOIST (W1)

Q1: What is the Type of Wire Rope currently installed?

Rotation Resistant.

Q2: What is the advertised Size (Diameter) of the Wire Rope currently installed?

32mm

Q3: What is the Construction of the Wire Rope currently installed?

Steel Rope.

Q4: Is the End Connection applied and installed correctly? YES

Q5: Is the Main Hoist Wire Rope free of significant distortion of the wire rope structure such as kinking, crushing, unstranding, birdcaging, signs of core failure, steel core protrusion between the outer strands, corrosion, electric arc damage, improperly applied connections, broken wires, or a diameter reduction of 5% from the nominal diameter? YES

Q6: Is the Wire Rope Lubricated? YES

Q7: Has the Wire Rope Diameter been measured in the area where the wire rope is likely to be used during the shift?

YES

32.97 by 32.78

Photo 1

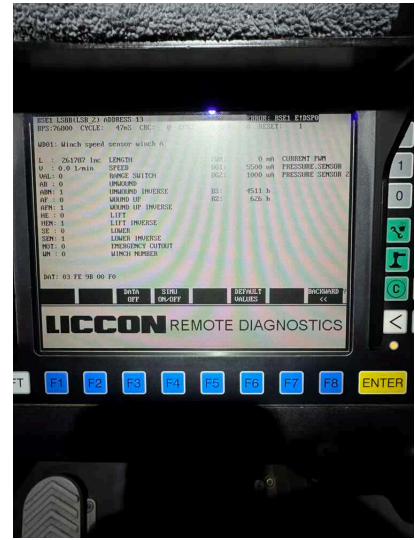


Photo 2

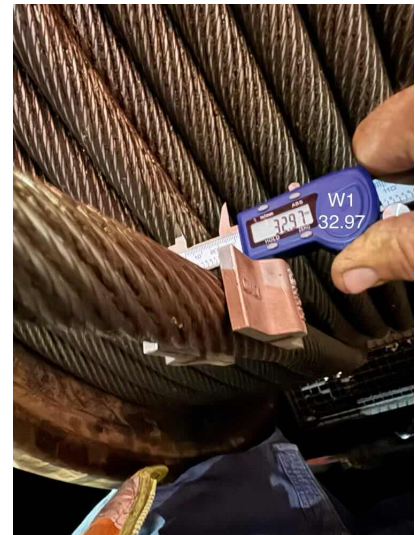


Photo 3

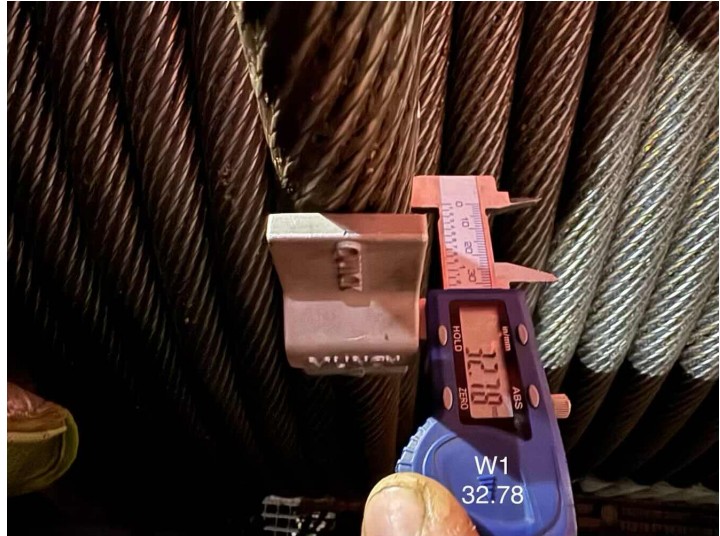


Photo 4



WIRE ROPE - AUXILIARY HOIST (W2)

Q1: What is the Type of Wire Rope currently installed?

Rotation resistant.

Q2: What is the advertised Size (Diameter) of the Wire Rope currently installed?

32mm

Q3: What is the Construction of the Wire Rope currently installed?

Steel Rope.

Q4: Is the End Connection applied and installed correctly? YES

Q5: Is the Auxiliary Hoist Wire Rope free of significant distortion of the wire rope structure such as kinking, crushing, unstranding, birdcaging, signs of core failure, steel core protrusion between the outer strands, corrosion, electric arc damage, improperly applied connections, broken wires, or a diameter reduction of 5% from the nominal diameter? YES

Q6: Is the Wire Rope Lubricated? YES

Photo 3



Photo 4



WIRE ROPE - BOOM HOIST (W4)

Q1: What is the Type of Wire Rope currently installed?

RRL

Q2: What is the advertised Size (Diameter) of the Wire Rope currently installed?

32mm

Q3: What is the Construction of the Wire Rope currently installed?

Steel Rope.

Q4: Is the End Connection applied and installed correctly?

YES

Q5: Is the Boom Hoist Wire Rope free of significant distortion of the wire rope structure such as kinking, crushing, unstranding, birdcaging, signs of core failure, steel core protrusion between the outer strands, corrosion, electric arc damage, improperly applied connections, broken wires, or a diameter reduction of 5% from the nominal diameter?

YES

Q6: Is the Wire Rope Lubricated?

NO

Cable is pretty dry.

Photo 1

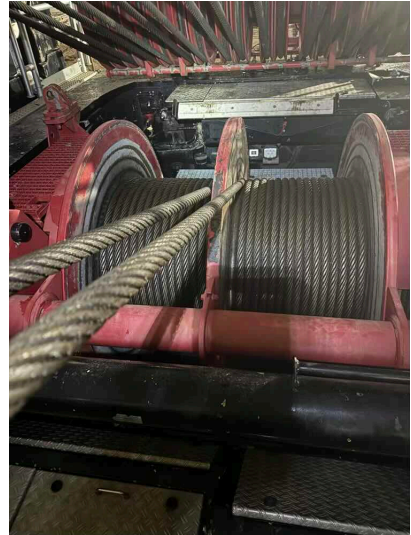


Photo 2



Q7: Has the Wire Rope Diameter been measured in the area where the wire rope is likely to be used during the shift?

YES

Left 32.57 by 32.39 / Right 32.40 by 32.38

Photo 1

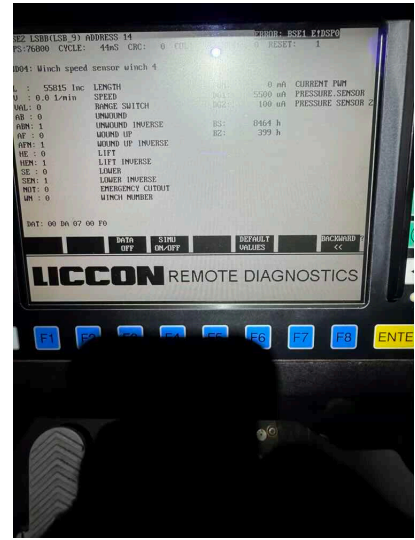


Photo 2

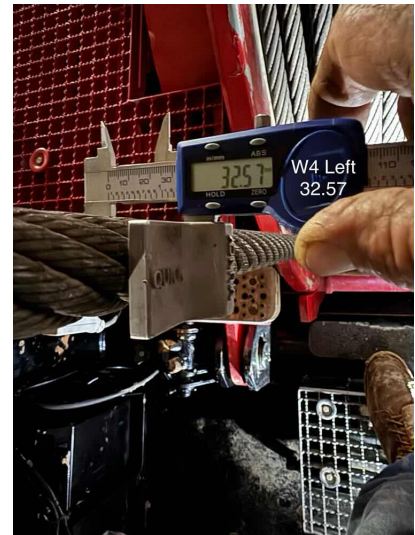


Photo 3



Photo 4



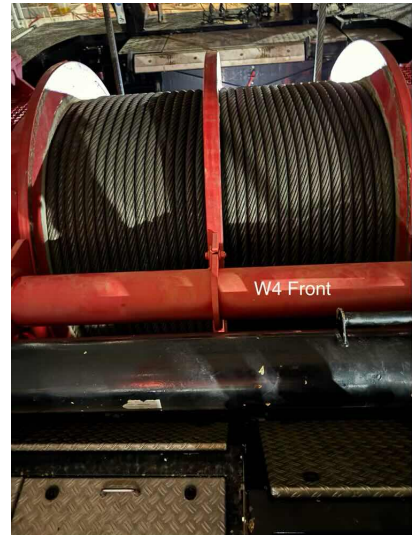
Photo 5



Photo 6



Photo 7



Q8: Has the Boom Hoist Wire Rope been measured on the 2nd layer with the SA Frame unloaded and forward at approximately 135° to check the flattening of the Wire Rope caused by a Long Main Boom configuration without the use of a Derrick?

YES

Left 32.82 by 32.67 / Right 32.97 by 33.02
Could not find any significant deviation.

Photo 1



Photo 2



Photo 3



Photo 4

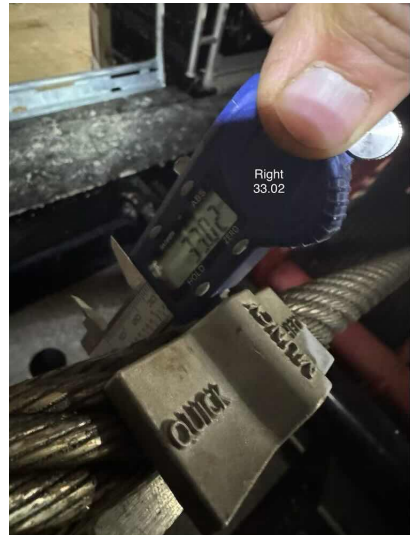
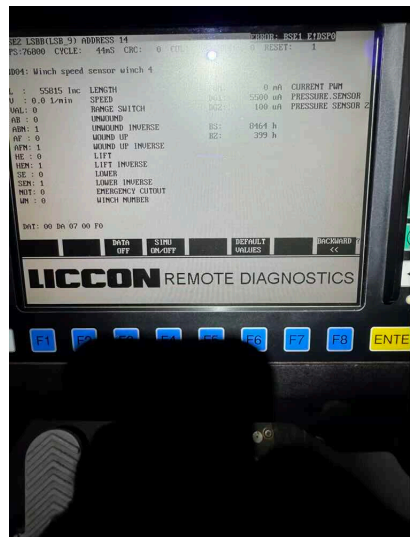


Photo 5



WIRE ROPE - LUFFING HOIST (W5)

Q1: What is the Type of Wire Rope currently installed?

RRL

Q2: What is the advertised Size (Diameter) of the Wire Rope currently installed?

32mm

Q3: What is the Construction of the Wire Rope currently installed?

Steel Rope.

Q4: Is the End Connection applied and installed correctly?

YES

End connection good. Winch properly installed and secured.

Photo 1



Photo 2



Photo 3



Photo 4

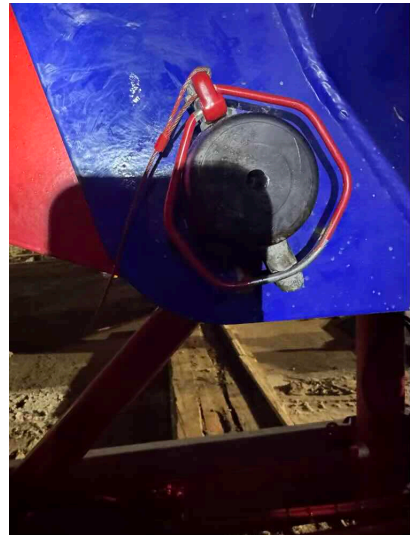


Photo 5

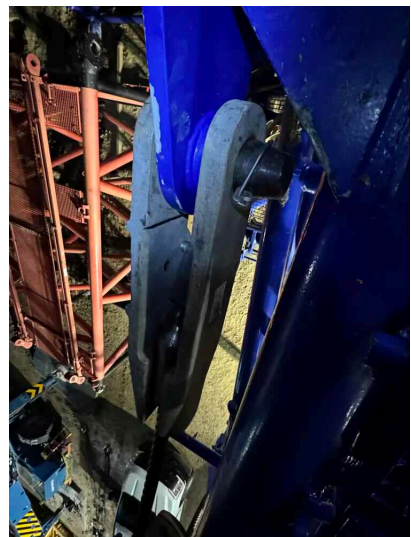


Photo 6

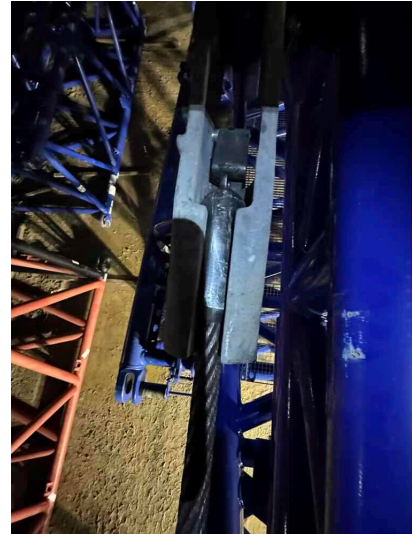


Photo 7



Q5: Is the Luffing Hoist Wire Rope free of significant distortion of the wire rope structure such as kinking, crushing, unstranding, birdcaging, signs of core failure, steel core protrusion between the outer strands, corrosion, electric arc damage, improperly applied connections, broken wires, or a diameter reduction of 5% from the nominal diameter?

YES

Q6: Is the Wire Rope Lubricated?

YES

Q7: Has the Wire Rope Diameter been measured in the area where the wire rope is likely to be used during the shift?

YES

32.90 by 32.91

Photo 1

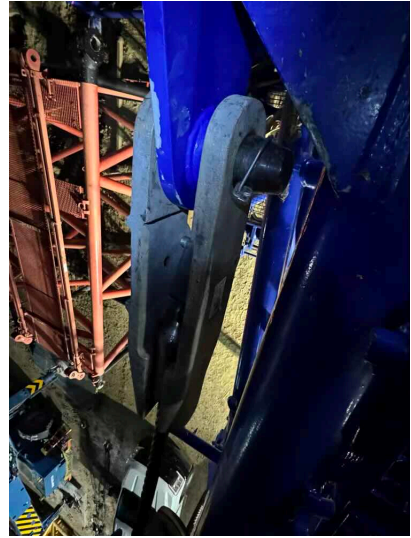


Photo 2

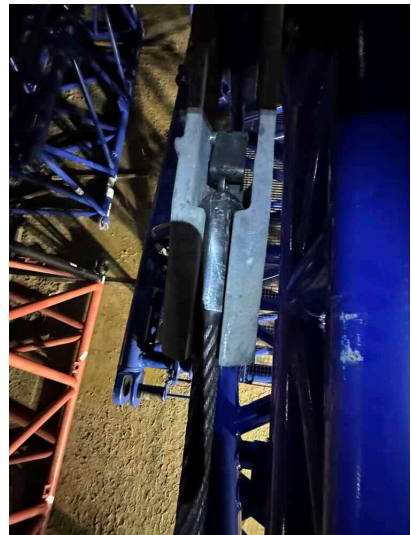


Photo 3

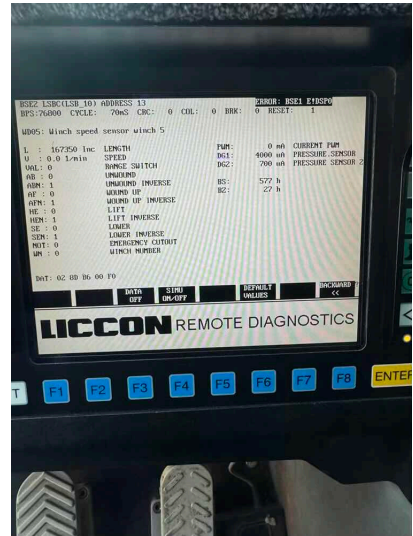


Photo 4



Photo 5



Photo 6



Photo 7





GUY RODS

Q1: Are the Guy Rods free of deformation, ductile deformation (i.e., folding, stretching, shearing), cracks, dents, significantly corroded members, loose fasteners, cracked welds, and significant wear? YES

Q2: Are the Guy Rods free of elongation? YES

Q3: Is the Guy Rod bore, pins, and pin retainers free of significant wear? YES