

Pos. Item	Description		Page
1 967746908	ROD CPL.	6M	
2 967743808	ROD CPL.	12 M	
5 967846208	PULL ROD	3.3M	
6 917368808	MEASURING PLATE	3000 KN	34
7 967846608	PULL TAB WITH SIGN	0.4M	
8 967845508	DRAW SHACKLE	0.7M	
9 967897608	PULL ROD	3.5M	
11 968026108	DRAWBAR PRE-ASS	6.0M	
12 968026208	PULL ROD	3.9M	
13 967704008	ROD CPL.	12 M	
15 968026008	PULL ROD	5.765M	
16 968242208	PULL ROD	6.050 M	
18 968190108	PULL ROD	2.5M	
19 968190208	PULL ROD	6.005M	
86 96038420	RODS / PULL RODS	7.35M	
87 96035533	BRACKET CPL.		
88 96035475	ROTATING SHAFT		
89 96037814	GUY ROPE CPL.	66X8.5M	
90 96037810	GUY ROPE CPL.	66X18M	
1000 98045570	RODS/ PULL RODS LR 11000	SL8DF2B	

Pos. Item	Description		Page
76 919219108	MEASURING PLATE	1250 KN	19
77 96037041	DRAW SHACKLE	0.6M	
78 96037042	DRAW SHACKLE	0.230M	
79 97122954	FIBRE TENSIONING ROPE	66X13.1M	
80 96035525	DRAW SHACKLE		
81 96037332	GUY ROPE CPL.	66X2.725M	
82 96037007	GUY ROPE CPL.	66X5.45M	
83 96037255	GUY ROPE CPL.	66X10.9M	
84 96039026	DRAW SHACKLE	0.930M	
85 96039027	DRAW SHACKLE	1.630M	
1000 98043732	RODS/ PULL RODS LR 11000	F2	

PROJECT:
LR11000 SL8DF2B 132+12

LOCATION: -----
BUCKNER CONTACT: Dan Ives, PE
Dani@BucknerHeavylift.com
LIFT PLAN BY: Dan Ives, PE
Dani@BucknerHeavylift.com

DRAWING NOTES:
Rod Plans

FILE: C:\Users\Dan Ives\OneDrive - Buckner Heavylift
Cranes\Engineering\Drawings\BHL\Buckner\Build
Sheets\LR 11000\LR 11000 - SL8DF2B 132m + 12m
CREATED: 04.15.2024 12:10:40 PM
EDITING TIME: 10h18m FILE SIZE: 8979.55Kb
PAPER SIZE: ANSI B (17.00 x 11.00 Inches)
SAVED: 04.15.2024 @ 12:47:24 PM
PLOTTED: 04.15.2024 @ 12:47:27 PM

Revisions

All Sheets Same Revision Level

Rev.	Date	Description
000	04.15.2024	Preliminary Planning & Initial Layout
001	----	----
002	----	----
003	----	----
004	----	----
005	----	----
006	----	----
007	----	----
008	----	----
009	----	----
010	----	----

SHEET: 003 OF 011



18.6.2021	098260 (LR 11000) RODS/ PULL RODS LR 11000 SL8DF2B	96042304 Page: 63
-----------	---	----------------------

14.5.2019	LR 11000 (098251) RODS/ PULL RODS LR 11000 F2	96039268 Page: 11
-----------	--	----------------------

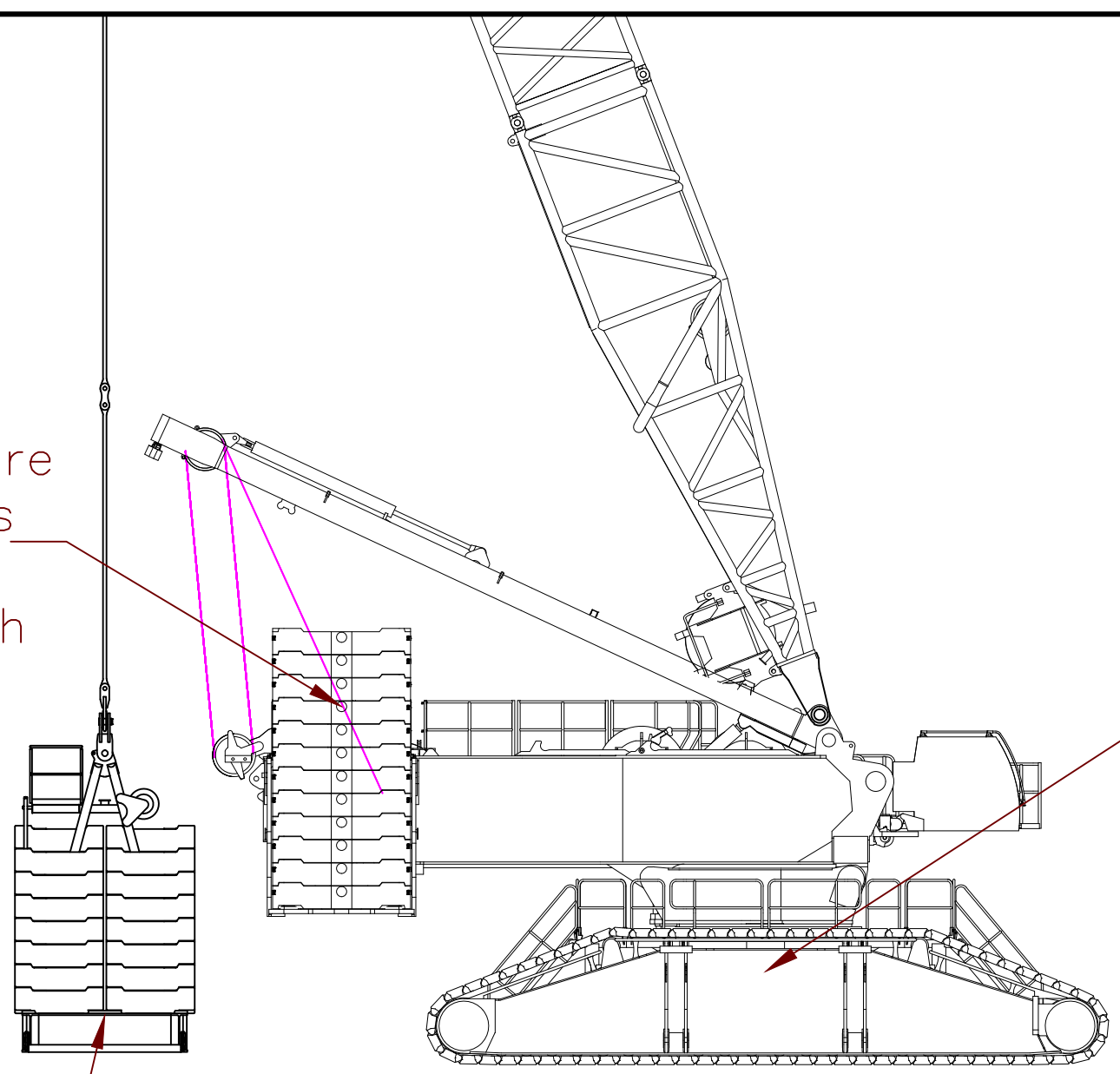
Superstructure
250 tonnes
24 rocks
10 ton each

Carbody
130 tonnes
12 rocks
10 ton each

Tray
300 tonnes total

For standard tray: 29
rocks

For LTR wide tray: 10
rocks



PROJECT:
LR11000 SL8DF2B 132+12

LOCATION: -----
BUCKNER CONTACT: Dan Ives, PE
Dani@BucknerHeavylift.com
LIFT PLAN BY: Dan Ives, PE
Dani@BucknerHeavylift.com

DRAWING NOTES:
Counterweight Arrangement

FILE: C:\Users\Dan Ives\OneDrive - Buckner Heavylift
Cranes\Engineering\Drawings\BHL\Buckner\Build
Sheets\LR 11000\LR 11000 - SL8DF2B 132m + 12m
CREATED: 04.15.2024 12:10:40 PM
EDITING TIME: 10h18m FILE SIZE: 8979.55Kb
PAPER SIZE: ANSI B (17.00 x 11.00 Inches)
SAVED: 04.15.2024 12:47:24 PM
PLOTTED: 04.15.2024 12:47:28 PM

Revisions

All Sheets Same Revision Level

Rev.	Date	Description
000	04.15.2024	Preliminary Planning & Initial Layout
001	----	----
002	----	----
003	----	----
004	----	----
005	----	----
006	----	----
007	----	----
008	----	----
009	----	----
010	----	----

SHEET: 004 OF 011



1 Crane operation with 2 hoist ropes F = 230 kN and d = 1 1/4" (32 mm) (EST1)

1.1 Auxiliary weights



WARNING

Incorrect assembly and disassembly of the auxiliary weights!
Death, severe bodily injuries, property damage.

- ▶ Assemble / disassemble the auxiliary weights according to the operating instructions, see the Crane operating instructions, chapter 5.19.

The net weight of a hook block can be increased using auxiliary weights. The net weight of the auxiliary weights is specified to the side on the respective auxiliary weight.

The following auxiliary weights are possible:

Auxiliary weights		
Net weight	1.0 t	2205 lb

Possible auxiliary weights

1.2 Double hook block 320 / 160 DM (SWL 320 t (705600 lb))

Load		Rope pulleys	Maximum reeving	Net weight without auxiliary weight	
315.4 t	695300 lb	2 x 3	2 x 7	4.7 t	10360 lb

Double hook block 320 / 160 DM

Hook block with installed auxiliary weights	Net weight	
2 auxiliary weights	6.7 t	14770 lb
4 auxiliary weights	8.7 t	19180 lb
6 auxiliary weights	10.7 t	23590 lb
8 auxiliary weights	12.7 t ¹⁾	28000 lb ¹⁾

Auxiliary weights

1) Maximum permissible net weight of the hook block.

1.3 Double hook block 650 / 325 DMZ (SWL 650 t (1433250 lb))

There are two versions of this double hook block. Both versions differ in shape and net weight.

1.3.1 Version 1

Load		Rope pulleys	Maximum reeving	Net weight without auxiliary weight	
649.6 t	1432200 lb	2 x 7	2 x 15	14.0 t	30870 lb

Double hook block 650 / 325 DMZ

LWE/423501-1B-02/en

PROJECT:
LR11000 SL8DF2B 132+12

LOCATION: -----
BUCKNER CONTACT: Dan Ives, PE
Dani@BucknerHeavylift.com
LIFT PLAN BY: Dan Ives, PE
Dani@BucknerHeavylift.com

DRAWING NOTES:
Hook Block

FILE: C:\Users\Dan Ives\OneDrive - Buckner Heavylift\Cranes\Engineering\Drawings\BHL\Buckner\Build Sheets\LR 11000\LR 11000 - SL8DF2B 132m + 12m
CREATED: 04.15.2024 12:47:28 PM
EDITING TIME: 10h18m FILE SIZE: 8979.55Kb
PAPER SIZE: ANSI B (17.00 x 11.00 Inches)
SAVED: 04.15.2024 12:47:24 PM
PLOTTED: 04.15.2024 12:47:28 PM

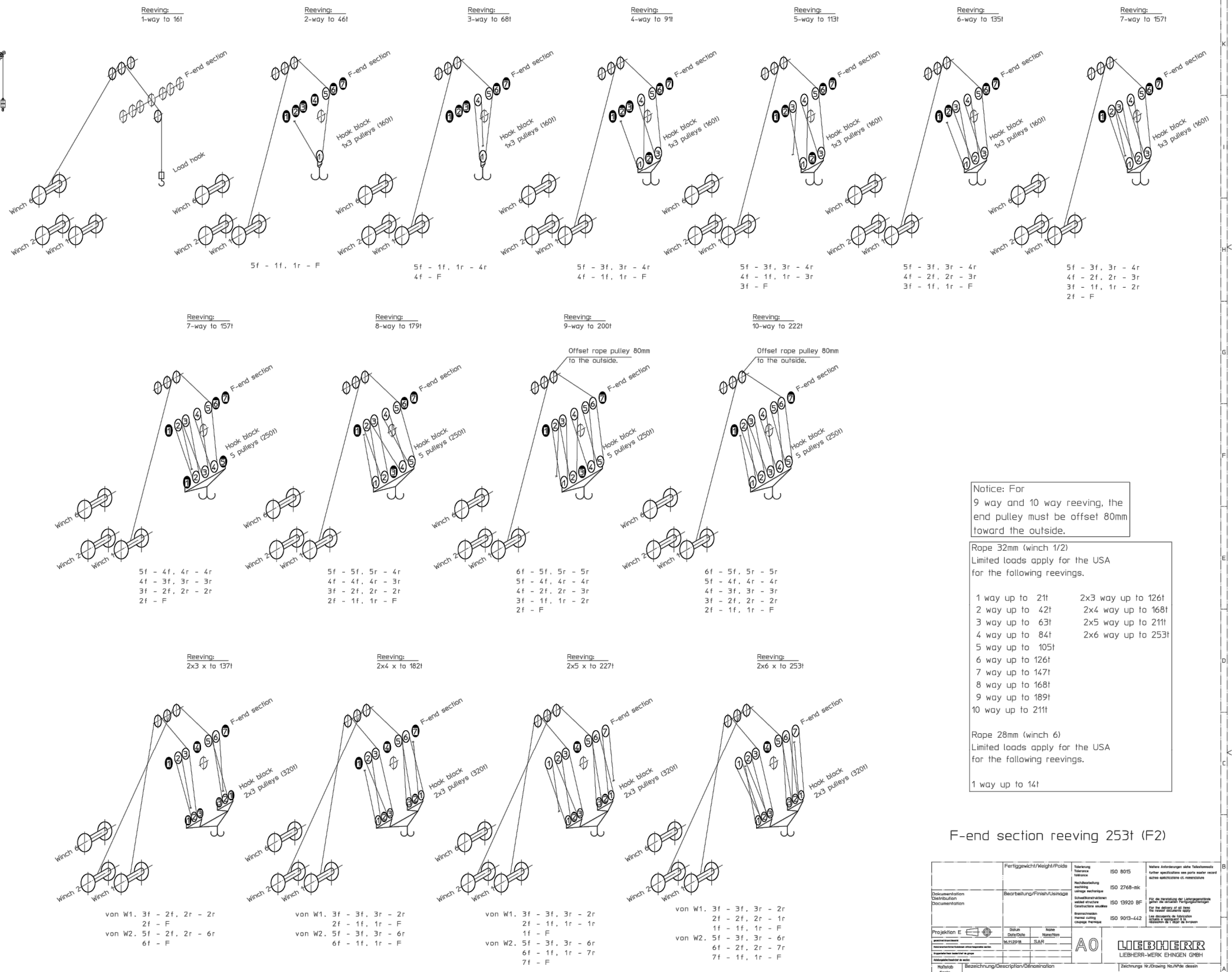
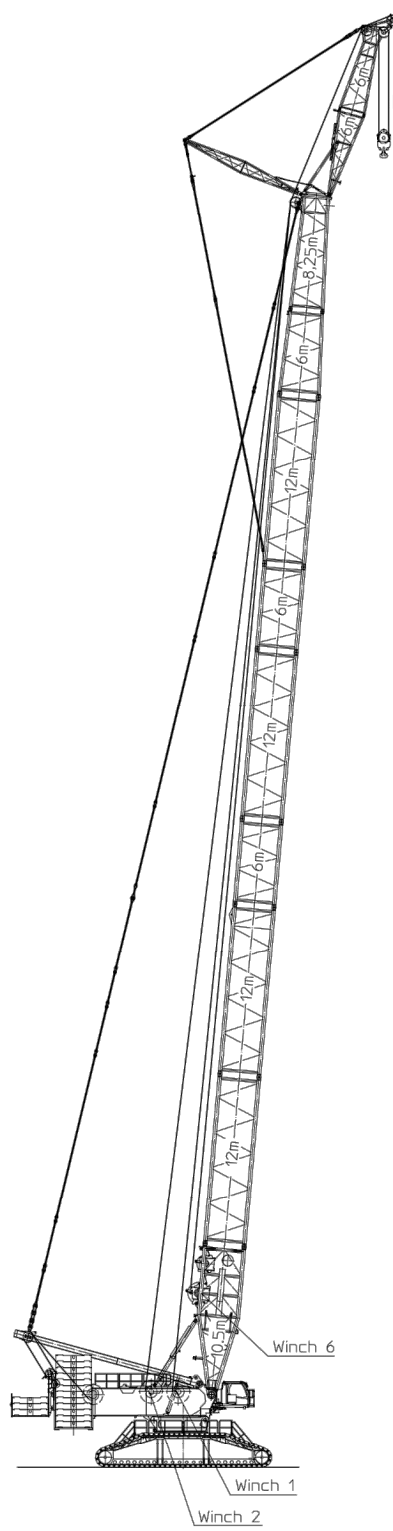
Revisions

All Sheets Same Revision Level

Rev.	Date	Description
000	04.15.2024	Preliminary Planning & Initial Layout
001	----	----
002	----	----
003	----	----
004	----	----
005	----	----
006	----	----
007	----	----
008	----	----
009	----	----
010	----	----

SHEET: 005 OF 011

BUCKNER
HEAVYLIFT CRANES



Notice: For 9 way and 10 way reeving, the end pulley must be offset 80mm toward the outside.

Rope 32mm (winch 1/2)
Limited loads apply for the USA for the following reeving.

- 1 way up to 21t
- 2 way up to 42t
- 3 way up to 63t
- 4 way up to 84t
- 5 way up to 105t
- 6 way up to 126t
- 7 way up to 147t
- 8 way up to 168t
- 9 way up to 189t
- 10 way up to 211t
- 2x3 way up to 126t
- 2x4 way up to 168t
- 2x5 way up to 211t
- 2x6 way up to 253t

Rope 28mm (winch 6)
Limited loads apply for the USA for the following reeving.

- 1 way up to 14t

F = Fixpoint = Festpunkt
f = front = vorne
r = rear = hinten

Fertiggewicht/Weight/Poids		Technische Zeichnung		ISO 8015
Bearbeitung/Finish/Usinage		Nachbearbeitung		ISO 2768-mk
Dokumentation		Dokumentation		ISO 15920 BF
Projektion E		Scale		1:250
REEVING PLAN		F2-END SECTION		
1668-722.00.014-000		9804 3912		

PROJECT:
LR11000 SL8DF2B 132+12

LOCATION: -----
BUCKNER CONTACT: Dan Ives, PE
Dani@BucknerHeavylift.com
LIFT PLAN BY: Dan Ives, PE
Dani@BucknerHeavylift.com

DRAWING NOTES:
Reeving Plan

FILE: C:\Users\Dan Ives\OneDrive - Buckner Heavylift\Cranes\Engineering\Drawings\BHL\Buckner\Build Sheets\LR 11000\LR 11000 - SL8DF2B 132m + 12m
CREATED: 04.15.2024 12:47:24 PM
EDITING TIME: 10h18m FILE SIZE: 8979.55Kb
PAPER SIZE: ANSI B (17.00 x 11.00 Inches)
SAVED: 04.15.2024 12:47:24 PM
PLOTTED: 04.15.2024 12:47:28 PM

Revisions		
All Sheets Same Revision Level		
Rev.	Date	Description
000	04.15.2024	Preliminary Planning & Initial Layout
001	----	----
002	----	----
003	----	----
004	----	----
005	----	----
006	----	----
007	----	----
008	----	----
009	----	----
010	----	----

SHEET: 006 OF 011
BUCKNER
HEAVY LIFT CRANES

SL8DF2B – operation, turntable ballast 250t / central ballast 130t
SL8F2: F-connector head

aat_235_070_00001_00_001
Page: 1 of 6

On crawlers 9.6m x 9.2m x 2.0m
Ground slope: maximum 0.3°
Without mechanical auxiliary support

System: S 3228.40/25/20/15
D 2825.25/20
F 2318.10

Wind speeds:

maximum 9.0m/s: for all boom lengths and wind direction 360°.

maximum 12.8m/s: for boom lengths below 140m and wind direction 360°. With a total boom length above 140m (highlighted in gray in the chart), erection / take-down is only permissible with wind from the front or from the rear on the boom. The permissible inflow angle range is ±25°.

SL8DF2B DR 12m DBR 12m			Permissible weight of the hook block [t] on the F2-boom											
			For derrick ballast [t] for derrick radius (DR) 12m / derrick ballast radius (DBR) 12m											
			0	50	100	150	200	250	300	350	400	450		
Main boom length [m]	SL8-102	F2 [m]	12	-	-	5.3	12	18	•	•	•	•	•	
			15	-	-	4	10	17	•	•	•	•	•	
			18	-	-	3.3	9.8	16	•	•	•	•	•	
			21	-	-	2.2	8.4	14	•	•	•	•	•	
			24	-	-	-	7.6	13	19	•	•	•	•	
			27	-	-	-	6.3	12	18	•	•	•	•	
			30	-	-	-	5.9	11	17	•	•	•	•	
			33	-	-	-	4.6	10	16	•	•	•	•	
			36	-	-	-	3.9	9.4	15	•	•	•	•	
			39	-	-	-	2.7	8.1	13	19	•	•	•	
Main boom length [m]	SL8-108	F2 [m]	12	-	-	-	5.3	11	18	•	•	•	•	
			15	-	-	-	4.1	10	16	•	•	•	•	
			18	-	-	-	3.4	9.5	15	•	•	•	•	
			21	-	-	-	2.2	8.2	14	•	•	•	•	
			24	-	-	-	-	7.4	13	19	•	•	•	•
			27	-	-	-	-	6.1	11	17	•	•	•	•
			30	-	-	-	-	5.7	11	16	•	•	•	•
			33	-	-	-	-	4.5	9.9	15	•	•	•	•
			36	-	-	-	-	3.7	9	14	19	•	•	•
			39	-	-	-	-	2.5	7.7	13	18	•	•	•
Main boom length [m]	SL8-114	F2 [m]	12	-	-	-	-	4.2	10	16	•	•	•	•
			15	-	-	-	-	3	9	14	•	•	•	•
			18	-	-	-	-	2.4	8.2	14	19	•	•	•
			21	-	-	-	-	-	6.9	12	18	•	•	•
			24	-	-	-	-	-	6.1	11	17	•	•	•
			27	-	-	-	-	-	4.9	10	15	•	•	•
			30	-	-	-	-	-	4.5	9.9	15	•	•	•
			33	-	-	-	-	-	3.3	8.6	13	19	•	•
			36	-	-	-	-	-	2.6	7.7	12	17	•	•
			39	-	-	-	-	-	-	6.5	11	16	19	•

- Hook block weight up to 20t permissible
- Erection not permissible

It may be necessary to use a greater hook block weight than is indicated here. See the load chart manual: Determination of hoist rope reeving and hook block. This heavier hook block must be carried along on the ground during erection / take-down, or the auxiliary weights must be attached after erection and removed before take down.

SL8DF2B – operation, turntable ballast 250t / central ballast 130t
SL8F2: F-connector head

aat_235_070_00001_00_001
Page: 2 of 6

On crawlers 9.6m x 9.2m x 2.0m
Ground slope: maximum 0.3°
Without mechanical auxiliary support

System: S 3228.40/25/20/15
D 2825.25/20
F 2318.10

Wind speeds:

maximum 9.0m/s: for all boom lengths and wind direction 360°.

maximum 12.8m/s: for boom lengths below 140m and wind direction 360°. With a total boom length above 140m (highlighted in gray in the chart), erection / take-down is only permissible with wind from the front or from the rear on the boom. The permissible inflow angle range is ±25°.

SL8DF2B DR 12m DBR 12m			Permissible weight of the hook block [t] on the F2-boom										
			For derrick ballast [t] for derrick radius (DR) 12m / derrick ballast radius (DBR) 12m										
			0	50	100	150	200	250	300	350	400	450	
Main boom length [m]	SL8-120	F2 [m]	12	-	-	-	-	-	3.7	9.5	15	•	•
			15	-	-	-	-	-	2.5	8.2	13	19	•
			18	-	-	-	-	-	-	7.4	13	18	•
			21	-	-	-	-	-	-	6.2	11	17	•
			24	-	-	-	-	-	-	5.4	10	16	19
			27	-	-	-	-	-	-	4.2	9.4	14	17
			30	-	-	-	-	-	-	3.8	9	14	17
			33	-	-	-	-	-	-	2.7	7.7	12	15
			36	-	-	-	-	-	-	-	6.8	11	14
			39	-	-	-	-	-	-	-	5.6	10	13
Main boom length [m]	SL8-126	F2 [m]	12	-	-	-	-	-	-	7.7	12	16	
			15	-	-	-	-	-	-	6.5	11	15	
			18	-	-	-	-	-	-	5.7	10	14	
			21	-	-	-	-	-	-	4.5	9.6	13	
			24	-	-	-	-	-	-	3.8	8.7	12	
			27	-	-	-	-	-	-	2.6	7.4	10	
			30	-	-	-	-	-	-	2.3	7.1	10	
			33	-	-	-	-	-	-	-	5.9	8.9	
			36	-	-	-	-	-	-	-	5.1	8	
			39	-	-	-	-	-	-	-	3.9	6.9	
Main boom length [m]	SL8-132	F2 [m]	12	-	-	-	-	-	-	-	6	9.4	
			15	-	-	-	-	-	-	-	4.7	8.2	
			18	-	-	-	-	-	-	-	4.2	7.6	
			21	-	-	-	-	-	-	-	3	6.3	
			24	-	-	-	-	-	-	-	2.3	5.4	
			27	-	-	-	-	-	-	-	-	4.3	
			30	-	-	-	-	-	-	-	-	4.1	
			33	-	-	-	-	-	-	-	-	2.9	
			36	-	-	-	-	-	-	-	-	2	
			39	-	-	-	-	-	-	-	-	-	

- Hook block weight up to 20t permissible
- Erection not permissible

It may be necessary to use a greater hook block weight than is indicated here. See the load chart manual: Determination of hoist rope reeving and hook block. This heavier hook block must be carried along on the ground during erection / take-down, or the auxiliary weights must be attached after erection and removed before take down.

PROJECT:
LR11000 SL8DF2B 132+12

LOCATION: -----
BUCKNER CONTACT: Dan Ives, PE
Dani@BucknerHeavyLift.com
LIFT PLAN BY: Dan Ives, PE
Dani@BucknerHeavyLift.com

DRAWING NOTES:
Erection and Takedown –
DBR 12m

FILE: C:\Users\Dan Ives\OneDrive – Buckner HeavyLift\Cranes\Engineering\Drawings\BHL\Buckner\Build Sheets\LR 11000\LR 11000 – SL8DF2B 132m + 12m
CREATED: 04.15.2024 12:47:30 PM
EDITING TIME: 10h18m FILE SIZE: 8979.55Kb
PAPER SIZE: ANSI B (17.00 x 11.00 Inches)
SAVED: 04.15.2024 12:47:24 PM
PLOTTED: 04.15.2024 12:47:30 PM

Revisions

All Sheets Same Revision Level

Rev.	Date	Description
000	04.15.2024	Preliminary Planning & Initial Layout
001	----	----
002	----	----
003	----	----
004	----	----
005	----	----
006	----	----
007	----	----
008	----	----
009	----	----
010	----	----

SHEET: 007 OF 011



SL8DF2B – operation, turntable ballast 250t / central ballast 130t
SL8F2: F-connector head

aat_235_070_00001_00_001
Page: 3 of 6

On crawlers 9.6m x 9.2m x 2.0m
Ground slope: maximum 0.3°
Without mechanical auxiliary support

System: S 3228.40/25/20/15
D 2825.25/20
F 2318.10

Wind speeds:

maximum 9.0m/s: for all boom lengths and wind direction 360°.
maximum 12.8m/s: for boom lengths below 140m and wind direction 360°. With a total boom length above 140m (highlighted in gray in the chart), erection / take-down is only permissible with wind from the front or from the rear on the boom. The permissible inflow angle range is ±25°.

SL8DF2B DR 15m DBR 15m		Permissible weight of the hook block [t] on the F2-boom											
		For derrick ballast [t] for derrick radius (DR) 15m / derrick ballast radius (DBR) 15m											
		0	50	100	150	200	250	300	350	400	450		
Main boom length [m]	SL8-102	F2 [m]	12	-	-	8.6	16	•	•	•	•	•	•
			15	-	-	7.2	15	•	•	•	•	•	•
			18	-	-	6.5	14	•	•	•	•	•	•
			21	-	-	5.2	12	•	•	•	•	•	•
			24	-	-	4.5	11	18	•	•	•	•	•
			27	-	-	3.3	10	17	•	•	•	•	•
			30	-	-	2.9	9.8	16	•	•	•	•	•
			33	-	-	-	8.5	15	•	•	•	•	•
			36	-	-	-	7.6	14	•	•	•	•	•
			39	-	-	-	6.3	12	19	•	•	•	•
Main boom length [m]	SL8-108	F2 [m]	12	-	-	-	9.6	17	•	•	•	•	•
			15	-	-	-	8.3	15	•	•	•	•	•
			18	-	-	-	7.5	14	•	•	•	•	•
			21	-	-	-	6.2	13	•	•	•	•	•
			24	-	-	-	5.4	12	19	•	•	•	•
			27	-	-	-	4.2	11	17	•	•	•	•
			30	-	-	-	3.8	10	17	•	•	•	•
			33	-	-	-	2.7	9.1	15	•	•	•	•
			36	-	-	-	-	8.2	14	•	•	•	•
			39	-	-	-	-	7	13	19	•	•	•
Main boom length [m]	SL8-114	F2 [m]	12	-	-	-	-	9.4	16	•	•	•	•
			15	-	-	-	-	8.1	15	•	•	•	•
			18	-	-	-	-	7.3	14	•	•	•	•
			21	-	-	-	-	6.1	12	19	•	•	•
			24	-	-	-	-	5.3	11	18	•	•	•
			27	-	-	-	-	4.1	10	17	•	•	•
			30	-	-	-	-	3.7	10	16	•	•	•
			33	-	-	-	-	2.6	8.7	14	•	•	•
			36	-	-	-	-	-	7.9	13	19	•	•
			39	-	-	-	-	-	6.6	12	18	•	•

- Hook block weight up to 20t permissible
- Erection not permissible

It may be necessary to use a greater hook block weight than is indicated here. See the load chart manual: Determination of hoist rope reeving and hook block. This heavier hook block must be carried along on the ground during erection / take-down, or the auxiliary weights must be attached after erection and removed before take down.

SL8DF2B – operation, turntable ballast 250t / central ballast 130t
SL8F2: F-connector head

aat_235_070_00001_00_001
Page: 4 of 6

On crawlers 9.6m x 9.2m x 2.0m
Ground slope: maximum 0.3°
Without mechanical auxiliary support

System: S 3228.40/25/20/15
D 2825.25/20
F 2318.10

Wind speeds:

maximum 9.0m/s: for all boom lengths and wind direction 360°.
maximum 12.8m/s: for boom lengths below 140m and wind direction 360°. With a total boom length above 140m (highlighted in gray in the chart), erection / take-down is only permissible with wind from the front or from the rear on the boom. The permissible inflow angle range is ±25°.

SL8DF2B DR 15m DBR 15m		Permissible weight of the hook block [t] on the F2-boom											
		For derrick ballast [t] for derrick radius (DR) 15m / derrick ballast radius (DBR) 15m											
		0	50	100	150	200	250	300	350	400	450		
Main boom length [m]	SL8-120	F2 [m]	12	-	-	-	-	2.8	9.7	16	•	•	•
			15	-	-	-	-	-	8.4	15	•	•	•
			18	-	-	-	-	-	7.6	14	•	•	•
			21	-	-	-	-	-	6.4	12	19	•	•
			24	-	-	-	-	-	5.6	11	18	•	•
			27	-	-	-	-	-	4.4	10	16	•	•
			30	-	-	-	-	-	4	10	16	•	•
			33	-	-	-	-	-	2.8	8.8	14	19	19
			36	-	-	-	-	-	2.1	7.9	13	18	18
			39	-	-	-	-	-	-	6.7	12	17	17
Main boom length [m]	SL8-126	F2 [m]	12	-	-	-	-	-	-	8.9	15	•	•
			15	-	-	-	-	-	-	7.6	14	19	•
			18	-	-	-	-	-	-	6.8	13	18	19
			21	-	-	-	-	-	-	5.6	11	17	18
			24	-	-	-	-	-	-	4.9	10	15	17
			27	-	-	-	-	-	-	3.7	9.6	14	15
			30	-	-	-	-	-	-	3.3	9.1	14	15
			33	-	-	-	-	-	-	2.2	7.9	12	13
			36	-	-	-	-	-	-	-	7	11	12
			39	-	-	-	-	-	-	-	5.8	10	11
Main boom length [m]	SL8-132	F2 [m]	12	-	-	-	-	-	-	2.2	8.4	13	15
			15	-	-	-	-	-	-	-	7.2	12	14
			18	-	-	-	-	-	-	-	6.4	11	13
			21	-	-	-	-	-	-	-	5.2	10	11
			24	-	-	-	-	-	-	-	4.5	9.3	10
			27	-	-	-	-	-	-	-	3.3	8.2	10
			30	-	-	-	-	-	-	-	3	7.8	9.2
			33	-	-	-	-	-	-	-	-	6.5	8.1
			36	-	-	-	-	-	-	-	-	5.6	7.3
			39	-	-	-	-	-	-	-	-	4.5	6.1

- Hook block weight up to 20t permissible
- Erection not permissible

It may be necessary to use a greater hook block weight than is indicated here. See the load chart manual: Determination of hoist rope reeving and hook block. This heavier hook block must be carried along on the ground during erection / take-down, or the auxiliary weights must be attached after erection and removed before take down.

PROJECT:
LR11000 SL8DF2B 132+12

LOCATION: -----
BUCKNER CONTACT: Dan Ives, PE
Dani@BucknerHeavyLift.com
LIFT PLAN BY: Dan Ives, PE
Dani@BucknerHeavyLift.com

DRAWING NOTES:
Erection and Takedown –
DBR 15m

FILE: C:\Users\Dan Ives\OneDrive – Buckner HeavyLift
Cranes\Engineering\Drawings\BHL\Buckner\Build
Sheets\LR 11000\LR 11000 – SL8DF2B 132m + 12m
CREATED: 04.15.2024 12:47:31 PM
EDITING TIME: 10h18m FILE SIZE: 8979.55Kb
PAPER SIZE: ANSI B (17.00 x 11.00 Inches)
SAVED: 04.15.2024 12:47:24 PM
PLOTTED: 04.15.2024 12:47:31 PM

Revisions

All Sheets Same Revision Level

Rev.	Date	Description
000	04.15.2024	Preliminary Planning & Initial Layout
001	----	----
002	----	----
003	----	----
004	----	----
005	----	----
006	----	----
007	----	----
008	----	----
009	----	----
010	----	----

SHEET: 008 OF 011



SL8DF2B – operation, turntable ballast 250t / central ballast 130t
SL8F2: F-connector head

aat_235_070_00001_00_001
 Page: 5 of 6

On crawlers 9.6m x 9.2m x 2.0m
 Ground slope: maximum 0.3°
 Without mechanical auxiliary support

System: S 3228.40/25/20/15
 D 2825.25/20
 F 2318.10

Wind speeds:

maximum 9.0m/s: for all boom lengths and wind direction 360°.
maximum 12.8m/s: for boom lengths below 140m and wind direction 360°. With a total boom length above 140m (highlighted in gray in the chart), erection / take-down is only permissible with wind from the front or from the rear on the boom. The permissible inflow angle range is ±25°.

SL8DF2B DR 18m DBR 18m			Permissible weight of the hook block [t] on the F2-boom											
			For derrick ballast [t] for derrick radius (DR) 18m / derrick ballast radius (DBR) 18m											
			0	50	100	150	200	250	300	350	400	450		
Main boom length [m]	SL8-102	F2 [m]	12	-	2.7	11	•	•	•	•	•	•	•	•
			15	-	-	10	19	•	•	•	•	•	•	•
			18	-	-	9.6	18	•	•	•	•	•	•	•
			21	-	-	8.3	16	•	•	•	•	•	•	•
			24	-	-	7.4	15	•	•	•	•	•	•	•
			27	-	-	6.2	14	•	•	•	•	•	•	•
			30	-	-	5.7	13	•	•	•	•	•	•	•
			33	-	-	4.5	12	•	•	•	•	•	•	•
			36	-	-	3.7	11	18	•	•	•	•	•	•
			39	-	-	2.6	10	17	•	•	•	•	•	•
Main boom length [m]	SL8-108	F2 [m]	12	-	-	5.2	13	•	•	•	•	•	•	
			15	-	-	3.9	12	•	•	•	•	•	•	
			18	-	-	3.2	11	19	•	•	•	•	•	
			21	-	-	2.1	10	18	•	•	•	•	•	
			24	-	-	-	9.3	17	•	•	•	•	•	
			27	-	-	-	8.1	15	•	•	•	•	•	
			30	-	-	-	7.6	15	•	•	•	•	•	
			33	-	-	-	6.3	13	•	•	•	•	•	
			36	-	-	-	5.5	12	•	•	•	•	•	
			39	-	-	-	4.3	11	18	•	•	•	•	
Main boom length [m]	SL8-114	F2 [m]	12	-	-	-	6.3	14	•	•	•	•	•	
			15	-	-	-	5	13	•	•	•	•	•	
			18	-	-	-	4.3	12	•	•	•	•	•	
			21	-	-	-	3.2	10	18	•	•	•	•	
			24	-	-	-	2.5	10	17	•	•	•	•	
			27	-	-	-	-	8.8	16	•	•	•	•	
			30	-	-	-	-	8.3	15	•	•	•	•	
			33	-	-	-	-	7	14	•	•	•	•	
			36	-	-	-	-	6.2	13	•	•	•	•	
			39	-	-	-	-	5	11	18	•	•	•	

- Hook block weight up to 20t permissible
- Erection not permissible

It may be necessary to use a greater hook block weight than is indicated here. See the load chart manual: Determination of hoist rope reeving and hook block. This heavier hook block must be carried along on the ground during erection / take-down, or the auxiliary weights must be attached after erection and removed before take down.

SL8DF2B – operation, turntable ballast 250t / central ballast 130t
SL8F2: F-connector head

aat_235_070_00001_00_001
 Page: 6 of 6

On crawlers 9.6m x 9.2m x 2.0m
 Ground slope: maximum 0.3°
 Without mechanical auxiliary support

System: S 3228.40/25/20/15
 D 2825.25/20
 F 2318.10

Wind speeds:

maximum 9.0m/s: for all boom lengths and wind direction 360°.
maximum 12.8m/s: for boom lengths below 140m and wind direction 360°. With a total boom length above 140m (highlighted in gray in the chart), erection / take-down is only permissible with wind from the front or from the rear on the boom. The permissible inflow angle range is ±25°.

SL8DF2B DR 18m DBR 18m			Permissible weight of the hook block [t] on the F2-boom										
			For derrick ballast [t] for derrick radius (DR) 18m / derrick ballast radius (DBR) 18m										
			0	50	100	150	200	250	300	350	400	450	
Main boom length [m]	SL8-120	F2 [m]	12	-	-	-	-	7.8	15	•	•	•	•
			15	-	-	-	-	6.5	14	•	•	•	•
			18	-	-	-	-	5.7	13	•	•	•	•
			21	-	-	-	-	4.6	12	19	•	•	•
			24	-	-	-	-	3.8	11	18	•	•	•
			27	-	-	-	-	2.7	9.8	16	•	•	•
			30	-	-	-	-	2.3	9.3	16	•	•	•
			33	-	-	-	-	-	8	14	•	•	•
			36	-	-	-	-	-	7.2	13	•	•	•
			39	-	-	-	-	-	5.9	12	18	•	•
Main boom length [m]	SL8-126	F2 [m]	12	-	-	-	-	-	8	15	•	•	•
			15	-	-	-	-	-	6.8	14	•	•	•
			18	-	-	-	-	-	6	13	•	•	•
			21	-	-	-	-	-	4.9	12	19	•	•
			24	-	-	-	-	-	4.1	11	17	19	•
			27	-	-	-	-	-	2.9	9.8	16	18	19
			30	-	-	-	-	-	2.6	9.3	15	17	18
			33	-	-	-	-	-	-	8	14	16	17
			36	-	-	-	-	-	-	7.2	13	15	16
			39	-	-	-	-	-	-	6	12	14	14
Main boom length [m]	SL8-132	F2 [m]	12	-	-	-	-	-	-	8.6	12	12	12
			15	-	-	-	-	-	-	7.3	11	11	11
			18	-	-	-	-	-	-	6.6	12	12	12
			21	-	-	-	-	-	-	5.4	12	12	12
			24	-	-	-	-	-	-	4.6	11	12	12
			27	-	-	-	-	-	-	3.5	9.7	12	12
			30	-	-	-	-	-	-	3.1	9.3	11	12
			33	-	-	-	-	-	-	2	8	10	11
			36	-	-	-	-	-	-	-	7.3	9.5	10
			39	-	-	-	-	-	-	-	6	8.4	9.2

- Hook block weight up to 20t permissible
- Erection not permissible

It may be necessary to use a greater hook block weight than is indicated here. See the load chart manual: Determination of hoist rope reeving and hook block. This heavier hook block must be carried along on the ground during erection / take-down, or the auxiliary weights must be attached after erection and removed before take down.

PROJECT:
 LR11000 SL8DF2B 132+12

LOCATION: -----
 BUCKNER CONTACT: Dan Ives, PE
 Dani@BucknerHeavyLift.com
 LIFT PLAN BY: Dan Ives, PE
 Dani@BucknerHeavyLift.com

DRAWING NOTES:
 Erection and Takedown –
 DBR 18m

FILE: C:\Users\Dan Ives\OneDrive – Buckner HeavyLift
 Cranes\Engineering\Drawings\BHL\Buckner\Build
 Sheets\LR 11000\LR 11000 – SL8DF2B 132m + 12m
 CREATED: 04.15.2024 12:47:24 PM
 EDITING TIME: 10h19m FILE SIZE: 8979.55Kb
 PAPER SIZE: ANSI B (17.00 x 11.00 Inches)
 SAVED: 04.15.2024 12:47:24 PM
 PLOTTED: 04.15.2024 12:47:32 PM

Revisions

All Sheets Same Revision Level

Rev.	Date	Description
000	04.15.2024	Preliminary Planning & Initial Layout
001	----	----
002	----	----
003	----	----
004	----	----
005	----	----
006	----	----
007	----	----
008	----	----
009	----	----
010	----	----

SHEET: 009 OF 011

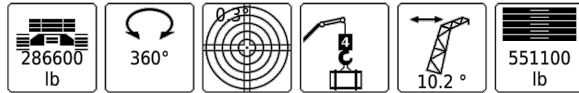


LR 11000 -- 098279

T235.070.00306

EN 13000

SL8DF2B: SL8-433ft D-118ft F2-39ft10° B

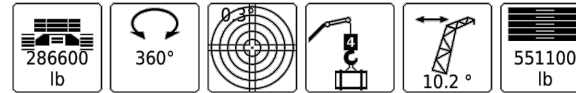


LR 11000 -- 098279

T235.070.00306

EN 13000

SL8DF2B: SL8-433ft D-118ft F2-39ft10° B



PROJECT: LR11000 SL8DF2B 132+12

LOCATION: BUCKNER CONTACT: Dan Ives, PE Dani@BucknerHeavyLift.com LIFT PLAN BY: Dan Ives, PE Dani@BucknerHeavyLift.com

DRAWING NOTES: Load Chart 1

Table with columns for height (ft) and load capacity (x1000lb) for various crane configurations. Includes a summary row at the bottom with values like 440.9, 551.1, 661.4, etc.

Table with columns for height (ft) and load capacity (x1000lb) for various crane configurations. Includes a summary row at the bottom with values like 661.4, 771.6, 881.8, etc.

FILE: C:\Users\Dan Ives\OneDrive - Buckner HeavyLift\Cranes\Engineering\Drawings\BHL\Buckner\Build Sheets\LR 11000\LR 11000 - SL8DF2B 132m + 12m CREATED: 04.15.2024 12:10:40 PM EDITING TIME: 10h19m FILE SIZE: 8979.55Kb PAPER SIZE: ANSI B (17.00 x 11.00 Inches) SAVED: 04.15.2024 @ 12:47:24 PM PLOTTED: 04.15.2024 @ 12:47:33 PM

Revisions

All Sheets Same Revision Level

Table with columns: Rev., Date, Description. Row 000: 04.15.2024 Preliminary Planning & Initial Layout. Rows 001-010 are blank.

SHEET: 010 OF 011



