

BUCKNER

HEAVYLIFT CRANES

Contents	
Sheet	Description
001	Title Page
002	Boom Configuration
003	Build Sheet
004	Pendant Straps
005	Reeving 1
006	Reeving 2
007	Erection and Takedown
008	Load Chart

PROJECT:
LR 1300SX 125' 2821 ST

LOCATION: -----
BUCKNER CONTACT: Dan Ives, PE
Dani@BucknerCompanies.com
LIFT PLAN BY: Dan Ives, PE
Dani@BucknerCompanies.com

DRAWING NOTES:
Title Page

FILE: C:\Users\Dan Ives\OneDrive - Buckner Heavylift
Cranes\Engineering\Drawings\BHL\Buckner\Build
Sheets\LR 1300SX\LR 1300SX - 2821 Main Boom 125'
CREATED: 10.09.2024 @ 11:57:51 AM
EDITING TIME: 1h44m FILE SIZE: 2805.19Kb
PAPER SIZE: ANSI B (17.00 x 11.00 Inches)
SAVED: 10.09.2024 @ 11:57:51 AM
PLOTTED: 10.09.2024 @ 11:57:53 AM

Revisions

All Sheets Same Revision Level

Rev.	Date	Description
000	10.09.2024	Preliminary Planning & Initial Layout
001	----	----
002	----	----
003	----	----
004	----	----
005	----	----
006	----	----
007	----	----
008	----	----
009	----	----
010	----	----

SHEET: 001 OF 008



7.5 Main boom 2821

System-relevant information for main boom 2821:

- Configuration of main boom
 - Installation position of rope guide (type A)
 - Mid-point suspensions installation positions
- Lengths of mid-point suspensions
- Overview of main boom 2821 steel pendant straps
- Overview of main boom 2821 CF pendant straps
- Reeving diagrams for one rope across main boom head 2821 (load position1)
- Reeving diagrams for two ropes across main boom head 2821 (load position1)
- Reeving diagrams for one rope across auxiliary jib (36 t (79300 lb)) on main boom head 2821 (load position1)
- Reeving diagrams for two ropes across auxiliary jib (36 t (79300 lb)) and main boom head 2821 (load position 1)
- Reeving diagrams jib luffing winch as auxiliary winch

7.5.1 Configuration of main boom



DANGER

Assembly with excessive main boom length!
Structural failure.

► Check main boom length in load chart for validity.

Main boom length	Configuration of main boom (symbolic)
20 m 66 ft A)	
23 m 75 ft A)	
26 m 85 ft A)	
29 m 95 ft A)	
32 m 105 ft A)	
35 m 115 ft A)	
38 m 125 ft A)	
41 m 135 ft A)	
44 m 144 ft A)	
47 m 154 ft A)	

Main boom length	Configuration of main boom (symbolic)
50 m 164 ft	
53 m 174 ft	
56 m 184 ft	
59 m 195 ft	
62 m 203 ft	
65 m 213 ft	
68 m 223 ft	
71 m 233 ft	
74 m 243 ft	
77 m 253 ft	
80 m 262 ft	
83 m 272 ft	
86 m 282 ft	
89 m 292 ft	
92 m 302 ft	
95 m 312 ft	
98 m 322 ft	
101 m 332 ft	
104 m 342 ft	

Tab. 515: Configuration of main boom 2821

A) Install rope guide exclusively with boom configuration 4, when reeving load position1 and load position 2.

S - Installation position rope guide (type A)

S* - Installation position rope guide (type A)

PROJECT:

LR 1300SX 125' 2821 ST

LOCATION: -----

BUCKNER CONTACT: Dan Ives, PE

Dani@BucknerCompanies.com

LIFT PLAN BY: Dan Ives, PE

Dani@BucknerCompanies.com

DRAWING NOTES:

Boom Configuration

FILE: C:\Users\Dan Ives\OneDrive - Buckner Heavylift

Cranes\Engineering\Drawings\BHL\Buckner\Build Sheets\LR 1300SX\LR 1300SX - 2821 Main Boom 125'

CREATED: 10.09.2024 @ 11:57:51 AM

EDITING TIME: 1h44m FILE SIZE: 2805.19Kb

PAPER SIZE: ANSI B (17.00 x 11.00 Inches)

SAVED: 10.09.2024 @ 11:57:51 AM

PLOTTED: 10.09.2024 @ 11:57:54 AM

Revisions

All Sheets Same Revision Level

Rev.	Date	Description
000	10.09.2024	Preliminary Planning & Initial Layout
001	----	----
002	----	----
003	----	----
004	----	----
005	----	----
006	----	----
007	----	----
008	----	----
009	----	----
010	----	----

SHEET: 002 OF 008



Assembly and dismantling

Main boom 2821

A) Machine with CF pendant straps with boom configuration main boom 2821 + luffing jib 1916: Do not install any mid-point suspensions with main boom lengths 77 m (253 ft) and 80 m (262 ft).

7.5.3 Overview of main boom 2821 steel pendant straps

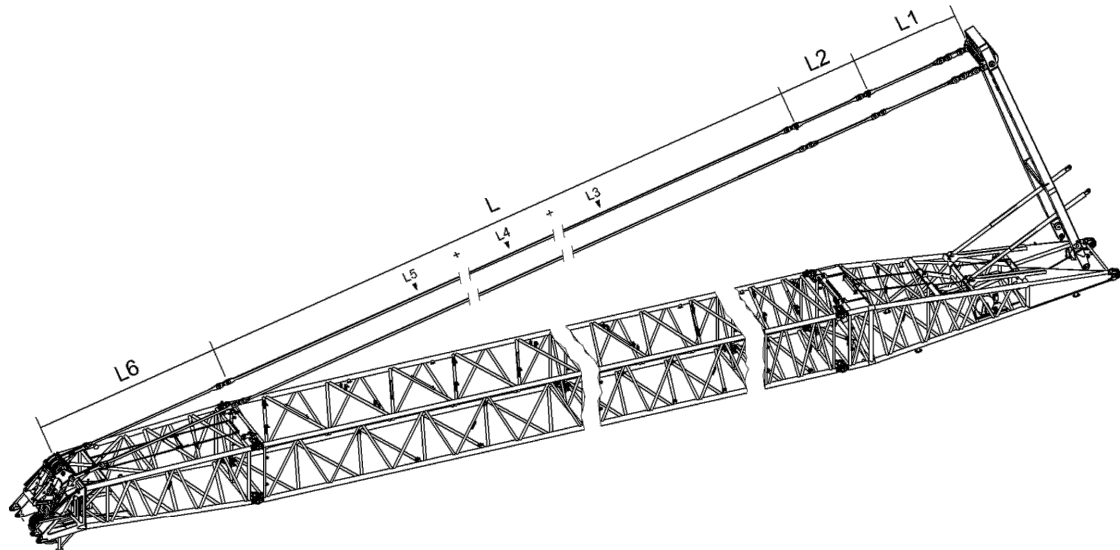


Fig. 2636: Overview of main boom 2821 steel pendant straps

Pendant straps A-frame1 to main boom head 2821

Name	Value
L1 A-frame1 equalizer (For more information see: A-frame1 equalizer, page 65)	3730 mm 12' 3" ft-in
L2 Main boom base section equalizer (For more information see: Equalizer of main boom base section 2821.30, page 165)	2670 mm 8' 9" ft-in
Main boom pendant straps consisting of:	
L3 Main boom pendant strap 3 m (10 ft) (For more information see: Main boom pendant strap 3 m (10 ft), page 166)	Total L3 +
L4 Main boom pendant strap 6 m (20 ft) (For more information see: Main boom pendant strap 6 m (20 ft), page 168)	Total L4 +
L5 Main boom pendant strap 12 m (40 ft) (For more information see: Main boom pendant strap 12 m (40 ft), page 170)	Total L5

LWNLR.x/LR 1300 SX V02.01/Auslieferung/2014-07-22/en

Assembly and dismantling

Main boom 2821

Name	Value
L6 Main boom pendant strap on main boom head 2821 (For more information see: Main boom pendant strap on main boom head 2821.24, page 171)	6300 mm 20' 8" ft-in

Tab. 390: Pendant straps A-frame1 to main boom head 2821

Configuration of main boom pendant straps (L):

Required number of main boom pendant straps 3 m (10 ft) (L3) corresponds to number of main boom sections 3 m (10 ft).

Required number of main boom pendant straps 6 m (20 ft) (L4) corresponds to number of main boom sections 6 m (20 ft).

Required number of main boom pendant straps 12 m (40 ft) (L5) corresponds to number of main boom sections 12 m (40 ft).



Note

► For the admissible number of main boom sections 3 m (10 ft), 6 m (20 ft), 12 m (40 ft), refer to the following table: (For more information see: 7.5.1 Configuration of main boom, page 1056)

7.5.4 Overview of main boom 2821 CF pendant straps

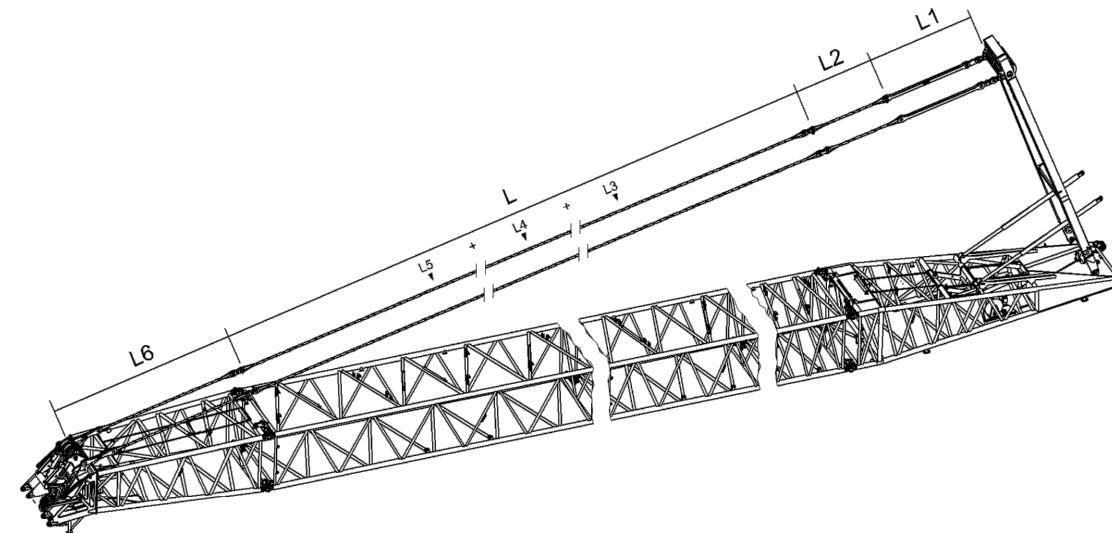


Fig. 2637: Overview of main boom 2821 CF pendant straps

Pendant straps A-frame1 to main boom head 2821

Name	Value
L1 A-frame1 equalizer (For more information see: A-frame1 equalizer, page 66)	3700 mm 12' 2" ft-in

PROJECT:

LR 1300SX 125' 2821 ST

LOCATION: -----
BUCKNER CONTACT: Dan Ives, PE
Dani@BucknerCompanies.com
LIFT PLAN BY: Dan Ives, PE
Dani@BucknerCompanies.com

DRAWING NOTES:
Pendant Straps

FILE: C:\Users\Dan Ives\OneDrive - Buckner Heavylift
Cranes\Engineering\Drawings\BHL\Buckner\Build
Sheets\LR 1300SX\LR 1300SX - 2821 Main Boom 125'
CREATED: 10.09.2024 @ 11:57:51 AM
EDITING TIME: 1h44m FILE SIZE: 2805.19Kb
PAPER SIZE: ANSI B (17.00 x 11.00 Inches)
SAVED: 10.09.2024 @ 11:57:51 AM
PLOTTED: 10.09.2024 @ 11:57:55 AM

Revisions

All Sheets Same Revision Level

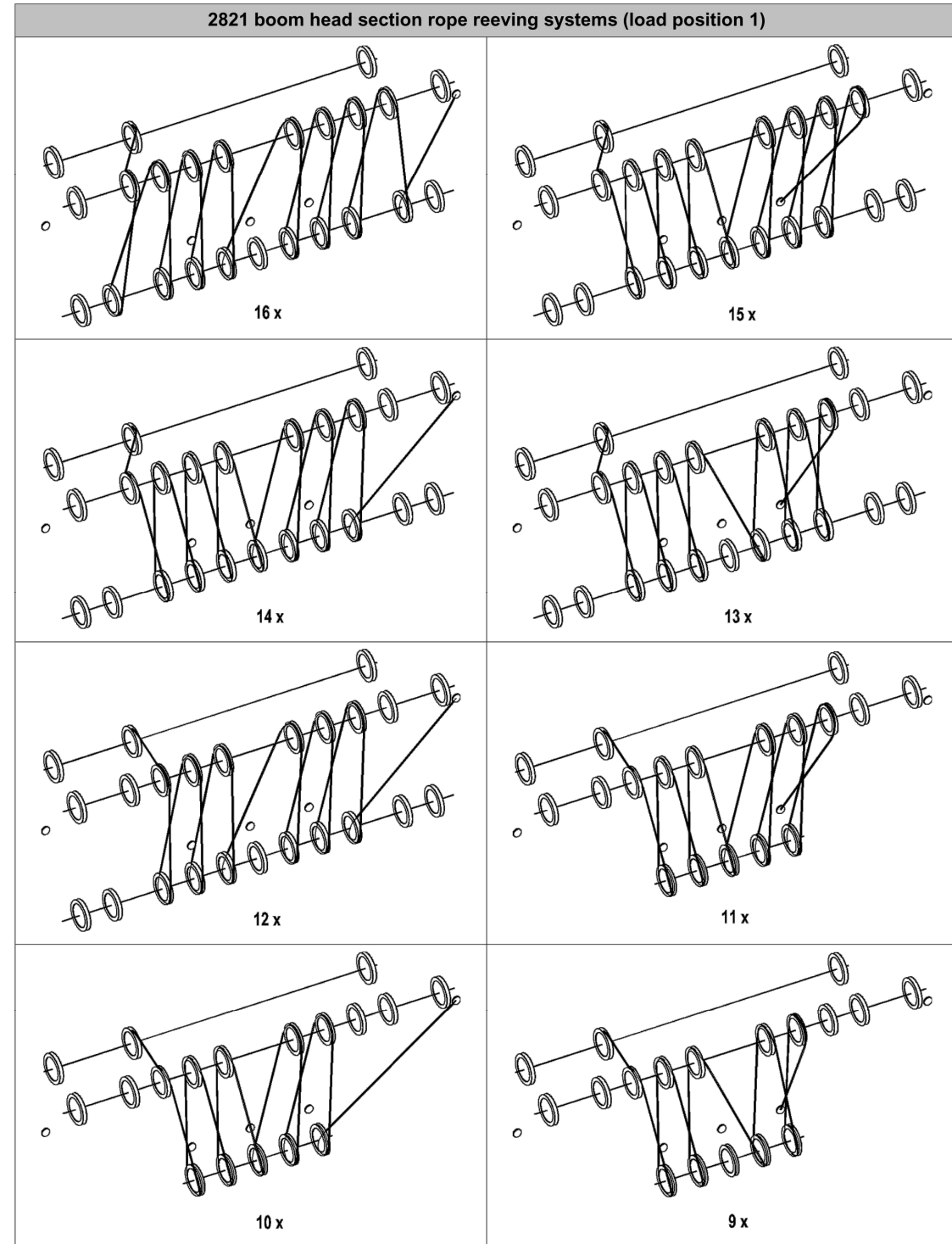
Rev.	Date	Description
000	10.09.2024	Preliminary Planning & Initial Layout
001	----	----
002	----	----
003	----	----
004	----	----
005	----	----
006	----	----
007	----	----
008	----	----
009	----	----
010	----	----

SHEET: 004 OF 008



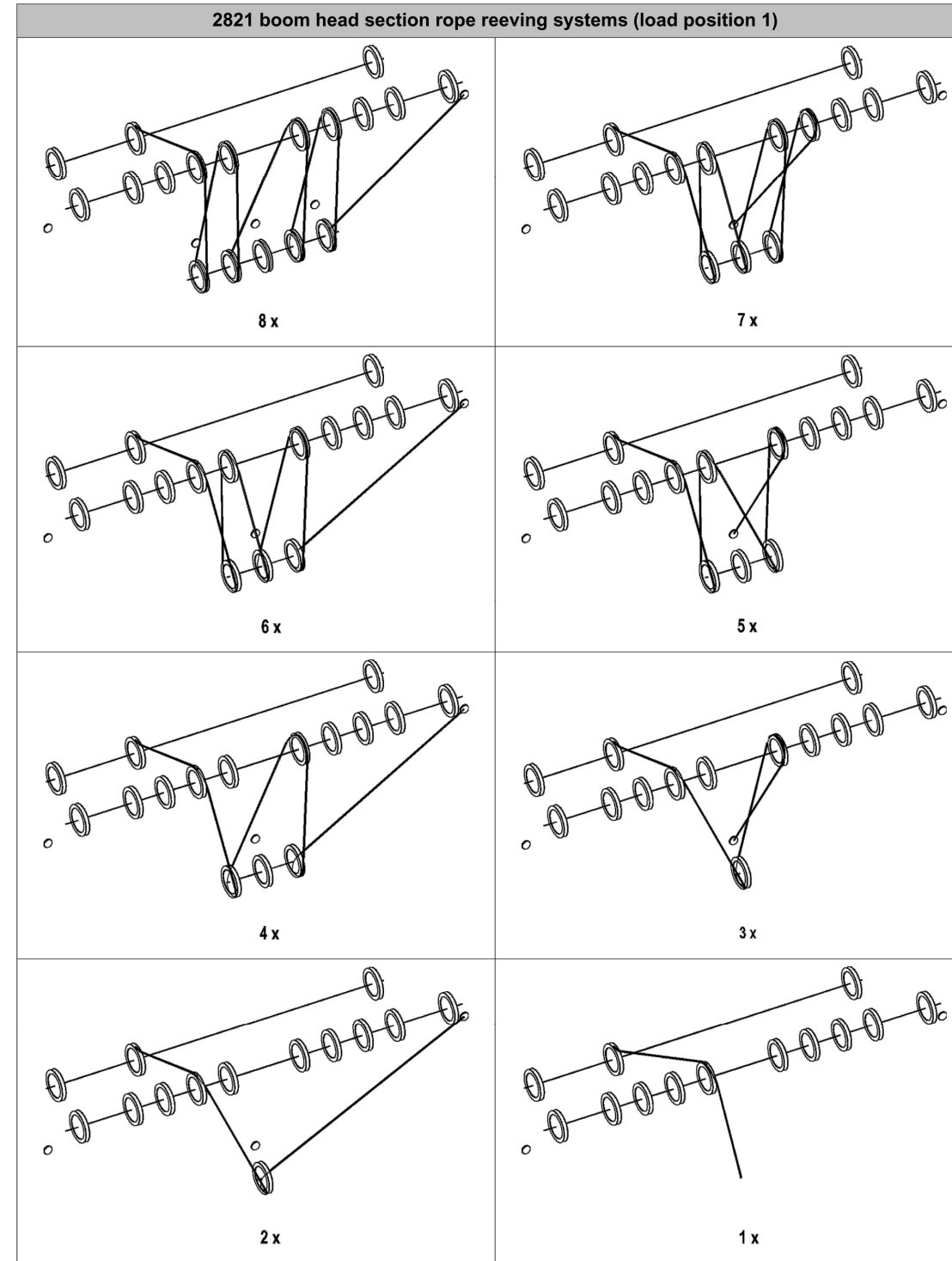
Assembly and dismantling

Main boom 2821



Assembly and dismantling

Main boom 2821



Tab. 392: 2821 boom head section rope reeving systems (load position 1)

PROJECT:
LR 1300SX 125' 2821 ST

LOCATION: -----
BUCKNER CONTACT: Dan Ives, PE
DanI@BucknerCompanies.com
LIFT PLAN BY: Dan Ives, PE
DanI@BucknerCompanies.com

DRAWING NOTES:
Reeving 2

FILE: C:\Users\Dan Ives\OneDrive - Buckner Heavylift
Cranes\Engineering\Drawings\BHL\Buckner\Build
Sheets\LR 1300SX\LR 1300SX - 2821 Main Boom 125'
CREATED: 10.09.2024 @ 11:57:51 AM
EDITING TIME: 1h44m FILE SIZE: 2805.19Kb
PAPER SIZE: ANSI B (17.00 x 11.00 Inches)
SAVED: 10.09.2024 @ 11:57:51 AM
PLOTTED: 10.09.2024 @ 11:57:57 AM

Revisions

All Sheets Same Revision Level

Rev.	Date	Description
000	10.09.2024	Preliminary Planning & Initial Layout
001	----	----
002	----	----
003	----	----
004	----	----
005	----	----
006	----	----
007	----	----
008	----	----
009	----	----
010	----	----

SHEET: 006 OF 008



