

BUCKNER

HEAVYLIFT CRANES

Build Package – Liebherr LR 1400/2– CR4416

Contents	
Sheet	Description
001	Title Page
002	Build Sheet
003	Rod Plan
004	CWT Arrangement
005	Hookblock
006	Main Reeving
007	Aux Reeving
008	Derrick Reeving
009	Erection & Take Down
010	Load Charts

Note: Crane technician MUST verify all information contained in this document matches what is provided by the manufacturer for the specific crane being used. Contact Andy Moore with questions: andym@bucknerheavylift.com Cell: 713 705 5726

PROJECT: LR1400/2 SLDB 77m (253')
 LOCATION: -----
 BUCKNER CONTACT: Andy Moore, P.E.
 AndyM@BucknerHeavylift.com
 LIFT PLAN BY: Andy Moore, P.E.
 AndyM@BucknerHeavylift.com

DRAWING NOTES:
 Title Page

LR1400/2	
Operating Mode	SLDB
Main Boom Length	77m (253')
Luffing Jib Length	N/A
Derrick Length	28m (92')
Superstructure CWT	135t (298k)
Carbody CWT	43t (95k)
Ballast Tray CWT	191t (422k)

PRELIMINARY

FILE: D:\Andy Moore\OneDrive – Buckner Heavylift Cranes\Documents – Engineering\Drawings\BHL\Buckner\Build Sheets\LR 1400\LR 1400 – SLDB 77m (253') – CR4416.dwg

CREATED: 07.19.2024 @ 9:20:08 AM
 EDITING TIME: 42h42m FILE SIZE: 4372.11Kb
 PAPER SIZE: ANSI full bleed B (11.00 x 17.00)
 SAVED: 07.19.2024 @ 9:00:15 AM
 PLOTTED: 07.19.2024 @ 10:07:49 AM

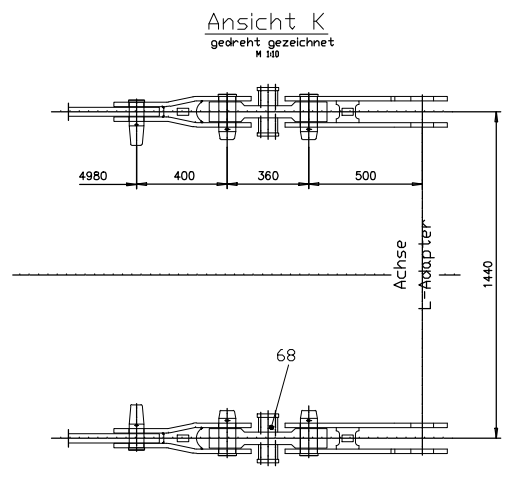
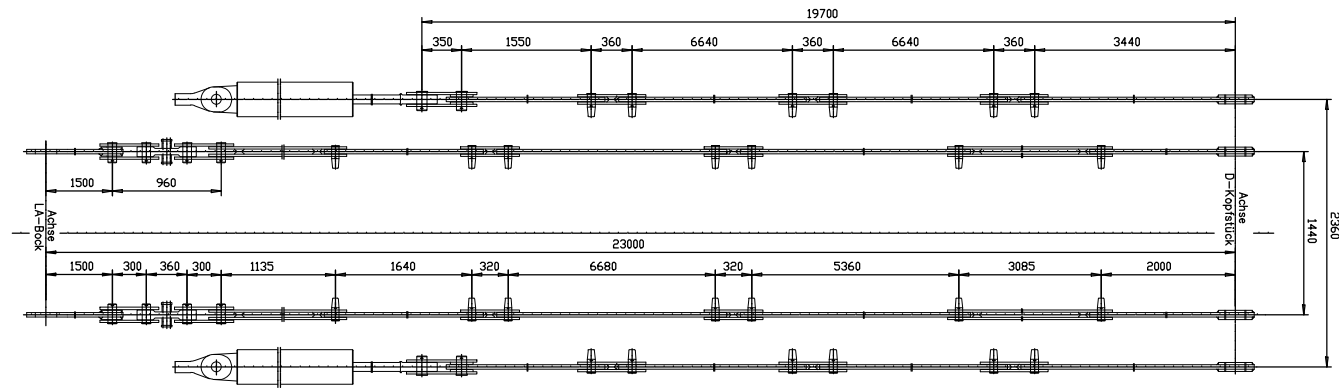
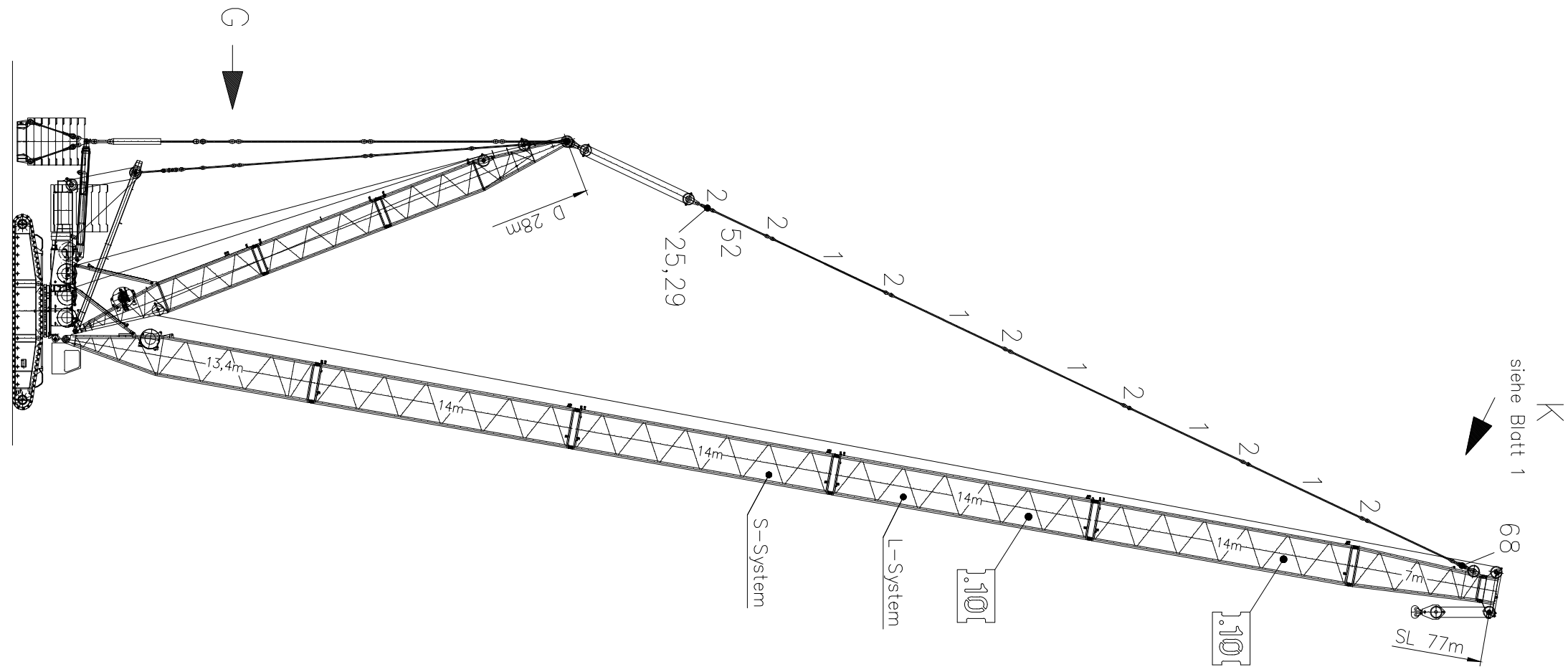
Revisions

All Sheets Same Revision Level

Rev.	Date	Description
000	07.03.2024	Preliminary Planning & Initial Layout
001	07.18.2024	Added Runner/Pill/SL CWT
002	----	----
003	----	----
004	----	----
005	----	----
006	----	----
007	----	----
008	----	----
009	----	----
010	----	----

SHEET: 001 OF 010





PROJECT: LR1400/2 SLDB 77m (253')

LOCATION: -----

BUCKNER CONTACT: Andy Moore, P.E.
AndyM@BucknerHeavyLift.com

LIFT PLAN BY: Andy Moore, P.E.
AndyM@BucknerHeavyLift.com

DRAWING NOTES:
Build Sheet

LR1400/2	
Operating Mode	SLDB
Main Boom Length	77m (253')
Luffing Jib Length	N/A
Derrick Length	28m (92')
Superstructure CWT	135t (298k)
Carbody CWT	43t (95k)
Ballast Tray CWT	191t (422k)

PRELIMINARY

FILE: D:\Andy Moore\OneDrive - Buckner HeavyLift Cranes\Documents - Engineering\Drawings\BHL\Buckner\Build Sheets\LR 1400\LR 1400 - SLDB 77m (253') - CR4416.dwg

CREATED: 07.19.2024 @ 9:20:08 AM
 EDITING TIME: 42h42m FILE SIZE: 4372.11Kb
 PAPER SIZE: ANSI full bleed B (11.00 x 17.00)
 SAVED: 07.19.2024 @ 09:01:54 AM
 PLOTTED: 07.19.2024 @ 10:07:49 AM

Revisions

All Sheets Same Revision Level

Rev.	Date	Description
000	07.03.2024	Preliminary Planning & Initial Layout
001	07.18.2024	Added Runner/Pill/SL CWT
002	----	----
003	----	----
004	----	----
005	----	----
006	----	----
007	----	----
008	----	----
009	----	----
010	----	----

SHEET: 002 OF 010



Pos. Artikel	Bezeichnung	Description
1 963497808	STANGE MIT SCHILD	ROD WITH BOARD
2 925173308	LASCHE KPL.	BRACKET COMPL.
3 963493508	STANGE	ROD
4 925173008	LASCHE KPL.	BRACKET COMPL.
9 925184408	SCHWINGE SCHWK.	ROCKER WELDED
16 921344408	STANGE KPL.	ROD CPL.
23 773424508	SEIL	ROPE
25 954383508	BOLZEN	PIN
27 921137508	STANGE KPL.	ROD CPL.
28 954385708	BOLZEN	PIN
29 433105008	SICHERUNGSFEDER	RETAINING SPRING
32 921129608	STANGE KPL.	ROD CPL.
35 948638308	BOLZEN	PIN
36 773386108	SEIL	ROPE
44 948359608	BOLZEN	PIN
51 529001508	AUFSTELLWAGEN	SET-UP CARRIAGE
52 963490108	STANGE MIT SCHILD	ROD WITH BOARD
68 692307908	ZUGMESSLASCHE	TENSION DYNAMOMETER
76 921406808	STANGE KPL.	ROD CPL.
77 921406908	LASCHE KPL.	BRACKET COMPL.
78 921407008	STANGE KPL.	ROD CPL.
79 921407208	STANGE KPL.	ROD CPL.
80 921407308	SCHWINGE SCHWK.	ROCKER WELDED
82 921425408	STANGE MIT SCHILD	ROD WITH BOARD
83 921425508	STANGE KPL.	ROD CPL.
86 923626908	LASCHE SCHWK.	CONNECTING LINK WELDED
87 923627008	LASCHE SCHWK.	CONNECTING LINK WELDED
88 923627108	LASCHE SCHWK.	CONNECTING LINK WELDED
89 773433908	SEIL	ROPE
90 773434008	SEIL	ROPE
91 956097408	BOLZEN	PIN
92 421202408	SCHEIBE	WASHER
93 955998208	BOLZEN	PIN
94 421102808	SCHEIBE	WASHER
95 433102508	SICHERUNGSFEDER	RETAINING SPRING
96 740023808	KETTE	CHAIN
98 921125208	TRAVERSE SCHWK.	CROSS-MEMBER
99 921129208	STANGE KPL.	ROD CPL.
103 970079008	BOLZEN	PIN
104 921137308	STANGE KPL.	ROD CPL.

27.4.2009	LR 1400/2 (074257) STANGEN RODS / PULL RODS	910536008 _ 002 Seite: 12
-----------	---	------------------------------

Pos. Artikel	Bezeichnung	Description
106 433010308	SPLINT	SPLIT PIN
1000 983017408	STANGEN	RODS / PULL RODS

27.4.2009	LR 1400/2 (074257) STANGEN RODS / PULL RODS	910536008 _ 002 Seite: 13
-----------	---	------------------------------

PROJECT: LR1400/2 SLDB 77m (253')

LOCATION: -----

BUCKNER CONTACT: Andy Moore, P.E.
AndyM@BucknerHeavyLift.com

LIFT PLAN BY: Andy Moore, P.E.
AndyM@BucknerHeavyLift.com

DRAWING NOTES:
Rod Plan

LR1400/2	
Operating Mode	SLDB
Main Boom Length	77m (253')
Luffing Jib Length	N/A
Derrick Length	28m (92')
Superstructure CWT	135t (298k)
Carbody CWT	43t (95k)
Ballast Tray CWT	191t (422k)



FILE: D:\Andy Moore\OneDrive - Buckner HeavyLift Cranes\Documents - Engineering\Drawings\BHL\Buckner\Build Sheets\LR 1400\LR 1400 - SLDB 77m (253') - CR4416.dwg

CREATED: 07.19.2024 @ 9:20:08 AM
 EDITING TIME: 42h42m FILE SIZE: 4372.11Kb
 PAPER SIZE: ANSI full bleed B (11.00 x
 SAVED: 07.19.2024 @ 9:00:15 AM
 PLOTTED: 07.19.2024 @ 10:07:49 AM

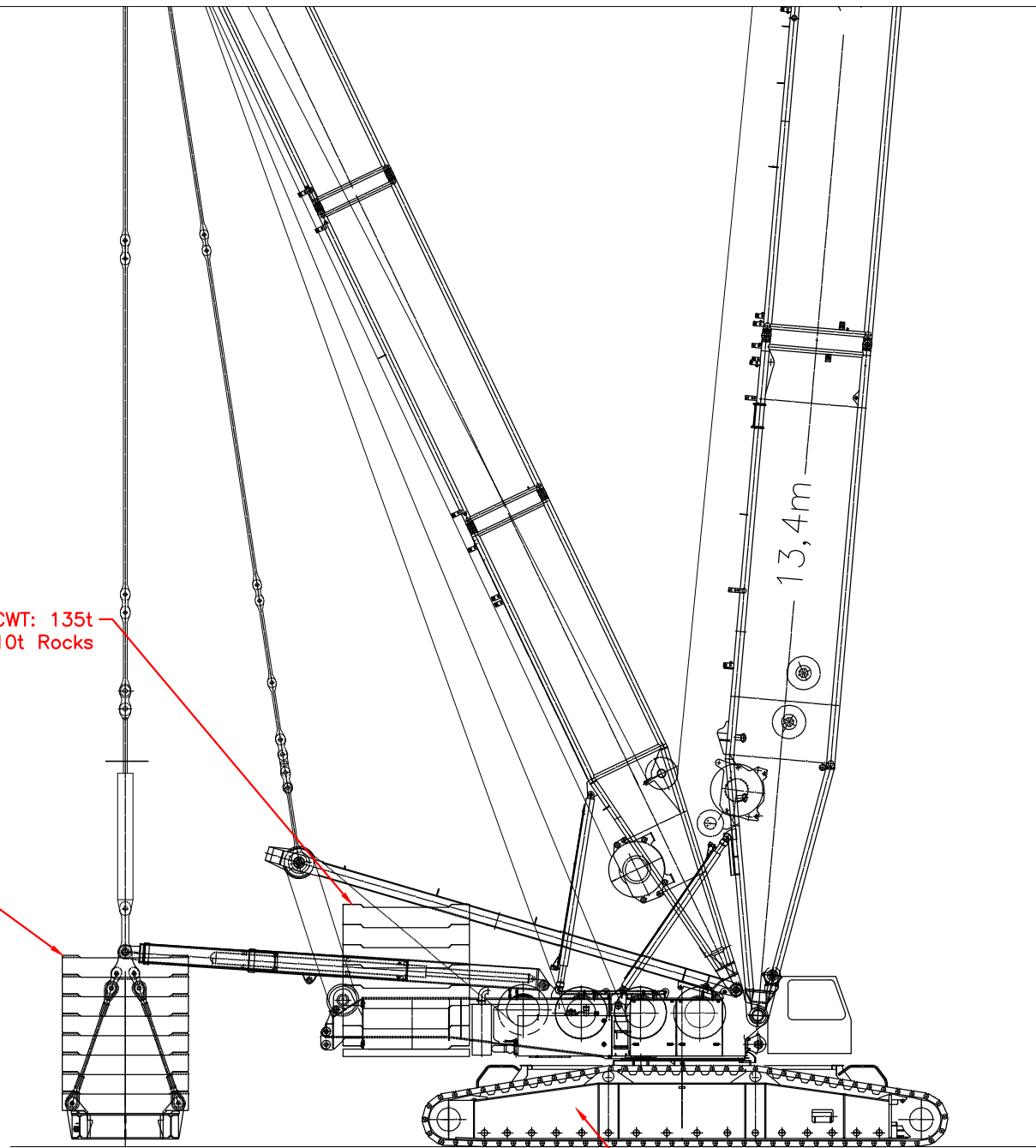
Revisions

All Sheets Same Revision Level

Rev.	Date	Description
000	07.03.2024	Preliminary Planning & Initial Layout
001	07.18.2024	Added Runner/Pill/SL CWT
002	----	----
003	----	----
004	----	----
005	----	----
006	----	----
007	----	----
008	----	----
009	----	----
010	----	----

SHEET: 003 OF 010





UPPER CWT: 135t
15t Base Slab + (x12) 10t Rocks

SL CWT: 191.3t
11.3t Tray + (x18) 10t Rocks

CARBODY CWT: 43t
(x4) 8t Ballast Plates + (x2) 5.5t Rocks

PROJECT:

LR1400/2 SLDB 77m (253')

LOCATION: -----

BUCKNER CONTACT:

Andy Moore, P.E.

AndyM@BucknerHeavylift.com

LIFT PLAN BY:

Andy Moore, P.E.

AndyM@BucknerHeavylift.com

DRAWING NOTES:

CWT Arrangement

LR1400/2	
Operating Mode	SLDB
Main Boom Length	77m (253')
Luffing Jib Length	N/A
Derrick Length	28m (92')
Superstructure CWT	135t (298k)
Carbody CWT	43t (95k)
Ballast Tray CWT	191t (422k)



FILE: D:\Andy Moore\OneDrive - Buckner Heavylift Cranes\Documents - Engineering\Drawings\BHL\Buckner\Build Sheets\LR 1400\LR 1400 - SLBD 77m (253') - CR4416.dwg

CREATED: 07.19.2024 @ 9:20:08 AM

EDITING TIME: 42h42m FILE SIZE: 4372.11Kb

PAPER SIZE: ANSI full bleed B (11.00 x

SAVED: 07.19.2024 @ 10:15:45 AM

PLOTTED: 07.19.2024 @ 10:07:51 AM

Revisions

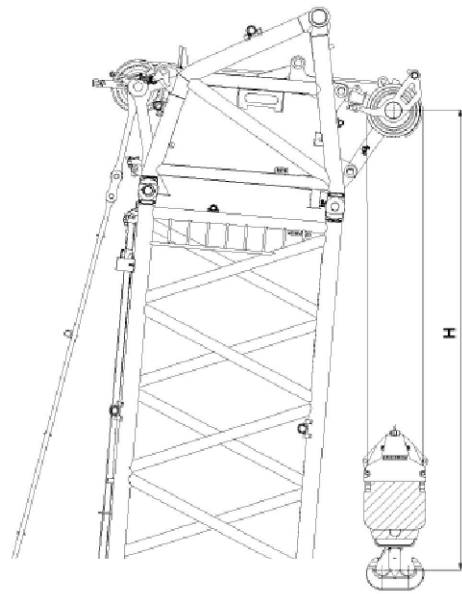
All Sheets Same Revision Level

Rev.	Date	Description
000	07.03.2024	Preliminary Planning & Initial Layout
001	07.18.2024	Added Runner/Pill/SL CWT
002	----	----
003	----	----
004	----	----
005	----	----
006	----	----
007	----	----
008	----	----
009	----	----
010	----	----

SHEET: 004 OF 010



40.35.40 Distance between hook and roller set in the boom head



1 Distance between the hook and roller set in the boom head

To determine the hook height, the lifting height must be reduced by the distance between the hook and the center of the roller set in the boom head.

The distances for the hook block used can be taken from the following charts.

Hook block	Distance H Valid for the end section
Load hook 12 E	10.5 ft
Hook block 36 EM	13.1 ft
Hook block 80 DM	13.8 ft
Hook block 160 DM	14.8 ft
Double hook block 250 / 125 DM	15.1 ft
Double hook block 400 / 200 DMZ	17.4 ft

Diagram	Weight (x 1000 lb)
1x	27.8
2x	54.9
3x	81.8
4x	108.3
5x	134.3
6x	159.8
7x	185.2
8x	210.1
9x	234.6

Main Hook Block (Winch 1)	
Hook Block 8DM (3 Sheave) 25mmØ	
Parts of Line	6
Reeving Cap. (EN 13000)	159 800 lb
Block Wt.	5 700 lb

7.3.3 Hook block 80 DM (3 rope pulleys / 176.4 kips (80 t) load)

Number of rope runs	Maximum possible overall jib length [ft] with hook block weight [lbs]		
	5.7 kips		
7	253		
6	299		
5	390		
4	482		
3	551		
2	551		
1	551		

Aux. Hook Block (Winch 2)	
Hook Block 12E (0 Sheave) 25mmØ	
Parts of Line	1
Reeving Cap. (EN 13000)	27 800 lb
Block Wt.	1 300 lb

7.3.1 Load hook 12 E (0 rope pulleys / 26.5 kips (12 t) load)

Number of rope runs	Maximum possible overall jib length [ft] with hook block weight [lbs]		
	1.3 kips		
1	482		

MAIN HOOK BLOCK WEIGHT CALC:

$G=L \times M \times N \times F$
 $L=253 \text{ ft}$
 $M=2.08 \text{ lb/ft}$
 $N=6$
 $F=1.44$

$G=253 \text{ ft} \times 2.08 \text{ lb/ft} \times 6 \times 1.44 = 4 4547 \text{ lb min. block weight} < 5 700 \text{ lb so O.K.}$

ROPE LENGTH CHECK:

$L = 3 280 \text{ ft}$
 $2790/(253*7) = 1.57 > 1 \text{ so O.K. for single line operation.}$

PROJECT:

LR1400/2 SLDB 77m (253')

LOCATION: -----
 BUCKNER CONTACT: Andy Moore, P.E.
 AndyM@BucknerHeavyLift.com
 LIFT PLAN BY: Andy Moore, P.E.
 AndyM@BucknerHeavyLift.com

DRAWING NOTES:
 Hookblock

LR1400/2	
Operating Mode	SLDB
Main Boom Length	77m (253')
Luffing Jib Length	N/A
Derrick Length	28m (92')
Superstructure CWT	135t (298k)
Carbody CWT	43t (95k)
Ballast Tray CWT	191t (422k)



FILE: D:\Andy Moore\OneDrive - Buckner HeavyLift Cranes\Documents - Engineering\Drawings\BHL\Buckner\Build Sheets\LR 1400\LR 1400 - SLBD 77m (253') - CR4416.dwg

CREATED: 07.19.2024 @ 9:20:08 AM
 EDITING TIME: 42h42m FILE SIZE: 4372.11Kb
 PAPER SIZE: ANSI full bleed B (11.00 x 17.00)
 SAVED: 07.19.2024 @ 9:00:15 AM
 PLOTTED: 07.19.2024 @ 10:07:52 AM

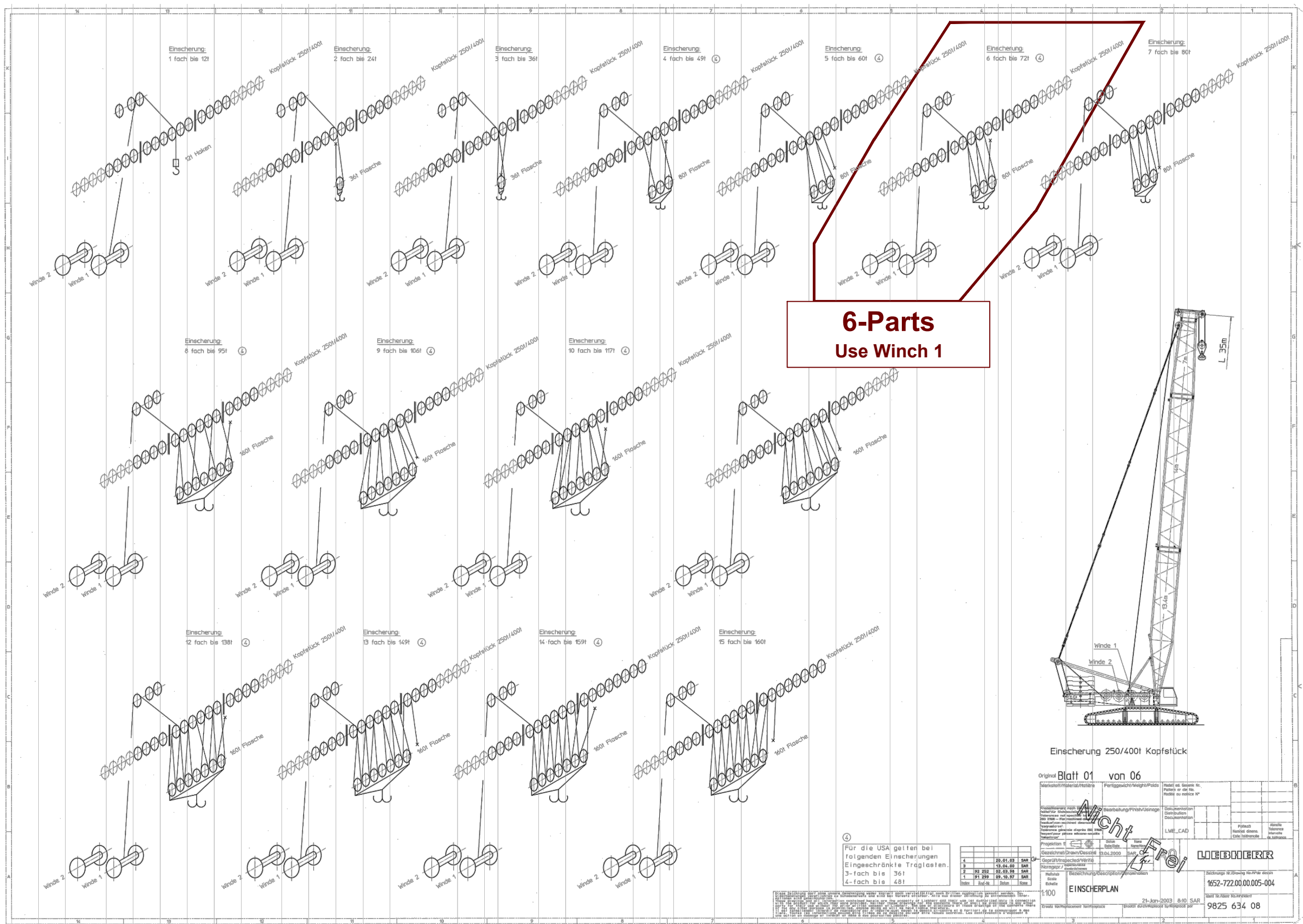
Revisions

All Sheets Same Revision Level

Rev.	Date	Description
000	07.03.2024	Preliminary Planning & Initial Layout
001	07.18.2024	Added Runner/Pill/SL CWT
002	----	----
003	----	----
004	----	----
005	----	----
006	----	----
007	----	----
008	----	----
009	----	----
010	----	----

SHEET: 005 OF 010





**6-Parts
Use Winch 1**

PROJECT: LR1400/2 SLDB 77m (253')
 LOCATION: -----
 BUCKNER CONTACT: Andy Moore, P.E. AndyM@BucknerHeavyLift.com
 LIFT PLAN BY: Andy Moore, P.E. AndyM@BucknerHeavyLift.com

DRAWING NOTES:
Main Reeving

LR1400/2	
Operating Mode	SLDB
Main Boom Length	77m (253')
Luffing Jib Length	N/A
Derrick Length	28m (92')
Superstructure CWT	135t (298k)
Carbody CWT	43t (95k)
Ballast Tray CWT	191t (422k)

PRELIMINARY

FILE: D:\Andy Moore\OneDrive - Buckner Heavylift Cranes\Documents - Engineering\Drawings\BHL\Buckner\Build Sheets\LR 1400\LR 1400 - SLDB 77m (253') - CR4416.dwg

CREATED: 07.19.2024 @ 9:20:08 AM
 EDITING TIME: 42h42m FILE SIZE: 4372.11Kb
 PAPER SIZE: ANSI full bleed B (11.00 x 17.00)
 SAVED: 07.19.2024 @ 10:15:45 AM
 PLOTTED: 07.19.2024 @ 10:07:54 AM

Revisions

All Sheets Same Revision Level

Rev.	Date	Description
000	07.03.2024	Preliminary Planning & Initial Layout
001	07.18.2024	Added Runner/Pull/SL CWT
002	----	----
003	----	----
004	----	----
005	----	----
006	----	----
007	----	----
008	----	----
009	----	----
010	----	----

Für die USA gelten bei folgenden Einsicherungen Eingeschränkte Traglasten.
 3-fach bis 36t
 4-fach bis 48t

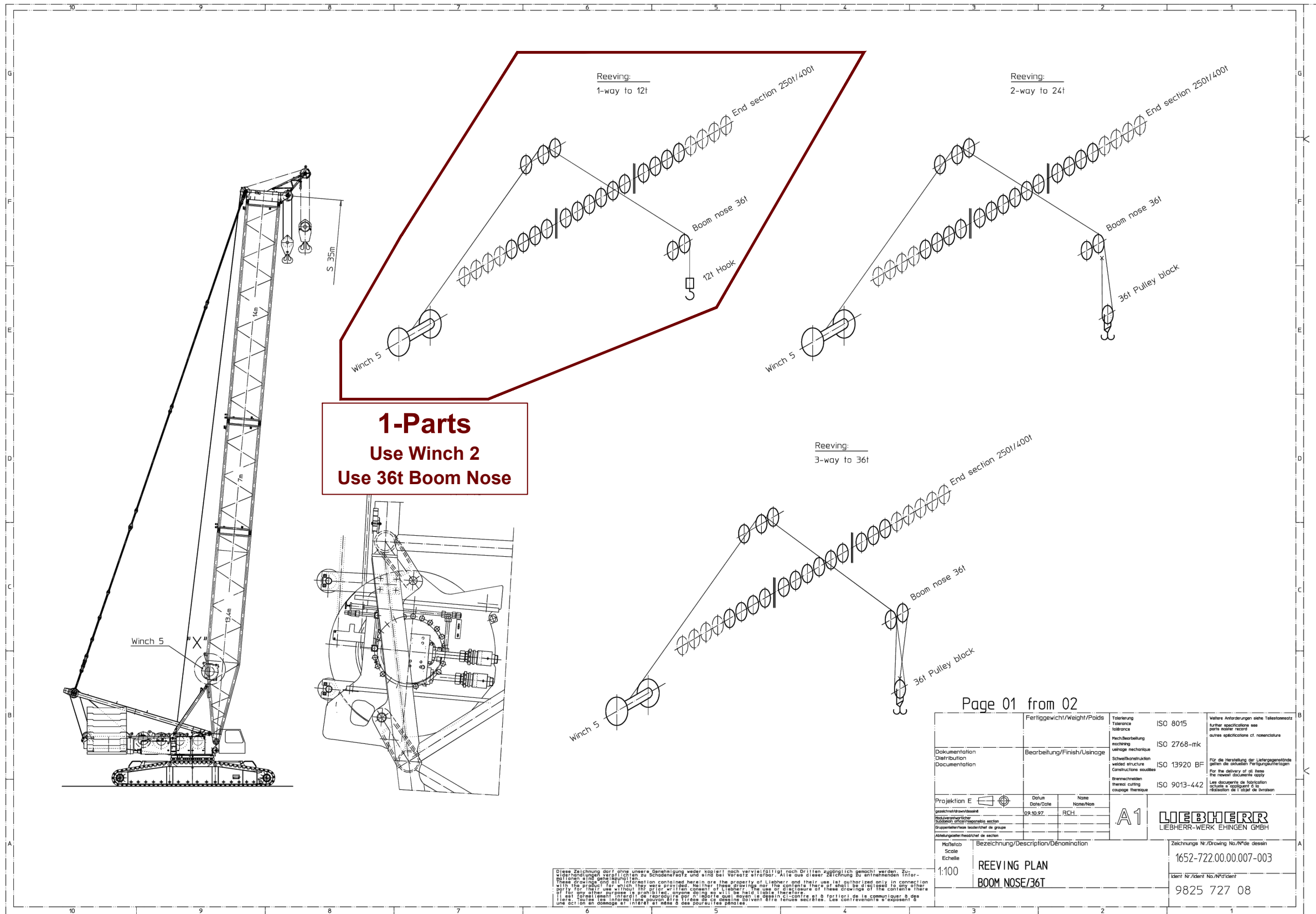
Original Blatt 01 von 06

Nicht Frei

Projektname: LR1400/2
 Zeichnung/Plan/Detail: 15.04.2024
 Status: SAR
 Maßstab: 1:100
 Datum: 21-Jan-2023 @ 10:00 SAR
 1652-722.00.00.005-004
 9825 634 08

SHEET: 006 OF 010





PROJECT: LR1400/2 SLDB 77m (253')

LOCATION: -----

BUCKNER CONTACT: Andy Moore, P.E.
AndyM@BucknerHeavyLift.com

LIFT PLAN BY: Andy Moore, P.E.
AndyM@BucknerHeavyLift.com

DRAWING NOTES:
Aux Reeving

LR1400/2	
Operating Mode	SLDB
Main Boom Length	77m (253')
Luffing Jib Length	N/A
Derrick Length	28m (92')
Superstructure CWT	135t (298k)
Carbody CWT	43t (95k)
Ballast Tray CWT	191t (422k)

PRELIMINARY

FILE: D:\Andy Moore\OneDrive - Buckner HeavyLift Cranes\Documents - Engineering\Drawings\BHL\Buckner\Build Sheets\LR 1400\LR 1400 - SLBD 77m (253') - CR4416.dwg

CREATED: 07.19.2024 @ 9:20:08 AM
 EDITING TIME: 42h42m FILE SIZE: 4372.11Kb
 PAPER SIZE: ANSI full bleed B (11.00 x 17.00)
 SAVED: 07.19.2024 @ 9:00:15 AM
 PLOTTED: 07.19.2024 @ 10:07:54 AM

Revisions		
All Sheets Same Revision Level		
Rev.	Date	Description
000	07.03.2024	Preliminary Planning & Initial Layout
001	07.18.2024	Added Runner/Pill/SL CWT
002	----	----
003	----	----
004	----	----
005	----	----
006	----	----
007	----	----
008	----	----
009	----	----
010	----	----

SHEET: 007 OF 010

BUCKNER HEAVYLIFT CRANES

PROJECT:
LR1400/2 SLDB 77m (253')

LOCATION: -----
BUCKNER CONTACT: Andy Moore, P.E.
AndyM@BucknerHeavyLift.com
LIFT PLAN BY: Andy Moore, P.E.
AndyM@BucknerHeavyLift.com

DRAWING NOTES:
Derrick Reeving

LR1400/2	
Operating Mode	SLDB
Main Boom Length	77m (253')
Luffing Jib Length	N/A
Derrick Length	28m (92')
Superstructure CWT	135t (298k)
Carbody CWT	43t (95k)
Ballast Tray CWT	191t (422k)

PRELIMINARY

FILE: D:\Andy Moore\OneDrive - Buckner HeavyLift Cranes\Documents - Engineering\Drawings\BHL\Buckner\Build Sheets\LR 1400\LR 1400 - SLDB 77m (253') - CR4416.dwg

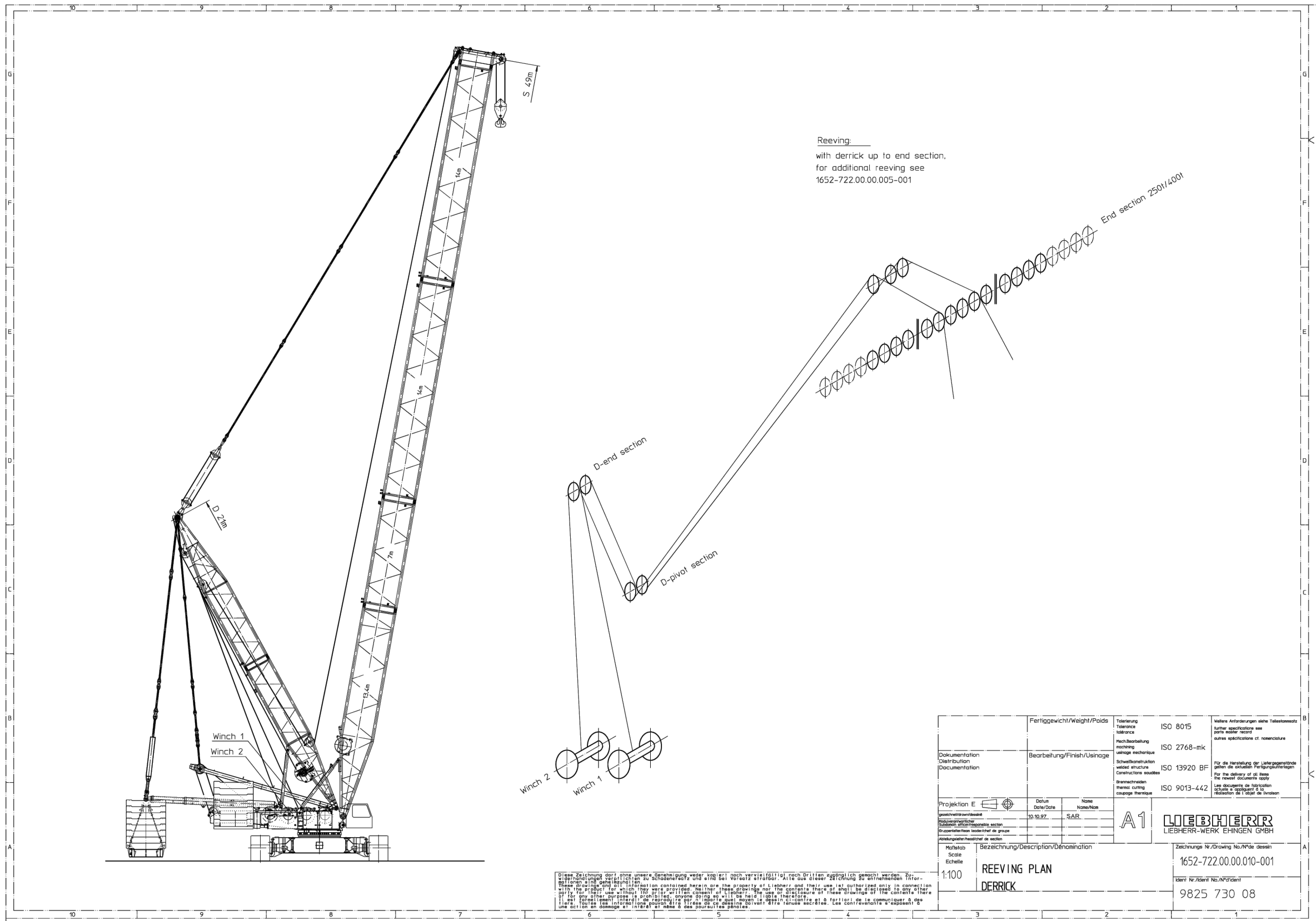
CREATED: 07.19.2024 @ 9:20:08 AM
 EDITING TIME: 42h42m FILE SIZE: 4372.11Kb
 PAPER SIZE: ANSI full bleed B (11.00 x 17.00)
 SAVED: 07.19.2024 @ 10:15:45 AM
 PLOTTED: 07.19.2024 @ 10:07:52 AM

Revisions

All Sheets Same Revision Level

Rev.	Date	Description
000	07.03.2024	Preliminary Planning & Initial Layout
001	07.18.2024	Added Runner/Pill/SL CWT
002	----	----
003	----	----
004	----	----
005	----	----
006	----	----
007	----	----
008	----	----
009	----	----
010	----	----

SHEET: 008 OF 010



NOTE:

Crane will be boomed up and down in SLD configuration. See erection charts.

RAISING - AND LOWERING CHARTS

SLD - mode
with 350 t head section

TAB: 12400069
System: S 2620.20
L 2620.10
D 2115.20

Note: raising, lowering 360°
Supporting base 7,80 m x 7,50 m x 1,20 m **without** additional supports
Derrick boom D = 28 m; R = 9 m
R = 11 m

Operating mode	Slewing platform- / central ballast [t] / [t]	Boom combination SL (m)	max. permissible hook block weight on main boom	
			[t]	[t]
SLD	155 / 43	28 - 70 77	8,0 6,5	
	135 / 43	28 - 63 70 77	8,0 7,6 4,6	

Explanation of chart :

DWG Slewing gear

HA Main boom length

HI Luffing boom length

WHA Angle data: Main boom to the horizontal

CAUTION: The angle position can be outside the load carrying capacity charts.

WHI Angle data: Luffing boom (also WV) to the horizontal, for fixed jib : Intermediate angle

CAUTION: The angle position can be outside the load carrying capacity charts.

RAD Radius of hook block to center of slewing ring

HKFL Max. hook block weight

OWB Slewing platform ballast

ZBL Central ballast

DB Derrick ballast

DRAD Radius to derrick ballast

VWAB Max. permissible wind speed at 360° wind direction and fixed slewing brakes.

VWABF Max. possible wind speed for turning against side wind.

VWRST Permissible wind speed for take down procedure

MAX. PERMISSIBLE WIND SPEEDS (S- BOOM SYSTEM)

SLD- Operation (with 350 t head)

2 Slewing gears
Version 1.0; 7/99

HA (m)	HI (m)	WHA (°)	WHI (°)	RAD (m)	HKFL (t)	OWB (t)	ZBL (t)	DB (t)	DRAD (m)	VWAB (m/s)	VWABF (m/s)	VWRST (m/s)
28	-	47	-	21.8	8.0	135	43	-	-	30.0	30.0	14.3
35	-	53	-	24.0	8.0	135	43	-	-	30.0	30.0	14.3
42	-	57	-	25.9	8.0	135	43	-	-	30.0	28.3	14.3
49	-	61	-	27.0	8.0	135	43	-	-	30.0	24.9	14.3
56	-	64	-	27.9	8.0	135	43	-	-	30.0	22.3	12.8
63	-	66	-	29.2	8.0	135	43	-	-	28.4	20.2	12.8
70	-	68	-	29.9	8.0	135	43	-	-	27.0	18.4	12.8
77	-	69	-	31.4	8.0	135	43	-	-	25.4	16.9	11.1
84	-	71	-	31.3	8.0	135	43	-	-	24.6	15.6	11.1
91	-	72	-	32.2	8.0	135	43	-	-	23.5	14.6	11.1
98	-	73	-	32.9	8.0	135	43	-	-	22.5	13.6	9.0
105	-	74	-	33.3	8.0	135	43	-	-	21.8	12.8	9.0
112	-	75	-	33.5	8.0	135	43	-	-	21.3	12.0	9.0

PROJECT:

LR1400/2 SLDB 77m (253')

LOCATION: -----
BUCKNER CONTACT: Andy Moore, P.E.
AndyM@BucknerHeavyLift.com
LIFT PLAN BY: Andy Moore, P.E.
AndyM@BucknerHeavyLift.com

DRAWING NOTES:
Erection & Take Down

LR1400/2	
Operating Mode	SLDB
Main Boom Length	77m (253')
Luffing Jib Length	N/A
Derrick Length	28m (92')
Superstructure CWT	135t (298k)
Carbody CWT	43t (95k)
Ballast Tray CWT	191t (422k)

PRELIMINARY

FILE: D:\Andy Moore\OneDrive - Buckner HeavyLift Cranes\Documents - Engineering\Drawings\BHL\Buckner\Build Sheets\LR 1400\LR 1400 - SLDB 77m (253') - CR4416.dwg

CREATED: 07.19.2024 @ 9:20:08 AM
EDITING TIME: 42h42m FILE SIZE: 4372.11Kb
PAPER SIZE: ANSI full bleed B (11.00 x 17.00) INCHES
SAVED: 07.19.2024 @ 09:15:45 AM
PLOTTED: 07.19.2024 @ 10:07:55 AM

Revisions

All Sheets Same Revision Level

Rev.	Date	Description
000	07.03.2024	Preliminary Planning & Initial Layout
001	07.18.2024	Added Runner/Pill/SL CWT
002	----	----
003	----	----
004	----	----
005	----	----
006	----	----
007	----	----
008	----	----
009	----	----
010	----	----

SHEET: 009 OF 010



ISO DIN

SLDB	--
253/92ft	

074265

06.10

			ft > < lbs	CODE > 1237 < L124 6800 .x(x)																	
	ft	253	253	253																	
38	404,000	404,000	404,000																		
40	404,000	404,000	404,000																		
45	404,000	404,000	404,000																		
50	404,000	404,000	404,000																		
55	401,000	401,000	401,000																		
60	395,000	396,000	396,000																		
65	384,000	388,000	388,000																		
70	371,000	378,000	378,000																		
75	357,000	367,000	367,000																		
80	342,000	357,000	357,000																		
85	320,000	347,000	347,000																		
90	298,000	335,000	338,000																		
95	278,000	317,000	328,000																		
100	262,000	297,000	318,000																		
105	251,000	279,000	308,000																		
110	241,000	265,000	299,000																		
115	230,000	253,000	288,000																		
120	218,000	243,000	276,000																		
125	207,000	233,000	264,000																		
130	196,000	225,000	254,000																		
135	188,000	216,000	244,000																		
140	179,000	206,000	235,000																		
150	163,000	190,000	219,000																		
160	150,000	175,000	203,000																		
170	140,000	162,000	188,000																		
180	129,000	150,000	175,000																		
190	120,000	140,000	162,000																		
200	112,000	132,000	150,000																		
210	104,000	123,000	141,000																		
220	97,000	117,000	132,000																		
	ft /s	36	36	36																	
***		006	007	008																	

	SLDB	--		298,000	95,000		yy
	253/92ft		lbs	lbs			

II - 242

PROJECT:
 LR1400/2 SLDB 77m (253')

LOCATION: -----

BUCKNER CONTACT: Andy Moore, P.E.
 AndyM@BucknerHeavyLift.com

LIFT PLAN BY: Andy Moore, P.E.
 AndyM@BucknerHeavyLift.com

DRAWING NOTES:
Load Charts

LR1400/2	
Operating Mode	SLDB
Main Boom Length	77m (253')
Luffing Jib Length	N/A
Derrick Length	28m (92')
Superstructure CWT	135t (298k)
Carbody CWT	43t (95k)
Ballast Tray CWT	191t (422k)

PRELIMINARY

FILE: D:\Andy Moore\OneDrive - Buckner Heavylift Cranes\Documents - Engineering\Drawings\BHL\Buckner\Build Sheets\LR 1400\LR 1400 - SLBD 77m (253') - CR4416.dwg

CREATED: 07.19.2024 @ 9:20:08 AM

EDITING TIME: 42h42m | FILE SIZE: 4372.11Kb

PAPER SIZE: ANSI full bleed B (11.00 x 17.00) | PLOT SIZE: 11.00 x 17.00

SAVED: 07.19.2024 @ 9:00:15 AM

PLOTTED: 07.19.2024 @ 10:07:58 AM

Revisions

All Sheets Same Revision Level

Rev.	Date	Description
000	07.03.2024	Preliminary Planning & Initial Layout
001	07.18.2024	Added Runner/Pill/SL CWT
002	----	----
003	----	----
004	----	----
005	----	----
006	----	----
007	----	----
008	----	----
009	----	----
010	----	----

SHEET: 010 OF 010

